

## Pan Methylated Lysine (Mix) Mouse mAb

CatalogNo: YM3429

### Key Features

#### Host Species

- Mouse

#### Reactivity

- Species independent

#### Applications

- WB,IHC,IF

### Storage

**Storage\*** -15°C to -25°C/1 year(Do not lower than -25°C)

**Formulation** PBS, pH 7.4, containing 0.5%BSA, 0.02% sodium azide as Preservative and 50% Glycerol.

### Recommended Dilution Ratios

**WB 1:1000-2000**

**IHC 1:200-500**

**IF 1:50-200**

### Basic Information

**Clonality** Monoclonal

**Clone Number** 14F1

### Immunogen Information

**Immunogen** Conjugated Protein

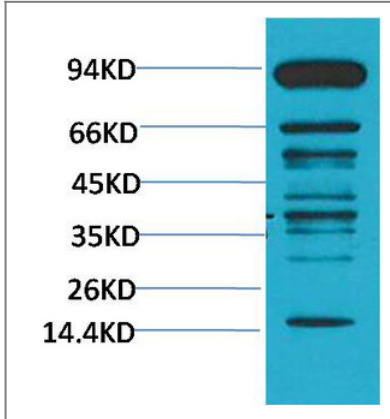
**Specificity** The antibody detects endogenous Pan Methylated Lysine protein.

### Target Information

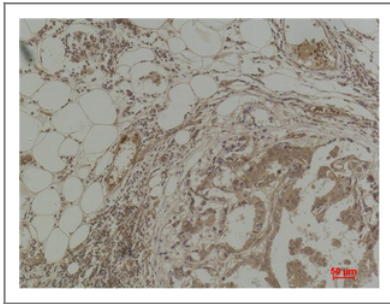
**Protein Name**

---

## Validation Data



Western blot analysis of Hela using Pan Methylated Lysine Monoclonal Antibody.



Immunohistochemical analysis of paraffin-embedded Human Breast Carcinoma using Pan Methylated Lysine Monoclonal Antibody.

## Contact information

Orders: [order.cn@immunoway.com](mailto:order.cn@immunoway.com)  
Support: [support.cn@immunoway.com](mailto:support.cn@immunoway.com)  
Telephone: 400-8787-807(China)  
Website: <http://www.immunoway.com.cn>  
Address: 2200 Ringwood Ave San Jose, CA 95131 USA



Please scan the QR code to access additional product information:  
**Pan Methylated Lysine (Mix) Mouse mAb**

---

For Research Use Only. Not for Use in Diagnostic Procedures.

[Antibody](#) | [ELISA Kits](#) | [Protein](#) | [Reagents](#)