

## CREB1 (PTR2317) Mouse mAb

CatalogNo: YM3428 **KD/KO Validated** 

### Key Features

#### Host Species

- Mouse

#### Reactivity

- Human, Mouse, Rat

#### Applications

- WB, IF, ELISA

#### MW

- 36kD (Calculated)  
45kD (Observed)

#### Isotype

- IgG1, Kappa

### Storage

**Storage\*** -15°C to -25°C/1 year (Do not lower than -25°C)

**Formulation** PBS, 50% glycerol, 0.05% Proclin 300, 0.05% BSA

### Recommended Dilution Ratios

**WB 1:500-2000**

**IF 1:100-500**

**ELISA 1:1000-5000**

### Basic Information

**Clonality** Monoclonal

**Clone Number** PTR2317

### Immunogen Information

**Immunogen** Recombinant Protein of human CREB-1 AA range: 100-200

**Specificity** This antibody detects endogenous levels of CREB1 protein.

## Target Information

**Gene name** CREB1

**Protein Name** Cyclic AMP-responsive element-binding protein 1

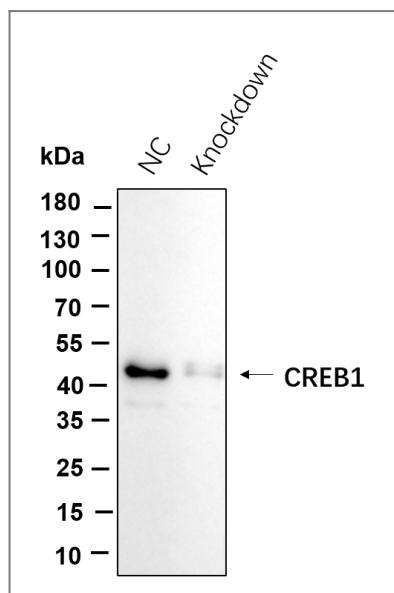
Organism	Gene ID	UniProt ID
Human	<a href="#">1385</a> ;	<a href="#">P16220</a> ;
Mouse		<a href="#">Q01147</a> ;

**Tissue specificity** Eye,Placenta,Spleen,Testis,

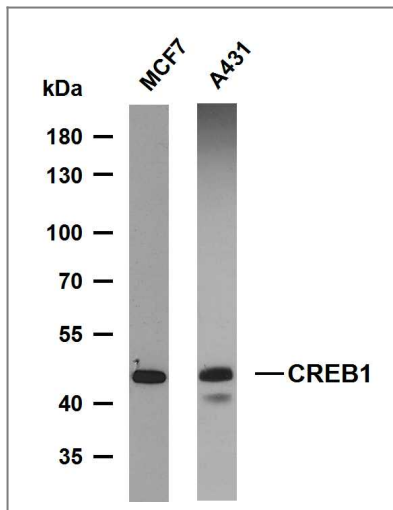
### Function

Disease:A chromosomal aberration involving CREB1 is associated with angiomatoid fibrous histiocytoma (AFH) [MIM:612160]. Translocation t(2;22)(q33;q12) with CREB1 generates a EWSR1/CREB1 fusion gene that is most common genetic abnormality in this tumor type.,Function:This protein binds the cAMP response element (CRE), a sequence present in many viral and cellular promoters. CREB stimulates transcription on binding to the CRE. Transcription activation is enhanced by the TORC coactivators which act independently of Ser-133 phosphorylation. Implicated in synchronization of circadian rhythmicity.,PTM:Stimulated by phosphorylation. Phosphorylation of both Ser-133 and Ser-142 in the SCN regulates the activity of CREB and participates in circadian rhythm generation. Phosphorylation of Ser-133 allows CREBBP binding (By similarity). Phosphorylated upon DNA damage, probably by ATM or ATR.,similarity:Belongs to the bZIP family.,similarity:Contains 1 bZIP domain.,similarity:Contains 1 KID (kinase-inducible) domain.,subunit:Interacts with PPRC1. Binds DNA as a dimer. This dimer is stabilized by magnesium ions. Interacts, through the bZIP domain, with the coactivators TORC1/CRTC1, TORC2/CRTC2 and TORC3/CRTC3. When phosphorylated on Ser-133, binds CREBBP.,

## Validation Data



Western blot analysis of lysates from HeLa WT and shRNA treated



Various whole cell lysates were separated by 10% SDS-PAGE, and the membrane was blotted with anti-CREB1(PTR2317) antibody. The HRP-conjugated Goat anti-Mouse IgG(H + L) antibody was used to detect the antibody. Lane 1: MCF7 Lane 2: A431

## Contact information

Orders: [order.cn@immunoway.com](mailto:order.cn@immunoway.com)  
 Support: [support.cn@immunoway.com](mailto:support.cn@immunoway.com)  
 Telephone: 400-8787-807(China)  
 Website: <http://www.immunoway.com.cn>  
 Address: 2200 Ringwood Ave San Jose, CA 95131 USA



Please scan the QR code to access additional product information:  
**CREB1 (PTR2317)**  
**Mouse mAb**

For Research Use Only. Not for Use in Diagnostic Procedures.

[Antibody](#) | [ELISA Kits](#) | [Protein](#) | [Reagents](#)