

## TGF $\beta$ (1F12) Mouse mAb

CatalogNo: YM33051

### Key Features

#### Host Species

- Mouse

#### Reactivity

- Human, Mouse, Rat

#### Applications

- IHC, WB

#### MW

- 52kD (Observed)

### Storage

**Storage\*** -15°C to -25°C/1 year (Do not lower than -25°C)

**Formulation** Liquid in PBS containing 50% glycerol, 0.5% BSA and 0.02% sodium azide.

### Recommended Dilution Ratios

IHC 1:50-200

WB 1:1000-2000

### Basic Information

**Clonality** Monoclonal

**Clone Number** 1F12

### Immunogen Information

**Immunogen** Synthesized peptide derived from human TGF  $\beta$ 1 Polyclonal

**Specificity** This antibody detects endogenous levels of TGF  $\beta$  at Human, Mouse, Rat

### Target Information

**Gene name** TGFB1 TGFB

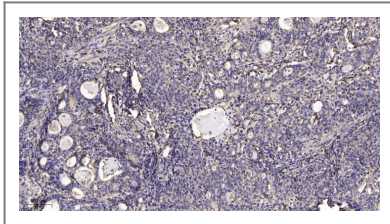
**Protein Name** Transforming growth factor beta-1, TGF- $\beta$ 1, TGF b

Organism	Gene ID	UniProt ID
Human	<a href="#">7040</a> ;	<a href="#">P01137</a> ;
Mouse	<a href="#">21803</a> ;	<a href="#">P04202</a> ;
Rat	<a href="#">59086</a> ;	<a href="#">P17246</a> ;

**Cellular Localization** [Latency-associated peptide]: Secreted, extracellular space, extracellular matrix . ;  
[Transforming growth factor beta-1]: Secreted .

**Tissue specificity** Highly expressed in bone (PubMed:11746498, PubMed:17827158). Abundantly expressed in articular cartilage and chondrocytes and is increased in osteoarthritis (OA) (PubMed:11746498, PubMed:17827158). Colocalizes with ASPN in chondrocytes within OA lesions of articular cartilage (PubMed:17827158).

## Validation Data



Immunohistochemical analysis of paraffin-embedded human Gastric adenocarcinoma. 1, Antibody was diluted at 1:200(4° overnight). 2, Tris-EDTA,pH9.0 was used for antigen retrieval. 3,Secondary antibody was diluted at 1:200(room temperature, 45min).

## Contact information

Orders: [order.cn@immunoway.com](mailto:order.cn@immunoway.com)  
Support: [support.cn@immunoway.com](mailto:support.cn@immunoway.com)  
Telephone: 400-8787-807(China)  
Website: <http://www.immunoway.com.cn>  
Address: 2200 Ringwood Ave San Jose, CA 95131 USA



Please scan the QR code to access additional product information:  
**TGF  $\beta$  (1F12) Mouse mAb**

For Research Use Only. Not for Use in Diagnostic Procedures.

[Antibody](#) | [ELISA Kits](#) | [Protein](#) | [Reagents](#)