

Flotillin-1 (6C10) Mouse mAb

CatalogNo: YM3157

Key Features

Host Species

- Mouse

Reactivity

- Human, Mouse, Rat,

Applications

- WB

MW

- 49kD (Observed)

Recommended Dilution Ratios

WB 1:1000-2000

Storage

Storage*

-15°C to -25°C/1 year(Do not lower than -25°C)

Formulation

PBS, pH 7.4, containing 0.5%BSA, 0.02% sodium azide as Preservative and 50% Glycerol.

Basic Information

Clonality

Monoclonal

Clone Number

6C10

Immunogen Information

Immunogen

Synthetic Peptide of Flotillin-1

Specificity

The antibody detects endogenous Flotillin-1 protein.

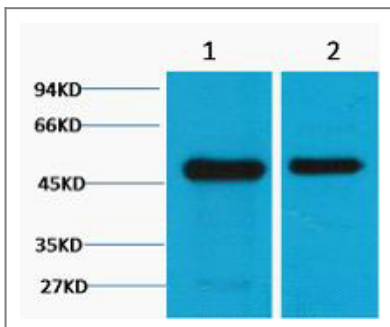
Target Information

Gene name

FLOT1

Protein Name	Flotillin-1		
	Organism	Gene ID	UniProt ID
	Human	10211 ;	O75955 ;
Cellular Localization	Cell membrane; Peripheral membrane protein . Endosome . Membrane, caveola ; Peripheral membrane protein . Melanosome . Membrane raft . Identified by mass spectrometry in melanosome fractions from stage I to stage IV (PubMed:17081065). Membrane-associated protein of caveola (By similarity). .		
Tissue specificity	Adipose tissue,Adrenal gland,Lung,Peripheral blood leukocyte,Umbilical cord blood,		
Function	Function:May act as a scaffolding protein within caveolar membranes, functionally participating in formation of caveolae or caveolae-like vesicles.,similarity:Belongs to the band 7/mec-2 family. Flotillin subfamily.,subcellular location:Membrane-associated protein of caveolae. Identified by mass spectrometry in melanosome fractions from stage I to stage IV.,subunit:Heterooligomeric complex of flotillin-1 and flotillin-2 and caveolin-1 and caveolin-2.,		

Validation Data



Western blot analysis of 1) Mouse Brain Tissue, 2) Rat Brain tissue, diluted at 1:2000.

Contact information

Orders: order.cn@immunoway.com
 Support: support.cn@immunoway.com
 Telephone: 400-8787-807(China)
 Website: <http://www.immunoway.com.cn>
 Address: 2200 Ringwood Ave San Jose, CA 95131 USA



Please scan the QR code
 to access additional
 product information:
Flotillin-1 (6C10)
Mouse mAb