

β II tubulin (Mix) Mouse mAb

CatalogNo: YM3151

Comparable Abs



Key Features

Host Species

- Mouse

Reactivity

- Human, Mouse, Rat,

Applications

- WB, IHC, IF, IP

MW

- 50kD (Observed)

Recommended Dilution Ratios

WB 1:50000-100000

IP 1:200

IHC 1:50-300

IF 1:50-200

Storage

Storage* -15°C to -25°C/1 year(Do not lower than -25°C)**Formulation** PBS, pH 7.4, containing 0.5%BSA, 0.02% sodium azide as Preservative and 50% Glycerol.

Basic Information

Clonality Monoclonal

Immunogen Information

Immunogen Synthetic Peptide of β II tubulin**Specificity** The antibody detects endogenous β II tubulin protein.

Target Information

Gene name TUBB2A

Protein Name Tubulin beta-2A chain

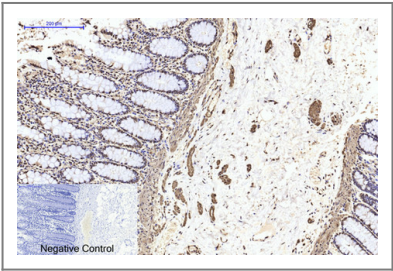
Organism	Gene ID	UniProt ID
Human	7280 ;	Q13885 ;
Mouse	22151 ;	Q7TMM9 ;
Rat	498736 ;	P85108 ;

Cellular Localization Cytoplasm, cytoskeleton .

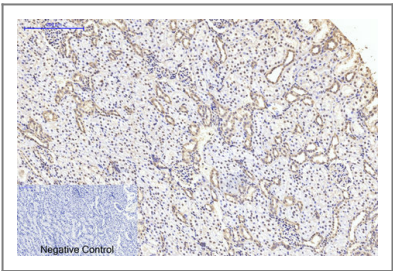
Tissue specificity High expression in brain, where it represents 30% of all beta-tubulins.

Function Function:Tubulin is the major constituent of microtubules. It binds two moles of GTP, one at an exchangeable site on the beta chain and one at a non-exchangeable site on the alpha-chain.,similarity:Belongs to the tubulin family.,subunit:Dimer of alpha and beta chains.,

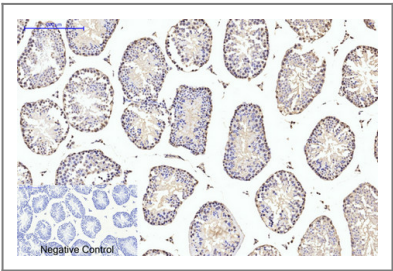
Validation Data



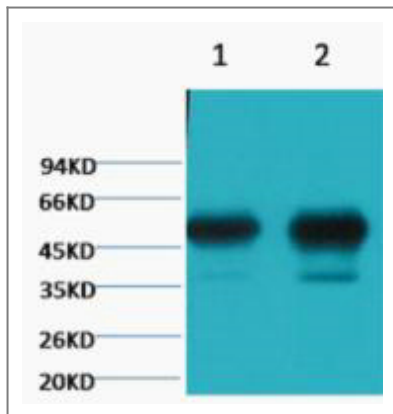
Immunohistochemical analysis of paraffin-embedded Human-colon tissue. 1, β II tubulin Monoclonal Antibody(Mix) was diluted at 1:200(4°C,overnight). 2, Sodium citrate pH 6.0 was used for antibody retrieval(>98°C,20min). 3,Secondary antibody was diluted at 1:200(room tempeRature, 30min). Negative control was used by secondary antibody only.



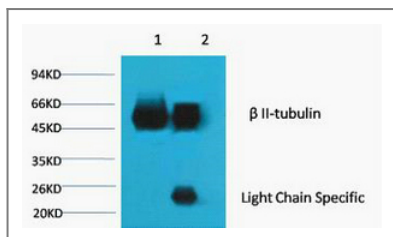
Immunohistochemical analysis of paraffin-embedded Rat-kidney tissue. 1, β II tubulin Monoclonal Antibody(Mix) was diluted at 1:200(4°C,overnight). 2, Sodium citrate pH 6.0 was used for antibody retrieval(>98°C,20min). 3,Secondary antibody was diluted at 1:200(room tempeRature, 30min). Negative control was used by secondary antibody only.



Immunohistochemical analysis of paraffin-embedded Mouse-testis tissue. 1, β II tubulin Monoclonal Antibody(Mix) was diluted at 1:200(4°C,overnight). 2, Sodium citrate pH 6.0 was used for antibody retrieval(>98°C,20min). 3,Secondary antibody was diluted at 1:200(room tempeRature, 30min). Negative control was used by secondary antibody only.



Western blot analysis of 1) Mouse Brain tissue, 2) Rat Brain tissue, diluted at 1:100000.



1) Input: Mouse Brain Tissue Lysate 2) IP product: IP dilute 1: 200 Western blot analysis: primary antibody : TDY191 1: 10000 Secondary antibody: Goat anti-Mouse IgG, Light chain specific (S003), 1: 5000

Contact information

Orders: order.cn@immunoway.com
 Support: support.cn@immunoway.com
 Telephone: 400-8787-807(China)
 Website: <http://www.immunoway.com.cn>
 Address: 2200 Ringwood Ave San Jose, CA 95131 USA



Please scan the QR code to access additional product information:
β II tubulin (Mix)
Mouse mAb

For Research Use Only. Not for Use in Diagnostic Procedures.

[Antibody](#) | [ELISA Kits](#) | [Protein](#) | [Reagents](#)