

GFP-Tag (Mix) Mouse mAb

CatalogNo: YM3124 **Orthogonal Validated** 

Comparable Abs 

Key Features

Host Species

- Mouse

Reactivity

- Species independent

Applications

- WB,IF,IP,CoIP

Storage

Storage* -15°C to -25°C/1 year(Do not lower than -25°C)

Formulation PBS, pH 7.4, containing 0.5%BSA, 0.02% sodium azide as Preservative and 50% Glycerol.

Recommended Dilution Ratios

WB 1:5000-10000

IP 1:200

IF 1:50-200

Basic Information

Clonality Monoclonal

Clone Number 19E11

Immunogen Information

Immunogen Recombinant Protein of GFP

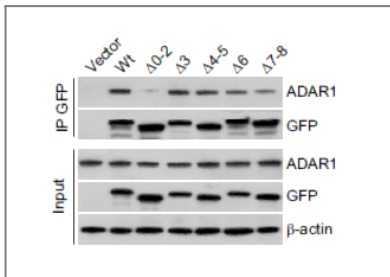
Specificity GFP antibody is reactive against all variants of Aequorea victoria GFP such as S65T-GFP, RS-GFP, YFP, CFP, RFP and EGFP.

Target Information

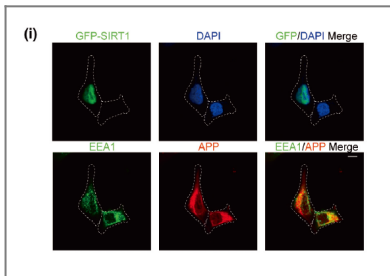
Gene name GFP-Tag

Protein Name GFP Tag

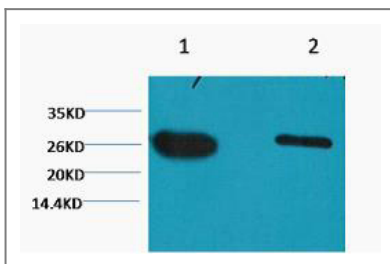
Validation Data



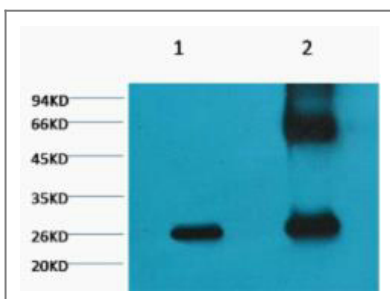
ADAR1 links R-loop homeostasis to ATR activation in replication stress response. NUCLEIC ACIDS RESEARCH Lei Shi WB,CoIP Human HeLa cell



Cooperative effects of SIRT1 and SIRT2 on APP acetylation. AGING CELL Liu Cao IF Human 1:1000 HEK293 cell



Western blot analysis of GFP transfected HeLa, diluted at 1) 1:5000 2) 1:10000



1) Input (control) 2) IP products, antibody dilution 1:200

Contact information

Orders: order.cn@immunoway.com
Support: support.cn@immunoway.com
Telephone: 400-8787-807(China)
Website: <http://www.immunoway.com.cn>
Address: 2200 Ringwood Ave San Jose, CA 95131 USA



Please scan the QR code
to access additional
product information:
GFP-Tag (Mix)
Mouse mAb

For Research Use Only. Not for Use in Diagnostic Procedures.

[Antibody](#) | [ELISA Kits](#) | [Protein](#) | [Reagents](#)