

## CDX2 (14H6) Mouse mAb

CatalogNo: YM3057

Orthogonal Validated 

### Key Features

#### Host Species

- Mouse

#### Reactivity

- Human, Mouse, Rat

#### Applications

- WB, IF, IHC

#### MW

- 42kD (Observed)

### Recommended Dilution Ratios

WB 1:1000

IHC 1:200

IF 1:200

### Storage

**Storage\*** -15°C to -25°C/1 year(Do not lower than -25°C)**Formulation** PBS, pH 7.4, containing 0.5%BSA, 0.02% sodium azide as Preservative and 50% Glycerol.

### Basic Information

**Clonality** Monoclonal**Clone Number** 14H6

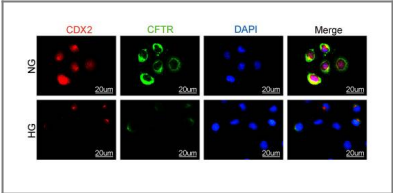
### Immunogen Information

**Immunogen** Synthetic Peptide of CDX2**Specificity** The antibody detects endogenous CDX2 proteins.

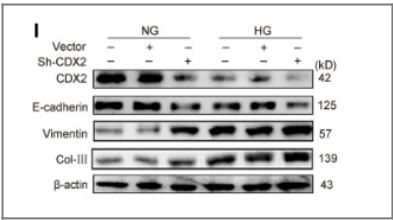
# Target Information

Gene name	CDX2		
Protein Name	Homeobox protein CDX-2		
	Organism	Gene ID	UniProt ID
	Human	<a href="#">1045</a> ;	<a href="#">Q99626</a> ;
	Mouse	<a href="#">12591</a> ;	<a href="#">P43241</a> ;
Cellular Localization	Nucleus .		
Tissue specificity	Detected in small intestine, colon and pancreas.		
Function	Function:Involved in the transcriptional regulation of multiple genes expressed in the intestinal epithelium. Important in broad range of functions from early differentiation to maintenance of the intestinal epithelial lining of both the small and large intestine.,PTM:Phosphorylation of Ser-60 mediates the transactivation capacity.,similarity:Belongs to the Caudal homeobox family.,similarity:Contains 1 homeobox DNA-binding domain.,		

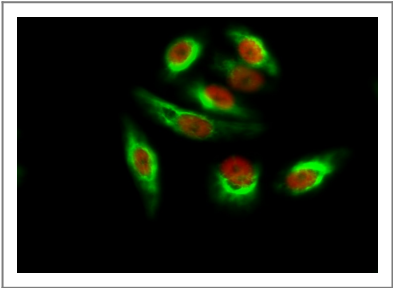
# Validation Data



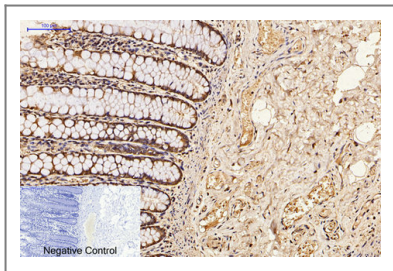
Liu, Huiming, et al. "The role of CDX2 in renal tubular lesions during diabetic kidney disease." Aging (Albany NY) 13.5 (2021): 6782.



Liu, Huiming, et al. "The role of CDX2 in renal tubular lesions during diabetic kidney disease." Aging (Albany NY) 13.5 (2021): 6782.



Immunofluorescence analysis of Hela cell. 1,Amyloid-β Polyclonal Antibody(green) was diluted at 1:200(4° overnight). (red) was diluted at 1:200(4° overnight). 2, Goat Anti Rabbit Alexa Fluor 488 Catalog:RS3211 was diluted at 1:1000(room temperature, 50min). Goat Anti Mouse Alexa Fluor 594 Catalog:RS3608 was diluted at 1:1000(room temperature, 50min).



Immunohistochemical analysis of paraffin-embedded Human-colon tissue.  
1,CDX2 Monoclonal Antibody(14H6) was diluted at 1:200(4°C,overnight). 2,  
Sodium citrate pH 6.0 was used for antibody retrieval(>98°C,20min).  
3,Secondary antibody was diluted at 1:200(room tempeRature, 30min).  
Negative control was used by secondary antibody only.

## | Contact information

Orders: [order.cn@immunoway.com](mailto:order.cn@immunoway.com)  
Support: [support.cn@immunoway.com](mailto:support.cn@immunoway.com)  
Telephone: 400-8787-807(China)  
Website: <http://www.immunoway.com.cn>  
Address: 2200 Ringwood Ave San Jose, CA 95131 USA



Please scan the QR code  
to access additional  
product information:  
**CDX2 (14H6) Mouse  
mAb**

For Research Use Only. Not for Use in Diagnostic Procedures.

[Antibody](#) | [ELISA Kits](#) | [Protein](#) | [Reagents](#)