

## α Tubulin (PT2182) Mouse mAb-Loading Control

CatalogNo: YM3035

Orthogonal Validated Comparable Abs 

### Key Features

#### Host Species

- Mouse

#### Reactivity

- Human, Mouse, Rat

#### Applications

- IHC, WB, IF, ELISA

#### MW

- 52kD (Calculated)
- 52kD (Observed)

#### Isotype

- IgG2b, Kappa

### Storage

**Storage\*** -15°C to -25°C/1 year (Do not lower than -25°C)

**Formulation** PBS, 50% glycerol, 0.05% Proclin 300, 0.05% BSA

### Recommended Dilution Ratios

**IHC 1:200-1000**

**WB 1:1000-5000**

**IF 1:100-500**

**ELISA 1:5000-50000**

### Basic Information

**Clonality** Monoclonal

**Clone Number** PT2182

### Immunogen Information

**Immunogen** Recombinant Protein of Tubulin alpha-1A chain. AA range: 350-451

**Specificity** This antibody detects endogenous levels of Tubulin α protein.

---

## | Target Information

**Gene name** TUBA1A

**Protein Name** Tubulin alpha-1A chain

Organism	Gene ID	UniProt ID
Human	<a href="#">7846</a> ; <a href="#">10376</a> ;	<a href="#">Q71U36</a> ; <a href="#">P68363</a> ; <a href="#">Q9BQE3</a> ; <a href="#">P0DPH7</a> ; <a href="#">P0DPH8</a> ; <a href="#">Q6PEY2</a> ; <a href="#">P68366</a> ; <a href="#">Q9NY65</a> ;
Mouse	<a href="#">22142</a> ; <a href="#">22143</a> ;	
Rat	<a href="#">64158</a> ; <a href="#">500929</a> ;	<a href="#">P68370</a> ; <a href="#">Q6P9V9</a> ;

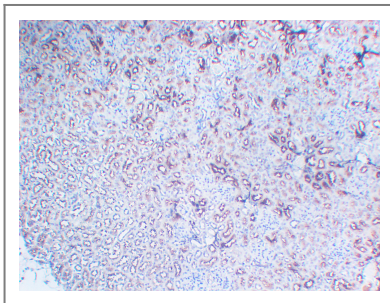
**Cellular Localization** Cytoplasmic

**Tissue specificity** Expressed at a high level in fetal brain.

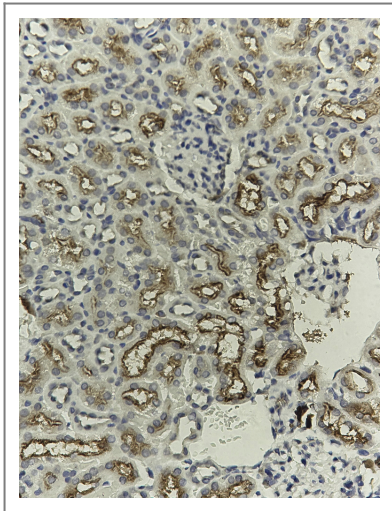
**Function** Disease:Defects in TUBA1A are the cause of lissencephaly type 3 (LIS3) [MIM:611603]. LIS is characterized by a smooth brain surface due to the absence (agyria) or reduction (pachygyria) of surface convolutions. It is often associated with psychomotor retardation and seizures. LIS3 features include agyria or pachygyria or laminar heterotopia, severe mental retardation, motor delay, variable presence of seizures, and abnormalities of corpus callosum, hippocampus, cerebellar vermis and brainstem.,Function:Tubulin is the major constituent of microtubules. It binds two moles of GTP, one at an exchangeable site on the beta chain and one at a non-exchangeable site on the alpha-chain.,PTM:Undergoes a tyrosination/detyrosination cycle, the cyclic removal and re-addition of a C-terminal tyrosine residue by the enzymes tubulin tyrosine carboxypeptidase (TTCP) and tubulin tyrosine ligase (TTL), respectively.,similarity:Belongs to the tubulin family.,subunit:Dimer of alpha and beta chains.,tissue specificity:Expressed at a high level in fetal brain.,

---

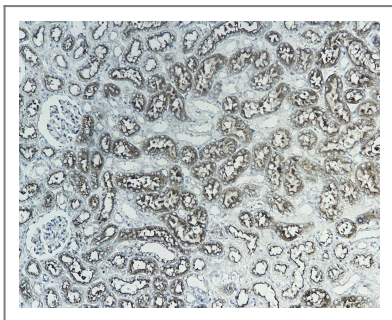
## | Validation Data



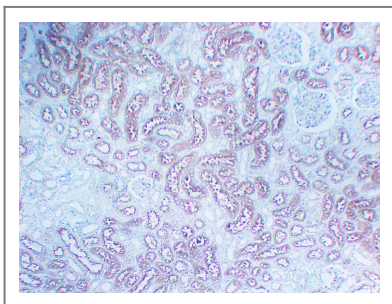
Mouse kidney tissue was stained with Anti-Tubulin  $\alpha$  (PT2182) Antibody



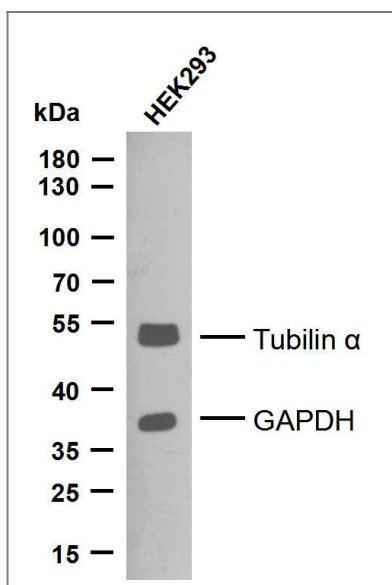
Mouse kidney tissue was stained with Anti-Tubulin  $\alpha$  (PT2182) Antibody



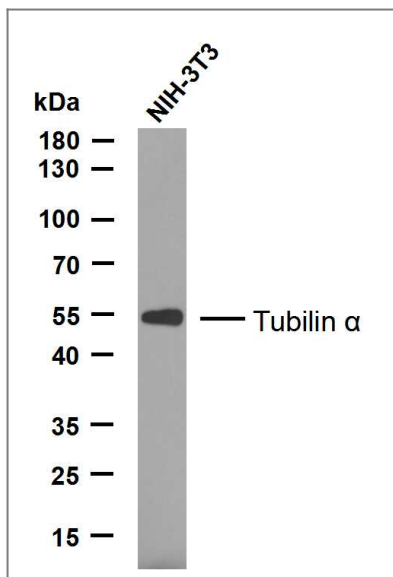
Rat kidney tissue was stained with Anti-Tubulin  $\alpha$  (PT2182) Antibody



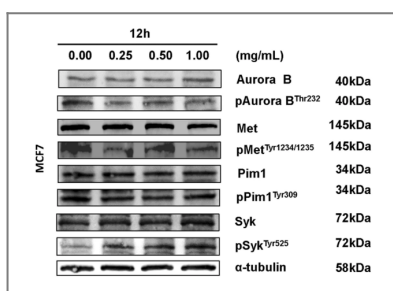
Rat kidney tissue was stained with Anti-Tubulin  $\alpha$  (PT2182) Antibody



Various whole cell lysates were separated by 10% SDS-PAGE, and the membrane was blotted with anti-Tubulin  $\alpha$  (YM3035) and anti-GAPDH (YM3029) antibody. The HRP-conjugated anti-Mouse IgG antibody was used to detect the antibody.



Various whole cell lysates were separated by 10% SDS-PAGE, and the membrane was blotted with anti-Tubulin  $\alpha$  (YM3035) antibody. The HRP-conjugated anti-Mouse IgG antibody was used to detect the antibody.



Wang, T., Liang, L., Zhao, C. et al. Elucidating direct kinase targets of compound Danshen dropping pills employing archived data and prediction models. *Sci Rep* 11, 9541 (2021).

## Contact information

Orders: [order.cn@immunoway.com](mailto:order.cn@immunoway.com)  
 Support: [support.cn@immunoway.com](mailto:support.cn@immunoway.com)  
 Telephone: 400-8787-807(China)  
 Website: <http://www.immunoway.com.cn>  
 Address: 2200 Ringwood Ave San Jose, CA 95131 USA



Please scan the QR code to access additional product information:  
 **$\alpha$  Tubulin (PT2182)**  
**Mouse mAb-Loading Control**

For Research Use Only. Not for Use in Diagnostic Procedures.

[Antibody](#) | [ELISA Kits](#) | [Protein](#) | [Reagents](#)