

Bag-1 Mouse mAb

CatalogNo: YM1421

| Key Features

Host Species

- Mouse

Reactivity

- Human, Mouse(predicted:Rat,

Applications

- WB

MW

- 52,46, 33kD (Observed)

| Recommended Dilution Ratios

WB 1:1000

| Storage

Storage*

-15°C to -25°C/1 year(Do not lower than -25°C)

Formulation

Liquid in PBS containing 50% glycerol, 0.5% BSA and 0.02% sodium azide.

| Basic Information

Clonality

Monoclonal

| Immunogen Information

Immunogen

Purified recombinant human Bag1 protein fragments expressed in E.coli.

Specificity

Transfected

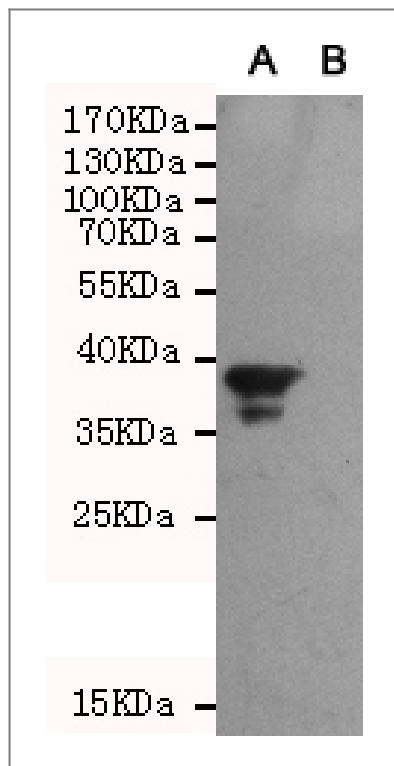
| Target Information

Gene name

BAG1

Protein Name	BAG family molecular chaperone regulator 1		
	Organism	Gene ID	UniProt ID
	Human	573 ;	Q99933 ;
	Mouse		Q60739 ;
Cellular Localization	[Isoform 1]: Nucleus. Cytoplasm. Isoform 1 localizes predominantly to the nucleus.; [Isoform 2]: Cytoplasm. Nucleus. Isoform 2 localizes to the cytoplasm and shuttles into the nucleus in response to heat shock.; [Isoform 4]: Cytoplasm. Nucleus. Isoform 4 localizes predominantly to the cytoplasm. The cellular background in which it is expressed can influence whether it resides primarily in the cytoplasm or is also found in the nucleus. In the presence of BCL2, localizes to intracellular membranes (what appears to be the nuclear envelope and perinuclear membranes) as well as punctate cytosolic structures suggestive of mitochondria.		
Tissue specificity	Isoform 4 is the most abundantly expressed isoform. It is ubiquitously expressed throughout most tissues, except the liver, colon, breast and uterine myometrium. Isoform 1 is expressed in the ovary and testis. Isoform 4 is expressed in several types of tumor cell lines, and at consistently high levels in leukemia and lymphoma cell lines. Isoform 1 is expressed in the prostate, breast and leukemia cell lines. Isoform 3 is the least abundant isoform in tumor cell lines (at protein level).		
Function	Disease:May be linked to the cryptophthalmos syndrome (Fraser syndrome), an autosomal recessive disorder characterized by the failure of eyes fissures to form during embryogenesis, webbed fingers, and atresia of ear canals, anus, vagina, alimentary tract, or larynx. All these developmental processes require cell death.,Function:Inhibits the chaperone activity of HSP70/HSC70 by promoting substrate release. Inhibits the pro-apoptotic function of PPP1R15A, and has anti-apoptotic activity. Markedly increases the anti-cell death function of BCL2 induced by various stimuli.,PTM:Ubiquitinated; mediated by SIAH1 or SIAH2 and leading to its subsequent proteasomal degradation.,similarity:Contains 1 BAG domain.,similarity:Contains 1 ubiquitin-like domain.,subcellular location:Isoform2 localizes to the cytoplasm and shuttles into the nucleus in response to heat shock.,subunit:Binds to the ATPase domain of HSP70/HSC chaperones. Binds to BCL2 and NR3C1. Interacts with N-terminal region of STK19. Interacts with PPP1R15A. Isoform 2 doesn't interact with HSP70/HSC or BCL2.,		

| Validation Data



Western blot analysis of extracts from CHO-K1 cells, transfected with a human pEGFP-C1-BAG1 construct (A) or transfected with a human pEGFP-C1 construct (B), using Bag1 mouse mAb (1:1000 diluted).

Contact information

Orders: order.cn@immunoway.com
 Support: support.cn@immunoway.com
 Telephone: 400-8787-807(China)
 Website: <http://www.immunoway.com.cn>
 Address: 2200 Ringwood Ave San Jose, CA 95131 USA



Please scan the QR code to access additional product information:
Bag-1 Mouse mAb

For Research Use Only. Not for Use in Diagnostic Procedures.

[Antibody](#) | [ELISA Kits](#) | [Protein](#) | [Reagents](#)