

CBR1 Mouse mAb

CatalogNo: YM1342

| Key Features

Host Species

- Mouse

Reactivity

- Human

Applications

- WB, ICC

MW

- 30kD (Observed)

| Recommended Dilution Ratios

WB 1:1000

ICC 1:100

| Storage

Storage*

-15°C to -25°C/1 year(Do not lower than -25°C)

Formulation

Liquid in PBS containing 50% glycerol, 0.5% BSA and 0.02% sodium azide.

| Basic Information

Clonality

Monoclonal

| Immunogen Information

Immunogen

Purified recombinant human CBR1 protein fragments expressed in E.coli

Specificity

This antibody detects endogenous levels of CBR1 and does not cross-react with related proteins.

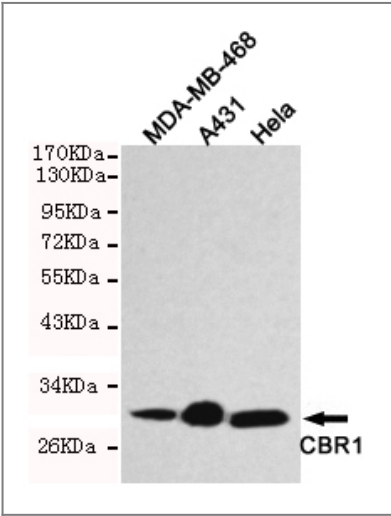
| Target Information

Gene name

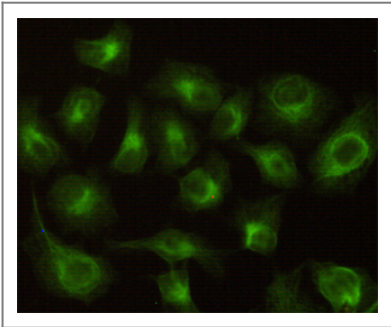
cbr1

Protein Name	Organism	Gene ID	UniProt ID
	Human	873;	P16152;
	Mouse		P48758;
Cellular Localization	Cytoplasm .		
Tissue specificity	Expressed in kidney (at protein level).		
Function	Catalytic activity:(13E)-(15S)-11-alpha,15-dihydroxy-9-oxoprost-13-enoate + NADP(+) = (13E)-11-alpha-hydroxy-9,15-dioxoprost-13-enoate + NADPH.,Catalytic activity:(5Z,13E)-(15S)-9-alpha,11-alpha,15-trihydroxyprosta-5,13-dienoate + NADP(+) = (5Z,13E)-(15S)-11-alpha,15-dihydroxy-9-oxoprosta-5,13-dienoate + NADPH.,Catalytic activity:R-CHOH-R' + NADP(+) = R-CO-R' + NADPH.,Function:Catalyzes the reduction of a wide variety of carbonyl compounds including the antitumor anthracycline antibiotics. Can convert prostaglandin E2 to prostaglandin F2-alpha.,similarity:Belongs to the short-chain dehydrogenases/reductases (SDR) family.,subunit:Monomer.,		

| Validation Data



Western blot detection of CBR1 in HeLa,A431 and MDA-MB-468 cell lysates using CBR1 mouse mAb (1:1000 diluted).Predicted band size:30KDa,Observed band size:30KDa.



Immunocytochemistry stain of HeLa using CBR1 mouse mAb (1:100).

| Contact information

Orders: order.cn@immunoway.com
Support: support.cn@immunoway.com
Telephone: 400-8787-807(China)
Website: <http://www.immunoway.com.cn>
Address: 2200 Ringwood Ave San Jose, CA 95131 USA



Please scan the QR code
to access additional
product information:
CBR1 Mouse mAb

For Research Use Only. Not for Use in Diagnostic Procedures.

[Antibody](#) | [ELISA Kits](#) | [Protein](#) | [Reagents](#)