

## Fyn Mouse mAb

CatalogNo: YM1307

### Key Features

#### Host Species

- Mouse

#### Reactivity

- Human,Monkey,Rat,Mouse

#### Applications

- WB,ICC

#### MW

- 59kD (Observed)

### Storage

**Storage\*** -15°C to -25°C/1 year(Do not lower than -25°C)

**Formulation** Liquid in PBS containing 50% glycerol, 0.5% BSA and 0.02% sodium azide.

### Recommended Dilution Ratios

**WB 1:500**

**ICC 1:50**

### Basic Information

**Clonality** Monoclonal

**Clone Number** 1C3

### Immunogen Information

**Immunogen** Purified recombinant human Fyn protein fragments expressed in E.coli.

**Specificity** This antibody detects endogenous levels of Fyn and does not cross-react with related proteins.

### Target Information

**Gene name** fyn

**Protein Name**

Organism	Gene ID	UniProt ID
Human	<a href="#">2534;</a>	<a href="#">P06241;</a>
Mouse		<a href="#">P39688;</a>

**Cellular Localization**

Cytoplasm. Nucleus. Cell membrane. Present and active in lipid rafts. Palmitoylation is crucial for proper trafficking.

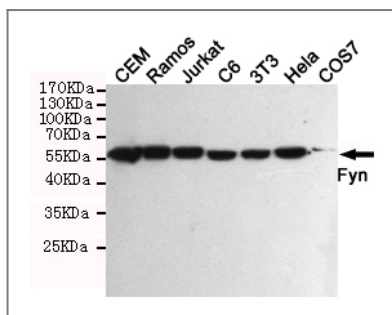
**Tissue specificity**

Isoform 1 is highly expressed in the brain. Isoform 2 is expressed in cells of hemopoietic lineages, especially T-lymphocytes.

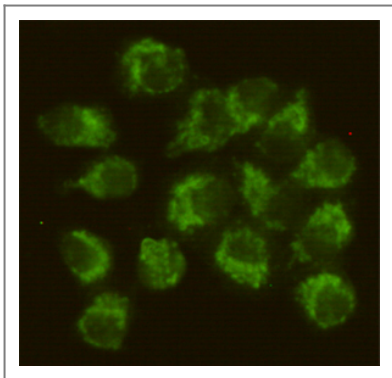
**Function**

Catalytic activity:ATP + a [protein]-L-tyrosine = ADP + a [protein]-L-tyrosine phosphate.,cofactor:Manganese.,enzyme regulation:Inhibited by phosphorylation of Tyr-531 by leukocyte common antigen and activated by dephosphorylation of this site.,Function:Implicated in the control of cell growth. Plays a role in the regulation of intracellular calcium levels, with isoform 2 showing the greater ability to mobilize cytoplasmic calcium in comparison to isoform 1. Required in brain development and mature brain function with important roles in the regulation of axon growth, axon guidance, and neurite extension. Blocks axon outgrowth and attraction induced by NTN1 by phosphorylating its receptor DDC.,similarity:Belongs to the protein kinase superfamily. Tyr protein kinase family.,similarity:Belongs to the protein kinase superfamily. Tyr protein kinase family. SRC subfamily.,similarity:Contains 1 protein kinase domain.,similarity:Contains 1 SH2 domain.,similarity:Contains 1 SH3 domain.,subcellular location:Present and active in lipid rafts. Present in cell body and along the process of mature and developing oligodendrocytes.,subunit:Associates through its SH3 domain, to the p85 subunit of phosphatidylinositol 3-kinase. Interacts with the FYN-binding protein (FYB). Interacts with phosphorylated TOM1L1. Interacts with CD79A upon activation of the B-cell antigen receptor which increases FYN activity (By similarity). Interacts with PAG1. Interacts (via SH3 domain) with PRMT8. Interacts with SH2D1A and SLAMF1. Interacts (via SH3 domain) with HEV ORF3 protein.,tissue specificity:Isoform 1 is highly expressed in the brain, isoform 2 is expressed in cells of hemopoietic lineages, especially T lymphocytes.,

## Validation Data



Western blot detection of Fyn in HeLa,3T3,C6,COS7,CEM,Ramos and Jurkat cell lysates using Fyn mouse mAb (1:500 diluted).Predicted band size:59KDa.Observed band size:59KDa.



Immunocytochemistry staining of HeLa cells fixed with -20°C Methanol and using Fyn mouse mAb (dilution 1:50).

## | Contact information

Orders: [order.cn@immunoway.com](mailto:order.cn@immunoway.com)  
Support: [support.cn@immunoway.com](mailto:support.cn@immunoway.com)  
Telephone: 400-8787-807(China)  
Website: <http://www.immunoway.com.cn>  
Address: 2200 Ringwood Ave San Jose, CA 95131 USA



Please scan the QR code to access additional product information:  
**Fyn Mouse mAb**

---

For Research Use Only. Not for Use in Diagnostic Procedures.

[Antibody](#) | [ELISA Kits](#) | [Protein](#) | [Reagents](#)