

GRB2 Mouse mAb

CatalogNo: YM1296

Key Features

Host Species

- Mouse

Reactivity

- Human, Mouse, Rat

Applications

- WB

MW

- 25kD (Observed)

Storage

Storage* -15°C to -25°C/1 year (Do not lower than -25°C)

Formulation Liquid in PBS containing 50% glycerol, 0.5% BSA and 0.02% sodium azide.

Recommended Dilution Ratios

WB 1:1000

Basic Information

Clonality Monoclonal

Clone Number 3H6

Immunogen Information

Immunogen Recombinant protein of human GRB2.

Specificity This antibody detects endogenous levels of GRB2 and does not cross-react with related proteins.

Target Information

Gene name GRB2

Protein Name Growth factor receptor-bound protein 2

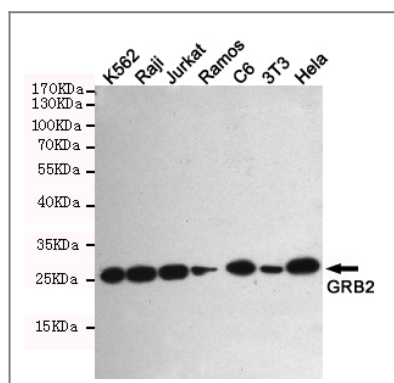
Organism	Gene ID	UniProt ID
Human	2885 ;	P62993 ;
Mouse	14784 ;	Q60631 ;
Rat	81504 ;	P62994 ;

Cellular Localization Nucleus . Cytoplasm . Endosome . Golgi apparatus .

Tissue specificity Brain,Cajal-Retzius cell,Epidermis,Epithelium,Fetal brain cortex,Fe

Function Alternative products:Additional isoforms seem to exist,Domain:The SH3 domains mediate interaction with RALGPS1 and SHB.,Function:Adapter protein that provides a critical link between cell surface growth factor receptors and the Ras signaling pathway.,Function:Isoform GRB3-3 does not bind to phosphorylated epidermal growth factor receptor (EGFR) but inhibits EGF-induced transactivation of a RAS-responsive element. Isoform GRB3-3 acts as a dominant negative protein over GRB2 and by suppressing proliferative signals, may trigger active programmed cell death.,similarity:Belongs to the GRB2/sem-5/DRK family.,similarity:Contains 1 SH2 domain.,similarity:Contains 2 SH3 domains.,subunit:Associates with activated Tyr-phosphorylated EGF receptors and PDGF receptors via its SH2 domain. Also associates to other cellular Tyr-phosphorylated proteins such as SIT1, IRS1, IRS4, SHC and LNK; probably via the concerted action of both its SH2 and SH3 domains. It also seems to interact with RAS in the signaling pathway leading to DNA synthesis. Binds to and translocates the guanine nucleotide exchange factors SOS. Interacts with phosphorylated TOM1L1 and MET. Interacts with the phosphorylated C-terminus of SH2B2. Interacts with phosphorylated SIT1, LAX1, LAT, LAT2 and LIME1 upon TCR and/or BCR activation. Interacts with NISCH, PTPNS1, REPS2 and the syntrophin SNTA1. Interacts with REPS1 and PIK3C2B via its SH3 domains (By similarity). Interacts with HCV NS5A via its SH3 domains. Interacts with CBL and CBLB. Interacts with JUB and CLNK (By similarity). Interacts with SHB, INPP5D/SHIP1, SKAP1 and SKAP2. Forms a complex with MUC1 and SOS1, through interaction of the SH3 domains with SOS1 and the SH2 domain with phosphorylated MUC1. Interacts with PRNP (By similarity). Interacts with RALGPS1 and with HCST. Interacts (via SH3 domain) with HEV ORF3 protein. Interacts with GAPT.,

Validation Data



Western blot detection of GRB2 in K562,Raji,Jurkat,Ramos,C6,3T3 and HeLa cell lysates using GRB2 mouse mAb (1:1000 diluted).Predicted band size:25KDa.Observed band size:25KDa.

| Contact information

Orders: order.cn@immunoway.com
Support: support.cn@immunoway.com
Telephone: 400-8787-807(China)
Website: <http://www.immunoway.com.cn>
Address: 2200 Ringwood Ave San Jose, CA 95131 USA



Please scan the QR code to access additional product information:
GRB2 Mouse mAb

For Research Use Only. Not for Use in Diagnostic Procedures.

[Antibody](#) | [ELISA Kits](#) | [Protein](#) | [Reagents](#)