

eEF2 Mouse mAb

CatalogNo: YM1295

| Key Features

Host Species

- Mouse

Reactivity

- Human

Applications

- WB,IHC,IF,ELISA

MW

- 95kD (Observed)

| Recommended Dilution Ratios

WB 1:5000

ICC 1:200

| Storage

Storage*

-15°C to -25°C/1 year(Do not lower than -25°C)

Formulation

Liquid in PBS containing 50% glycerol, 0.5% BSA and 0.02% sodium azide.

| Basic Information

Clonality

Monoclonal

| Immunogen Information

Immunogen

Purified recombinant human eEF2 protein fragments expressed in E.coli.

Specificity

This antibody detects endogenous levels of eEF2 and does not cross-react with related proteins.

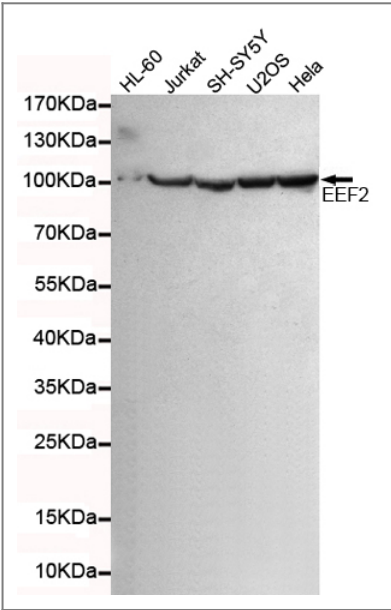
| Target Information

Gene name

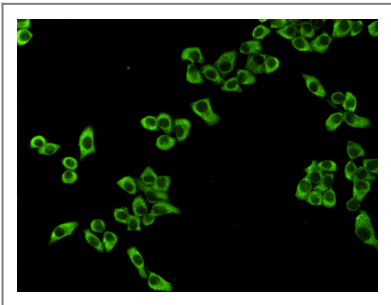
eef2

Protein Name	Organism	Gene ID	UniProt ID
	Human	1938 ;	P13639 ;
	Mouse	13629 ;	P58252 ;
Cellular Localization	Cytoplasm . Nucleus . Phosphorylation by CSK promotes cleavage and SUMOylation-dependent nuclear translocation of the C-terminal cleavage product. .		
Tissue specificity	Brain,Cajal-Retzius cell,Epithelium,Hepatocyte,Ovary,Periph		
Function	Function:This protein promotes the GTP-dependent translocation of the nascent protein chain from the A-site to the P-site of the ribosome.,PTM:Diphthamide is 2-[3-carboxyamido-3-(trimethyl-ammonio)propyl]histidine. Diphthamide can be ADP-ribosylated by diphtheria toxin and by Pseudomonas exotoxin A.,PTM:Phosphorylation by EF-2 kinase completely inactivates EF-2.,similarity:Belongs to the GTP-binding elongation factor family. EF-G/EF-2 subfamily.,subunit:Component of the mRNA surveillance SURF complex, at least composed of ERF1, ERF3 (ERF3A or ERF3B), EEF2, UPF1/RENT1, SMG1, SMG8 and SMG9.,		

Validation Data



Western blot detection of eEF2 in HL-60,Jurkat,SHSY-5Y,U2OS and HeLa cell lysates using eEF2 mouse mAb (1:5000 diluted).Predicted band size:95KDa.Observed band size: 95KDa.Exposure time:15s.



Immunocytochemistry staining of HeLa cells fixed with -20°C Methanol and using anti-eEF2 mouse mAb (dilution 1:200).

| Contact information

Orders: order.cn@immunoway.com
Support: support.cn@immunoway.com
Telephone: 400-8787-807(China)
Website: <http://www.immunoway.com.cn>
Address: 2200 Ringwood Ave San Jose, CA 95131 USA



Please scan the QR code
to access additional
product information:
eEF2 Mouse mAb

For Research Use Only. Not for Use in Diagnostic Procedures.

[Antibody](#) | [ELISA Kits](#) | [Protein](#) | [Reagents](#)