

## Cyclin D2 Mouse mAb

CatalogNo: YM1276 **Orthogonal Validated** 

### Key Features

#### Host Species

- Mouse

#### Reactivity

- Human

#### Applications

- WB

#### MW

- 38kD (Observed)

### Storage

**Storage\*** -15°C to -25°C/1 year(Do not lower than -25°C)

**Formulation** Liquid in PBS containing 50% glycerol, 0.5% BSA and 0.02% sodium azide.

### Recommended Dilution Ratios

WB 1:1000

### Basic Information

**Clonality** Monoclonal

**Clone Number** 12A6

### Immunogen Information

**Immunogen** Purified recombinant human Cyclin D2 protein fragments expressed in E.coli.

**Specificity** This antibody detects over-expressed levels of Cyclin D2 and does not cross-react with related proteins.

### Target Information

**Gene name** ccnd2

**Protein Name**

Organism	Gene ID	UniProt ID
Human	<a href="#">894;</a>	<a href="#">P30279;</a>
Mouse		<a href="#">P30280;</a>

**Cellular Localization**

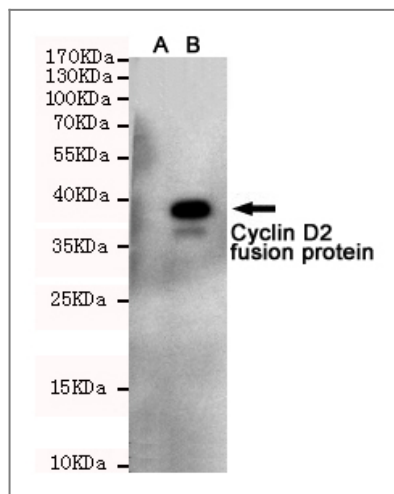
Nucleus . Cytoplasm . Nucleus membrane . Cyclin D-CDK4 complexes accumulate at the nuclear membrane and are then translocated into the nucleus through interaction with KIP/CIP family members. .; [Isoform 2]: Cytoplasm .

**Tissue specificity** Bone marrow,Heart,Placenta,Uterus,

**Function**

Function:Essential for the control of the cell cycle at the G1/S (start) transition.,similarity:Belongs to the cyclin family.,similarity:Belongs to the cyclin family. Cyclin D subfamily.,subunit:Interacts with the CDK4 and CDK6 protein kinases to form a serine/threonine kinase holoenzyme complex. The cyclin subunit imparts substrate specificity to the complex.,

## Validation Data



Western blot detection of Cyclin D2 in CHO-K1 cell lysate(A)and CHO-K1 transfected by Cyclin D2-fragment EGFP fusion protein(B)cell lysate using Cyclin D2 mouse mAb (1:1000 diluted).Predicted band size:38KDa.Observed band size:38KDa.

## Contact information

Orders: order.cn@immunoway.com  
Support: support.cn@immunoway.com  
Telephone: 400-8787-807(China)  
Website: <http://www.immunoway.com.cn>  
Address: 2200 Ringwood Ave San Jose, CA 95131 USA



Please scan the QR code to access additional product information:  
**Cyclin D2 Mouse mAb**

