

Protein Phosphatase 4C Mouse mAb

CatalogNo: YM1227

Key Features

Host Species

- Mouse

Reactivity

- Human

Applications

- WB,IHC,ICC

MW

- 34kD (Observed)

Recommended Dilution Ratios

WB 1:200

ICC 1:200

Storage

Storage*

-15°C to -25°C/1 year(Do not lower than -25°C)

Formulation

Liquid in PBS containing 50% glycerol, 0.5% BSA and 0.02% sodium azide.

Basic Information

Clonality

Monoclonal

Immunogen Information

Immunogen

Purified recombinant human Protein Phosphatase 4C protein fragments expressed in E.coli.

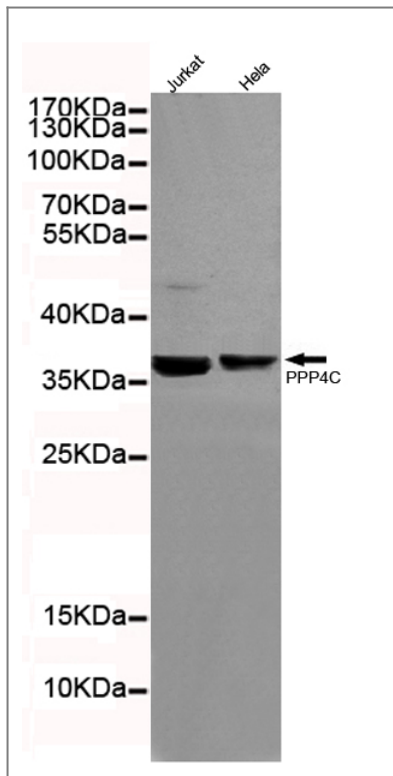
Specificity

This antibody detects endogenous levels of Protein Phosphatase 4C and does not cross-react with related proteins.

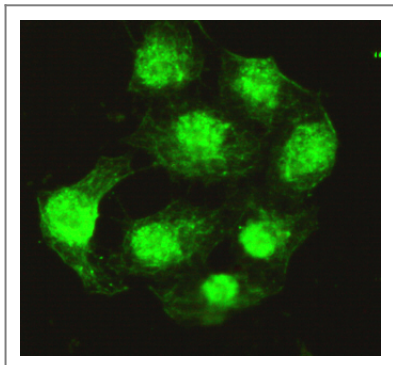
Target Information

Gene name	ppp4c		
Protein Name	Organism	Gene ID	UniProt ID
	Human	5531 ;	P60510 ;
	Mouse		P97470 ;
Cellular Localization	Cytoplasm. Nucleus. Cytoplasm, cytoskeleton, microtubule organizing center, centrosome.		
Tissue specificity	Placenta,		
Function	<p>Catalytic activity:A phosphoprotein + H(2)O = a protein + phosphate.,cofactor:Binds 1 iron ion per subunit.,cofactor:Binds 1 manganese ion per subunit.,Function:Protein phosphatase that is involved in many processes such as microtubule organization at centrosomes, maturation of spliceosomal snRNPs, apoptosis, tumor necrosis factor (TNF)-alpha signaling, activation of c-Jun N-terminal kinase MAPK8, regulation of histone acetylation, DNA damage checkpoint signaling, NF-kappa-B activation and cell migration. The PPP4C-PPP4R1 PP4 complex may play a role in dephosphorylation and regulation of HDAC3. The PPP4C-PPP4R2-PPP4R3A PP4 complex specifically dephosphorylates H2AFX phosphorylated on Ser-140 (gamma-H2AFX) generated during DNA replication and required for DNA DSB repair. Dephosphorylates NDEL1 at CDC2/Cdk1 phosphorylation sites and negatively regulates CDC2/Cdk1 activity in interphase.,similarity:Belongs to the PPP phosphatase family.,similarity:Belongs to the PPP phosphatase family. PP-4 (PP-X) subfamily.,subunit:Serine/threonine-protein phosphatase 4 (PP4) occurs in different assemblies of the catalytic and one or more regulatory subunits. Component of the PP4 complexes PPP4C-PPP4R1, PPP4C-PPP4R2, PPP4C-PPP4R2-PPP4R3A, PPP4C-PPP4R2-PPP4R3B and PPP4C-PPP4R4. The PPP4C-PPP4R2 complex appears to be a tetramer composed of 2 molecules of PPP4C and 2 molecules of PPP4R2. Interacts with REL, NFKB1/p50 and RELA. Interacts with SMN1 AND GEMIN4. Interacts with IRS4 (phosphorylated). Interacts with SMEK1/PPP4R3A; the interaction requires PP4R2. Interacts with HDAC3.,</p>		

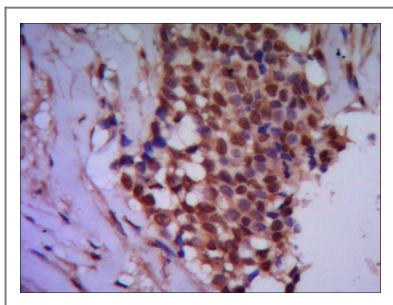
| Validation Data



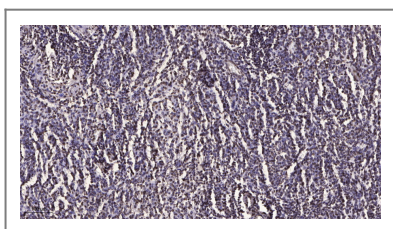
Western blot detection of Protein Phosphatase 4C in HeLa and Jurkat cell lysates using Protein Phosphatase 4C mouse mAb (1:200 diluted). Predicted band size: 34KDa. Observed band size: 34KDa.



Immunocytochemistry of HeLa cells using anti-Protein Phosphatase 4C mouse mAb diluted 1:200.



IHC of paraffin-embedded human breast cancer using anti-Protein Phosphatase 4C mouse mAb diluted 1/500-1/1000.



Immunohistochemical analysis of paraffin-embedded human brain tumor. 1, Antibody was diluted at 1:200 (4° overnight). 2, Tris-EDTA, pH 9.0 was used for antigen retrieval. 3, Secondary antibody was diluted at 1:200 (room temperature, 45min).

Contact information

Orders: order.cn@immunoway.com
Support: support.cn@immunoway.com
Telephone: 400-8787-807(China)
Website: <http://www.immunoway.com.cn>
Address: 2200 Ringwood Ave San Jose, CA 95131 USA



Please scan the QR code
to access additional
product information:
Protein
Phosphatase 4C
Mouse mAb

For Research Use Only. Not for Use in Diagnostic Procedures.

[Antibody](#) | [ELISA Kits](#) | [Protein](#) | [Reagents](#)