

## SCP-3 Mouse mAb

CatalogNo: YM1092

### | Key Features

#### Host Species

- Mouse

#### Reactivity

- Human

#### Applications

- WB

#### MW

- 28kD (Calculated)

### | Recommended Dilution Ratios

**WB 1:1000-1:2000**

**Not yet tested in other applications.**

### | Storage

#### Storage\*

-15°C to -25°C/1 year(Do not lower than -25°C)

#### Formulation

Liquid in PBS containing 50% glycerol, 0.5% BSA and 0.02% sodium azide.

### | Basic Information

#### Clonality

Monoclonal

#### Detection Method

Fluorometric

### | Immunogen Information

#### Immunogen

Purified recombinant human SCP-3 protein fragments expressed in E.coli.

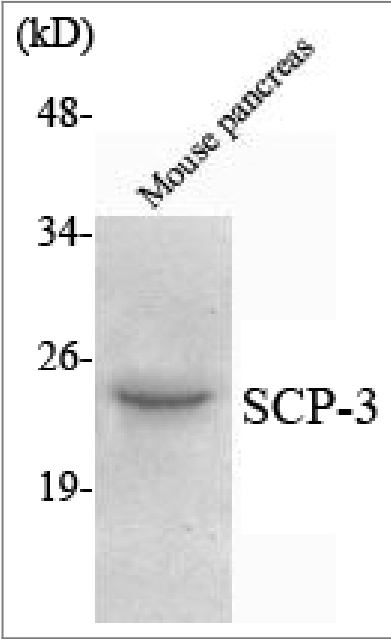
#### Specificity

SCP-3 Monoclonal Antibody detects endogenous levels of SCP-3 protein.

### | Target Information

Gene name	SYCP3		
Protein Name	Synaptonemal complex protein 3		
	Organism	Gene ID	UniProt ID
	Human	<a href="#">50511</a> ;	<a href="#">Q8IZU3</a> ;
	Mouse		<a href="#">P70281</a> ;
Cellular Localization	Nucleus . Chromosome . Chromosome, centromere . It is present in early unpaired cores, in the lateral domains of the synaptonemal complex and in the chromosome cores when they separate at diplotene. It is found axial to the metaphase I chromosomes and in association with pairs of sister centromeres. The centromere-associated protein becomes dissociated from the centromeres at anaphase II and is not found in mitotic metaphase centromeres. .		
Tissue specificity	Testis-specific.		
Function	Disease:Defects in SYCP3 are associated with azoospermia due to perturbations of meiosis [MIM:270960].,Function:Component of the transverse filaments of synaptonemal complexes (SCS), formed between homologous chromosomes during meiotic prophase. Has an essential meiotic function in spermatogenesis. May be important for testis development.,similarity:Belongs to the XLR/SYCP3 family.,subcellular location:In tripartite segments of synaptonemal complexes, irrespective of whether these are synapsed or unsynapsed.,subunit:Interacts with SYCP2.,tissue specificity:Testis-specific.,		

Validation Data



Western Blot analysis using SCP-3 Monoclonal Antibody against mouse pancreas lysate.

Contact information

Orders: order.cn@immunoway.com  
Support: support.cn@immunoway.com  
Telephone: 400-8787-807(China)  
Website: <http://www.immunoway.com.cn>  
Address: 2200 Ringwood Ave San Jose, CA 95131 USA



Please scan the QR code  
to access additional  
product information:  
**SCP-3 Mouse mAb**

---

For Research Use Only. Not for Use in Diagnostic Procedures.

[Antibody](#) | [ELISA Kits](#) | [Protein](#) | [Reagents](#)