

## PP2A-C $\alpha$ Mouse mAb

CatalogNo: YM1079

### | Key Features

#### Host Species

- Mouse

#### Reactivity

- Human, Mouse, Bovine, Chicken, Dog, Pig, Rabbit, Zebrafish

#### Applications

- WB, IF

#### MW

- 36kD

(Calculated)

### | Recommended Dilution Ratios

**WB 1:1000-1:2000**

**IF 1:100-1:500**

**Not yet tested in other applications.**

### | Storage

#### Storage\*

-15°C to -25°C/1 year(Do not lower than -25°C)

#### Formulation

Liquid in PBS containing 50% glycerol, 0.5% BSA and 0.02% sodium azide.

### | Basic Information

#### Clonality

Monoclonal

### | Immunogen Information

#### Immunogen

Purified recombinant human PP2A-C $\alpha$  (N-terminus) protein fragments expressed in E.coli.

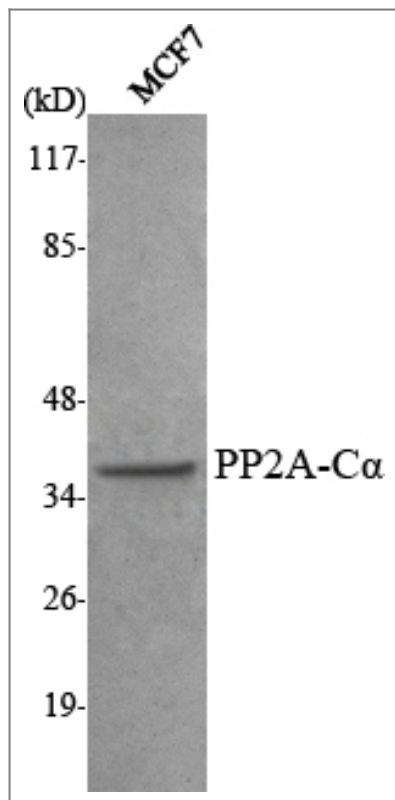
#### Specificity

PP2A-C $\alpha$  Monoclonal Antibody detects endogenous levels of PP2A-C $\alpha$  protein.

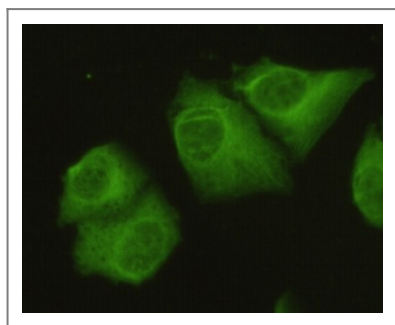
### | Target Information

Gene name	PPP2CA		
Protein Name	Serine/threonine-protein phosphatase 2A catalytic subunit alpha isoform		
	Organism	Gene ID	UniProt ID
	Human	<a href="#">5515</a> ;	<a href="#">P67775</a> ;
	Mouse	<a href="#">19052</a> ;	<a href="#">P63330</a> ;
	Rat		<a href="#">P63331</a> ;
Cellular Localization	Cytoplasm . Nucleus . Chromosome, centromere . Cytoplasm, cytoskeleton, spindle pole . In prometaphase cells, but not in anaphase cells, localizes at centromeres (PubMed:16541025). During mitosis, also found at spindle poles (PubMed:16541025). Centromeric localization requires the presence of SGO2 (By similarity). .		
Tissue specificity	Fibroblast,Liver,Lung,Placenta,Testis,Uterus,		
Function	Catalytic activity:A phosphoprotein + H(2)O = a protein + phosphate.,cofactor:Binds 1 iron ion per subunit.,cofactor:Binds 1 manganese ion per subunit.,Function:PP2A can modulate the activity of phosphorylase B kinase casein kinase 2, mitogen-stimulated S6 kinase, and MAP-2 kinase. Can dephosphorylate SV40 large T antigen and p53. Dephosphorylates SV40 large T antigen, preferentially on serine residues 120, 123, 677, and perhaps 679. The C subunit was most active, followed by the AC form, which was more active than the ABC form, and activity of all three forms was strongly stimulated by manganese, and to a lesser extent by magnesium. Dephosphorylation by the AC form, but not C or ABC form is inhibited by small T antigen.,PTM:Phosphorylation of either threonine (by autophosphorylation-activated protein kinase) or tyrosine results in inactivation of the phosphatase. Auto-dephosphorylation has been suggested as a mechanism for reactivation.,PTM:Reversibly methyl esterified on Leu-309. Carboxyl methylation may play a role in holoenzyme assembly. It varies during the cell cycle.,similarity:Belongs to the PPP phosphatase family.,similarity:Belongs to the PPP phosphatase family. PP-1 subfamily.,subcellular location:In prometaphase cells, but not in anaphase cells, localizes at centromeres. During mitosis, also found at spindle poles.,subunit:PP2A consists of a common heterodimeric core enzyme, composed of a 36 kDa catalytic subunit (subunit C) and a 65 kDa constant regulatory subunit (PR65 or subunit A), that associates with a variety of regulatory subunits. Proteins that associate with the core dimer include three families of regulatory subunits B (the R2/B/PR55/B55, R3/B''/PR72/PR130/PR59 and R5/B'/B56 families), the 48 kDa variable regulatory subunit, viral proteins, and cell signaling molecules. Interacts with NXN; the interaction is direct (By similarity). May indirectly interact with SGOL1, most probably through regulatory B56 subunits.,		

| Validation Data



Western Blot analysis using PP2A-C $\alpha$  Monoclonal Antibody against MCF7 cell lysate.



Immunofluorescence analysis of HeLa cells using PP2A-C $\alpha$  Monoclonal Antibody.

## Contact information

Orders: order.cn@immunoway.com  
 Support: support.cn@immunoway.com  
 Telephone: 400-8787-807(China)  
 Website: <http://www.immunoway.com.cn>  
 Address: 2200 Ringwood Ave San Jose, CA 95131 USA



Please scan the QR code to access additional product information:  
**PP2A-C $\alpha$  Mouse mAb**

For Research Use Only. Not for Use in Diagnostic Procedures.

[Antibody](#) | [ELISA Kits](#) | [Protein](#) | [Reagents](#)