

PA28γ Mouse mAb

CatalogNo: YM1070

Key Features

Host Species

- Mouse

Reactivity

- Human, Mouse, Dog, Pig

Applications

- WB, IF

MW

- 30kD (Calculated)

Recommended Dilution Ratios

WB 1:1000-1:2000

IF 1:100-1:500

Not yet tested in other applications.

Storage

Storage*

-15°C to -25°C/1 year(Do not lower than -25°C)

Formulation

Liquid in PBS containing 50% glycerol, 0.5% BSA and 0.02% sodium azide.

Basic Information

Clonality

Monoclonal

Immunogen Information

Immunogen

Purified recombinant human PA28γ protein fragments expressed in E.coli.

Specificity

PA28γ Monoclonal Antibody detects endogenous levels of PA28γ protein.

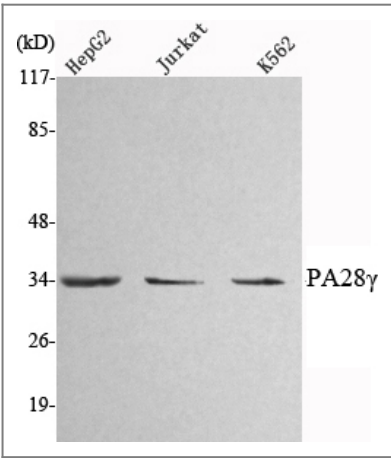
Target Information

Gene name

PSME3

Protein Name	Proteasome activator complex subunit 3		
	Organism	Gene ID	UniProt ID
	Human	10197;	P61289;
	Mouse	19192;	P61290;
Cellular Localization	Nucleus . Cytoplasm . Localizes to the cytoplasm during mitosis following nuclear envelope breakdown at this distinct stage of the cell cycle which allows its interaction with MAP3K3 kinase. .		
Tissue specificity	B-cell,Embryonic kidney,Fetal brain,Human endometrium carcinoma cell line,L		
Function	<p>Disease:Sera from patients with systemic lupus erythematosus often contain antibodies that react with the Ki antigen.,Domain:The C-terminal sequences affect heptamer stability and proteasome affinity.,Function:Subunit of the 11S REG-gamma (also called PA28-gamma) proteasome regulator, a donut-shaped homoheptamer which associates with the proteasome. 11S REG-gamma activates the trypsin-like catalytic subunit of the proteasome but inhibits the chymotrypsin-like and postglutamyl-preferring (PGPH) subunits. Facilitates the MDM2-TP53/p53 interaction which promotes ubiquitination- and MDM2-dependent proteasomal degradation of TP53/p53, limiting its accumulation and resulting in inhibited apoptosis after DNA damage. May also be involved in cell cycle regulation.,induction:Up-regulated in thyroid carcinoma cells.,PTM:Phosphorylated by MAP3K3.,similarity:Belongs to the PA28 family.,subcellular location:Localizes to the cytoplasm during mitosis following nuclear envelope breakdown at this distinct stage of the cell cycle which allows its interaction with MAP3K3 kinase.,subunit:Homoheptamer; the stability of the heptamer is essential for the specific activation of the trypsin-like subunit and inhibition of the chymotrypsin-like and postglutamyl-preferring (PGPH) subunits of the proteasome. Interacts with TP53/p53 and MDM2. Interacts with MAP3K3 (By similarity). Associates with the proteasome.,</p>		

Validation Data



Western Blot analysis using PA28γ Monoclonal Antibody against HepG2, Jurkat, K562 cell lysate.

Contact information

Orders: order.cn@immunoway.com
Support: support.cn@immunoway.com
Telephone: 400-8787-807(China)
Website: <http://www.immunoway.com.cn>
Address: 2200 Ringwood Ave San Jose, CA 95131 USA



Please scan the QR code
to access additional
product information:
PA28 γ Mouse mAb

For Research Use Only. Not for Use in Diagnostic Procedures.

[Antibody](#) | [ELISA Kits](#) | [Protein](#) | [Reagents](#)