

## Mi2- $\alpha$ Mouse mAb

CatalogNo: YM1062

### Key Features

#### Host Species

- Mouse

#### Reactivity

- Human, Mouse, Rat, Bovine, Dog, Pig

#### Applications

- WB, IHC, IF, FC

#### MW

- 227kD (Calculated)

### Storage

**Storage\*** -15°C to -25°C/1 year(Do not lower than -25°C)

**Formulation** Liquid in PBS containing 50% glycerol, 0.5% BSA and 0.02% sodium azide.

### Recommended Dilution Ratios

**WB 1:1000-1:2000**

**IHC 1:500-1:1000**

**IF 1:100-1:500**

**Flow Cyt 1:100-1:200**

**Not yet tested in other applications.**

### Basic Information

**Clonality** Monoclonal

**Clone Number** 4A5

### Immunogen Information

**Immunogen** Purified recombinant human Mi2- $\alpha$  (C-terminus) protein fragments expressed in E.coli.

**Specificity** Mi2- $\alpha$  Monoclonal Antibody detects endogenous levels of Mi2- $\alpha$  protein.

## Target Information

**Gene name** CHD3

**Protein Name** Chromodomain-helicase-DNA-binding protein 3

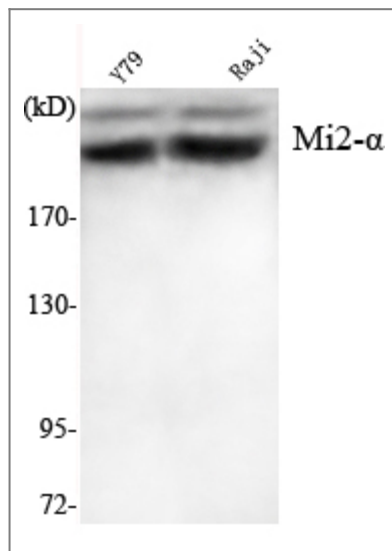
Organism	Gene ID	UniProt ID
Human	<a href="#">1107</a> ;	<a href="#">Q12873</a> ;

**Cellular Localization** Nucleus, PML body . Nucleus . Cytoplasm, cytoskeleton, microtubule organizing center, centrosome . Associates with centrosomes in interphase and mitosis. .

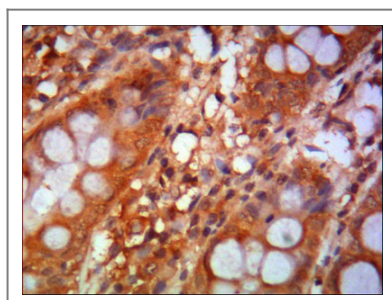
**Tissue specificity** Widely expressed.

**Function** Disease:One of the main antigens reacting with anti-MI-2 positive sera of dermatomyositis.,Function:Probable transcription regulator.,sequence Caution:Differs from position 1967 onward for unknown reasons.,similarity:Belongs to the SNF2/RAD54 helicase family.,similarity:Contains 1 helicase ATP-binding domain.,similarity:Contains 1 helicase C-terminal domain.,similarity:Contains 2 chromo domains.,similarity:Contains 2 PHD-type zinc fingers.,subunit:Central component of the nucleosome remodeling and histone deacetylase (NuRD) repressive complex. Interacts with TRIM28 and SERBP1. Interacts via its C-terminal region with HABP4.,tissue specificity:Widely expressed.,

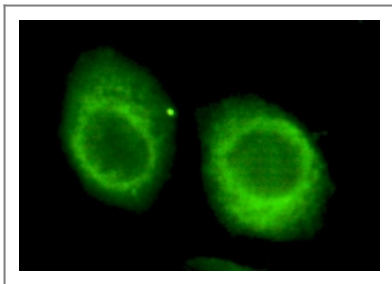
## Validation Data



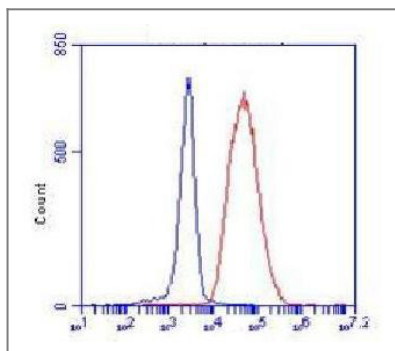
Western Blot analysis using Mi2- $\alpha$  Monoclonal Antibody against Y7P, Raji cell lysate.



Immunohistochemistry analysis of paraffin-embedded human colon using Mi2- $\alpha$  Monoclonal Antibody.



Immunofluorescence analysis of HeLa cells using Mi2-α Monoclonal Antibody.



Flow cytometric analysis of K562 cells stained with Mi2-α Monoclonal Antibody (red), followed by FITC-conjugated goat anti-mouse IgG. Blue line histogram represents the isotype control, normal mouse IgG.

## Contact information

Orders: order.cn@immunoway.com  
Support: support.cn@immunoway.com  
Telephone: 400-8787-807(China)  
Website: <http://www.immunoway.com.cn>  
Address: 2200 Ringwood Ave San Jose, CA 95131 USA



Please scan the QR code to access additional product information:  
**Mi2-α Mouse mAb**

For Research Use Only. Not for Use in Diagnostic Procedures.

[Antibody](#) | [ELISA Kits](#) | [Protein](#) | [Reagents](#)