

Integrin $\alpha 5$ Mouse mAb

CatalogNo: YM1054

Key Features

Host Species

- Mouse

Reactivity

- Human, Mouse, Rat, Bovine

Applications

- WB, FC

MW

- 115kD (Calculated)

Recommended Dilution Ratios

WB 1:1000-1:2000

Flow Cyt 1:100-1:200

Not yet tested in other applications.

Storage

Storage*

-15°C to -25°C/1 year (Do not lower than -25°C)

Formulation

Liquid in PBS containing 50% glycerol, 0.5% BSA and 0.02% sodium azide.

Basic Information

Clonality

Monoclonal

Immunogen Information

Immunogen

Purified recombinant human Integrin $\alpha 5$ (N-terminus) protein fragments expressed in E.coli.

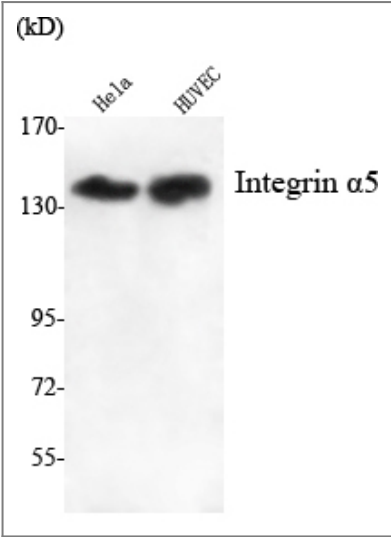
Specificity

Integrin $\alpha 5$ Monoclonal Antibody detects endogenous levels of Integrin $\alpha 5$ protein.

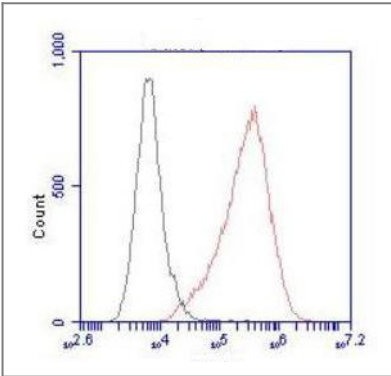
Target Information

Gene name	ITGA5		
Protein Name	Integrin alpha-5		
	Organism	Gene ID	UniProt ID
	Human	3678;	P08648;
	Mouse	16402;	P11688;
Cellular Localization	Membrane; Single-pass type I membrane protein. Cell junction, focal adhesion . Cell surface .		
Tissue specificity	Liver,Placenta,		
Function	Function:Integrin alpha-5/beta-1 is a receptor for fibronectin and fibrinogen. It recognizes the sequence R-G-D in its ligands. In case of HIV-1 infection, the interaction with extracellular viral Tat protein seems to enhance angiogenesis in Kaposi's sarcoma lesions.,similarity:Belongs to the integrin alpha chain family.,similarity:Contains 7 FG-GAP repeats.,subunit:Heterodimer of an alpha and a beta subunit. The alpha subunit is composed of an heavy and a light chain linked by a disulfide bond. Alpha-5 associates with beta-1. Interacts with HPS5 and NISCH. Interacts with HIV-1 Tat. Interacts with RAB21.,		

| Validation Data



Western Blot analysis using Integrin α5 Monoclonal Antibody against HeLa, HUVEC cell lysate.



Flow cytometric analysis of HeLa cells stained with Integrin α5 Monoclonal Antibody (red), followed by FITC-conjugated goat anti-mouse IgG. Black line histogram represents the isotype control, normal mouse IgG.

| Contact information

Orders: order.cn@immunoway.com
Support: support.cn@immunoway.com
Telephone: 400-8787-807(China)
Website: <http://www.immunoway.com.cn>
Address: 2200 Ringwood Ave San Jose, CA 95131 USA



Please scan the QR code
to access additional
product information:
**Integrin α 5 Mouse
mAb**

For Research Use Only. Not for Use in Diagnostic Procedures.

[Antibody](#) | [ELISA Kits](#) | [Protein](#) | [Reagents](#)