

## hnRNP U Mouse mAb

CatalogNo: YM1044

### | Key Features

#### Host Species

- Mouse

#### Reactivity

- Human,Bovine,Pig,Rabbit

#### Applications

- WB

#### MW

- 91kD (Calculated)

### | Recommended Dilution Ratios

**WB 1:1000-1:2000**

**Not yet tested in other applications.**

### | Storage

**Storage\*** -15°C to -25°C/1 year(Do not lower than -25°C)

**Formulation** Liquid in PBS containing 50% glycerol, 0.5% BSA and 0.02% sodium azide.

### | Basic Information

**Clonality** Monoclonal

### | Immunogen Information

**Immunogen** Purified recombinant human hnRNP U protein fragments expressed in E.coli.

**Specificity** hnRNP U Monoclonal Antibody detects endogenous levels of hnRNP U protein.

### | Target Information

**Gene name** HNRNPU

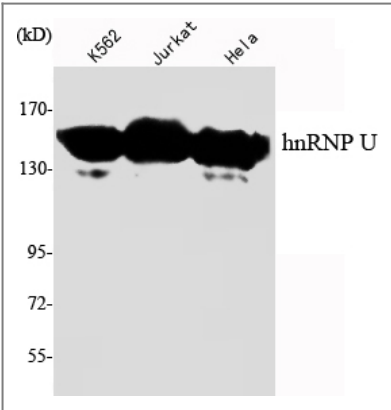
<b>Protein Name</b>	Heterogeneous nuclear ribonucleoprotein U		
	<b>Organism</b>	<b>Gene ID</b>	<b>UniProt ID</b>
	Human	<a href="#">3192;</a>	<a href="#">Q00839;</a>
	Mouse		<a href="#">Q8VEK3;</a>

**Cellular Localization** Nucleus . Nucleus matrix . Chromosome . Nucleus speckle . Cytoplasm, cytoskeleton, microtubule organizing center, centrosome . Chromosome, centromere, kinetochore . Cytoplasm, cytoskeleton, spindle . Cytoplasm, cytoskeleton, spindle pole . Midbody . Cytoplasm . Cell surface . Cytoplasmic granule . Localizes at inactive X chromosome (Xi) regions (PubMed:11003645, PubMed:14608463, PubMed:15563465). Localizes in the nucleus during interphase (PubMed:21242313). At metaphase, localizes with mitotic spindle microtubules (MTs) (PubMed:21242313). At anaphase, localizes in the mitotic spindle midzone (PubMed:21242313). Localizes in spindle MTs proximal to spindle poles in a TPX2- and AURKA-dependent manner (PubMed:21242313). The Ser-59 phosphorylated form localizes to centrosomes during prophase and metaphase, to mitotic spindles in anaphase and to the midbody during cytokinesis (PubMed:25986610). Colocalizes with SMARCA4 in the nucleus (By similarity). Colocalizes with CBX5 in the nucleus (PubMed:19617346). Colocalizes with NR3C1 in nuclear speckles (PubMed:9353307). Localized in cytoplasmic ribonucleoprotein (RNP) granules containing untranslated mRNAs (PubMed:17289661). .

**Tissue specificity** Widely expressed.

**Function** Function: Binds to pre-mRNA. Has high affinity for scaffold-attached region (SAR) DNA. Bind to double- and single-stranded DNA and RNA.,PTM:Arg-732 and Arg-738 are dimethylated, probably to asymmetric dimethylarginine.,PTM:Extensively phosphorylated.,similarity:Contains 1 B30.2/SPRY domain.,similarity:Contains 1 SAP domain.,subcellular location:Component of ribonucleosomes. Also found associated with the cell surface.,subunit:Identified in the spliceosome C complex, at least composed of AQR, ASCC3L1, C19orf29, CDC40, CDC5L, CRNKL1, DDX23, DDX41, DDX48, DDX5, DGCR14, DHX35, DHX38, DHX8, EFTUD2, FRG1, GPATC1, HNRNPA1, HNRNPA2B1, HNRPA3, HNRNPC, HNRPF, HNRPH1, HNRPK, HNRPM, HNRNPR, HNRNPU, KIAA1160, KIAA1604, LSM2, LSM3, MAGOH, MORG1, PABPC1, PLRG1, PNN, PPIE, PPIL1, PPIL3, PPWD1, PRPF19, PRPF4B, PRPF6, PRPF8, RALY, RBM22, RBM8A, RBMX, SART1, SF3A1, SF3A2, SF3A3, SF3B1, SF3B2, SF3B3, SFRS1, SKIV2L2, SNRPA1, SNRPB, SNRPB2, SNRPD1, SNRPD2, SNRPD3, SNRPE, SNRPF, SNRPG, SNW1, SRRM1, SRRM2, SYF2, SYNCRIP, TFIP11, THOC4, U2AF1, WDR57, XAB2 and ZCCHC8. Ligand for CR2.,

## Validation Data



## | Contact information

Orders: order.cn@immunoway.com  
Support: support.cn@immunoway.com  
Telephone: 400-8787-807(China)  
Website: <http://www.immunoway.com.cn>  
Address: 2200 Ringwood Ave San Jose, CA 95131 USA



Please scan the QR code  
to access additional  
product information:  
**hnRNP U Mouse  
mAb**

---

For Research Use Only. Not for Use in Diagnostic Procedures.

[Antibody](#) | [ELISA Kits](#) | [Protein](#) | [Reagents](#)