

Actinin- α 2 Mouse mAb

CatalogNo: YM1004

| Key Features

Host Species

- Mouse

Reactivity

- Human,Rat,Bovine,Chicken,Dog,Pig,Zebrafish

Applications

- WB,IF

MW

- 104kD (Calculated)

| Recommended Dilution Ratios

WB 1:1000-1:2000

IF 1:100-1:500

Not yet tested in other applications.

| Storage

Storage*

-15°C to -25°C/1 year(Do not lower than -25°C)

Formulation

Liquid in PBS containing 50% glycerol, 0.5% BSA and 0.02% sodium azide.

| Basic Information

Clonality

Monoclonal

| Immunogen Information

Immunogen

Purified recombinant human Actinin- α 2 (C-terminus) protein fragments expressed in E.coli.

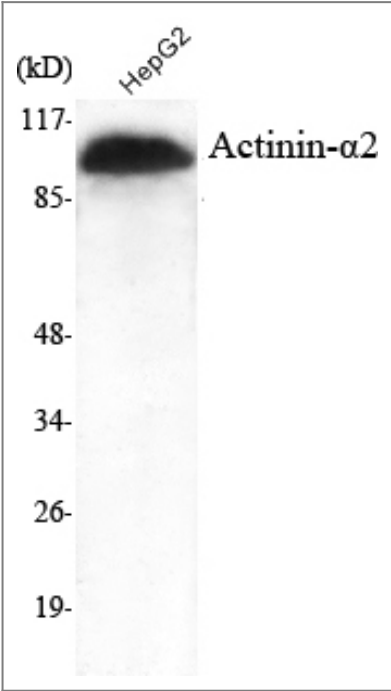
Specificity

Actinin- α 2 Monoclonal Antibody detects endogenous levels of Actinin- α 2 protein.

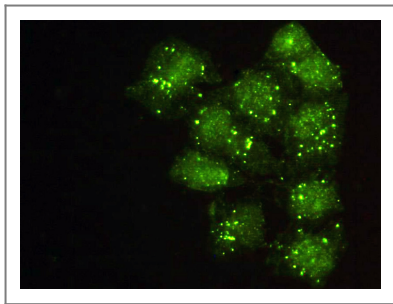
| Target Information

Gene name	ACTN2/ACTN3		
Protein Name	Alpha-actinin-2		
	Organism	Gene ID	UniProt ID
	Human	88;	P35609;
	Mouse		Q9JI91;
Cellular Localization	Cytoplasm, myofibril, sarcomere, Z line . Colocalizes with MYOZ1 and FLNC at the Z-lines of skeletal muscle.		
Tissue specificity	Expressed in both skeletal and cardiac muscle.		
Function	Disease:Defects in ACTN2 are the cause of cardiomyopathy dilated type 1AA (CMD1AA) [MIM:612158]. Dilated cardiomyopathy is a disorder characterized by ventricular dilation and impaired systolic function, resulting in congestive heart failure and arrhythmia. Patients are at risk of premature death.,Function:F-actin cross-linking protein which is thought to anchor actin to a variety of intracellular structures. This is a bundling protein.,similarity:Belongs to the alpha-actinin family.,similarity:Contains 1 actin-binding domain.,similarity:Contains 2 CH (calponin-homology) domains.,similarity:Contains 2 EF-hand domains.,similarity:Contains 4 spectrin repeats.,subcellular location:Colocalizes with MYOZ1 and FLNC at the Z-lines of skeletal muscle.,subunit:Homodimer; antiparallel. Also forms heterodimers with ACTN3. Interacts with ADAM12, MYOZ1, MYOZ2 and MYOZ3. Interacts via its C-terminal region with the LDB3 PDZ domain. Interacts with XIRP2.,tissue specificity:Expressed in both skeletal and cardiac muscle.,		

| Validation Data



Western Blot analysis using Actinin-α2 Monoclonal Antibody against HepG2 cell lysate.



Immunofluorescence analysis of HeLa cells using Actinin-α2 Monoclonal Antibody.

| Contact information

Orders: order.cn@immunoway.com
Support: support.cn@immunoway.com
Telephone: 400-8787-807(China)
Website: <http://www.immunoway.com.cn>
Address: 2200 Ringwood Ave San Jose, CA 95131 USA



Please scan the QR code to access additional product information:
Actinin-α2 Mouse mAb

For Research Use Only. Not for Use in Diagnostic Procedures.

[Antibody](#) | [ELISA Kits](#) | [Protein](#) | [Reagents](#)