

# Synaptotagmin 1 Mouse mAb

CatalogNo: YM0605

Orthogonal Validated 

## Key Features

### Host Species

- Mouse

### Reactivity

- Human

### Applications

- WB, ELISA

## Recommended Dilution Ratios

**WB 1:500-1:2000****ELISA 1:10000****Not yet tested in other applications.**

## Storage

**Storage\*** -15°C to -25°C/1 year(Do not lower than -25°C)**Formulation** Liquid in PBS containing 50% glycerol, 0.5% BSA and 0.02% sodium azide.

## Basic Information

**Clonality** Monoclonal

## Immunogen Information

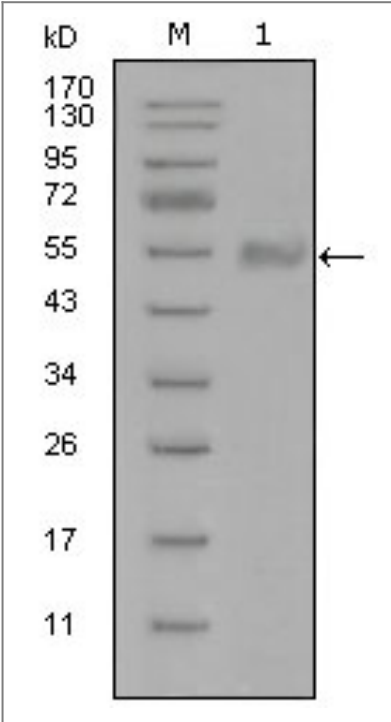
**Immunogen** Purified recombinant fragment of Synaptotagmin 1 expressed in E. Coli.**Specificity** Synaptotagmin 1 Monoclonal Antibody detects endogenous levels of Synaptotagmin 1 protein.

## Target Information

**Gene name** SYT1

Protein Name	Synaptotagmin-1		
	Organism	Gene ID	UniProt ID
	Human	<a href="#">6857;</a>	<a href="#">P21579;</a>
	Mouse		<a href="#">P46096;</a>
Cellular Localization	Cytoplasmic vesicle, secretory vesicle membrane ; Single-pass membrane protein . Cytoplasmic vesicle, secretory vesicle, synaptic vesicle membrane ; Single-pass membrane protein . Cytoplasmic vesicle, secretory vesicle, chromaffin granule membrane ; Single-pass membrane protein . Cytoplasm .		
Tissue specificity	Expressed in melanocytes (PubMed:23999003).		
Function	cofactor: Binds 3 calcium ions per subunit. The ions are bound to the C2 domains.,Domain: The first C2 domain mediates Ca(2+)-dependent phospholipid binding.,Domain: The second C2 domain mediates interaction with SV2A and STN2.,Function: May have a regulatory role in the membrane interactions during trafficking of synaptic vesicles at the active zone of the synapse. It binds acidic phospholipids with a specificity that requires the presence of both an acidic head group and a diacyl backbone. A Ca(2+)-dependent interaction between synaptotagmin and putative receptors for activated protein kinase C has also been reported. It can bind to at least three additional proteins in a Ca(2+)-independent manner; these are neurexins, syntaxin and AP2.,similarity: Belongs to the synaptotagmin family.,similarity: Contains 2 C2 domains.,subcellular location: Synaptic vesicles and chromaffin granules.,subunit: Homotetramer (Probable). Interacts with SCAMP5, STN2, SV2A, SV2B, SV2C and RIMS1. Forms a complex with SV2B, syntaxin 1 and SNAP25.,		

| Validation Data



Western Blot analysis using Synaptotagmin 1 Monoclonal Antibody against truncated Trx-Synaptotagmin 1 recombinant protein (1).

## | Contact information

Orders: order.cn@immunoway.com  
Support: support.cn@immunoway.com  
Telephone: 400-8787-807(China)  
Website: <http://www.immunoway.com.cn>  
Address: 2200 Ringwood Ave San Jose, CA 95131 USA



Please scan the QR code  
to access additional  
product information:  
**Synaptotagmin 1**  
**Mouse mAb**

---

For Research Use Only. Not for Use in Diagnostic Procedures.

[Antibody](#) | [ELISA Kits](#) | [Protein](#) | [Reagents](#)