

## SRA1 Mouse mAb

CatalogNo: YM0595

### | Key Features

#### Host Species

- Mouse

#### Reactivity

- Human

#### Applications

- WB,IHC,IF,ELISA

#### MW

- 24kD (Calculated)

### | Recommended Dilution Ratios

**WB 1:500-1:2000**

**IHC 1:200-1:1000**

**ELISA 1:10000**

**IF 1:50-200**

### | Storage

#### Storage\*

-15°C to -25°C/1 year(Do not lower than -25°C)

#### Formulation

Liquid in PBS containing 50% glycerol, 0.5% BSA and 0.02% sodium azide.

### | Basic Information

#### Clonality

Monoclonal

#### Clone Number

8G12

### | Immunogen Information

#### Immunogen

Purified recombinant fragment of SRA1 expressed in E. Coli.

#### Specificity

SRA1 Monoclonal Antibody detects endogenous levels of SRA1 protein.

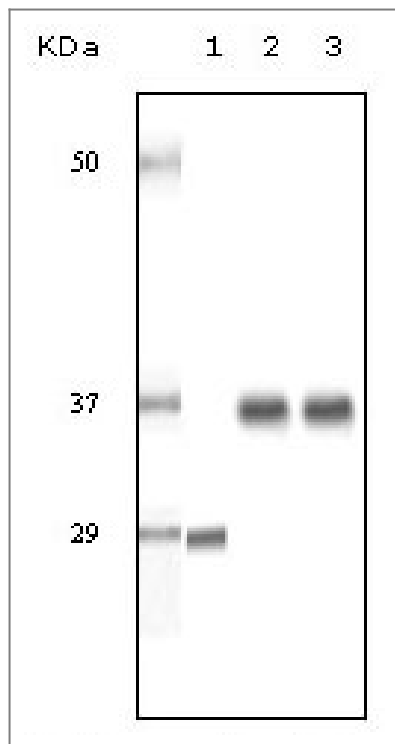
---

## | Target Information

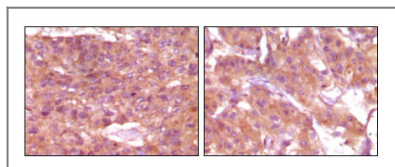
Gene name	SRA1		
Protein Name	Steroid receptor RNA activator 1		
	Organism	Gene ID	UniProt ID
	Human	<a href="#">10011</a> ;	<a href="#">Q9HD15</a> ;
	Mouse		<a href="#">Q80VJ2</a> ;
Cellular Localization	Nucleus . Cytoplasm .		
Tissue specificity	Highly expressed in liver and skeletal muscle and to a lesser extent in brain. Also expressed in both normal and tumorigenic breast epithelial cell lines. Significantly up-regulated in human tumors of the breast, ovary, and uterus.		
Function	Function:Functional RNA which acts as a transcriptional coactivator that selectively enhances steroid receptor-mediated transactivation ligand-independently through a mechanism involving the modulating N-terminal domain (AF-1) of steroid receptors. Also mediates transcriptional coactivation of steroid receptors ligand-dependently through the steroid-binding domain (AF-2). Enhances cellular proliferation and differentiation and promotes apoptosis in vivo. May play a role in tumorigenesis.,miscellaneous:Appears to be the first example of a new class of functional RNAs also able to encode a protein.,similarity:Belongs to the SRA1 family.,subunit:SRA1 RNA exists in a ribonucleoprotein complex containing NCOA1. The RNA also forms a complex with PUS1 and RARG in the nucleus. Interacts with AR.,tissue specificity:Highly expressed in liver and skeletal muscle and to a lesser extent in brain. Also expressed in both normal and tumorigenic breast epithelial cell lines. Significantly up-regulated in human tumors of the breast, ovary, and uterus.,		

---

## | Validation Data



Western Blot analysis using SRA1 Monoclonal Antibody against truncated SRA recombinant protein (1), human ovary cancer tissue lysate (2) and A431 cell lysate (3).



Immunohistochemistry analysis of paraffin-embedded human skin carcinoma (left) and breast carcinoma (right), showing cytoplasmic and membrane localization with DAB staining using SRA1 Monoclonal Antibody.

## Contact information

Orders: order.cn@immunoway.com  
 Support: support.cn@immunoway.com  
 Telephone: 400-8787-807(China)  
 Website: <http://www.immunoway.com.cn>  
 Address: 2200 Ringwood Ave San Jose, CA 95131 USA



Please scan the QR code to access additional product information:  
**SRA1 Mouse mAb**

For Research Use Only. Not for Use in Diagnostic Procedures.

[Antibody](#) | [ELISA Kits](#) | [Protein](#) | [Reagents](#)