

## p90RSK Mouse mAb

CatalogNo: YM0564

### | Key Features

#### Host Species

- Mouse

#### Reactivity

- Human

#### Applications

- WB,IHC,IF,ELISA

#### MW

- 83kD (Calculated)

### | Recommended Dilution Ratios

**WB 1:500-1:2000**

**IHC 1:200-1:1000**

**ELISA 1:10000**

**IF 1:50-200**

### | Storage

#### Storage\*

-15°C to -25°C/1 year(Do not lower than -25°C)

#### Formulation

Liquid in PBS containing 50% glycerol, 0.5% BSA and 0.02% sodium azide.

### | Basic Information

#### Clonality

Monoclonal

### | Immunogen Information

#### Immunogen

Purified recombinant fragment of human Rsk-1 expressed in E. Coli.

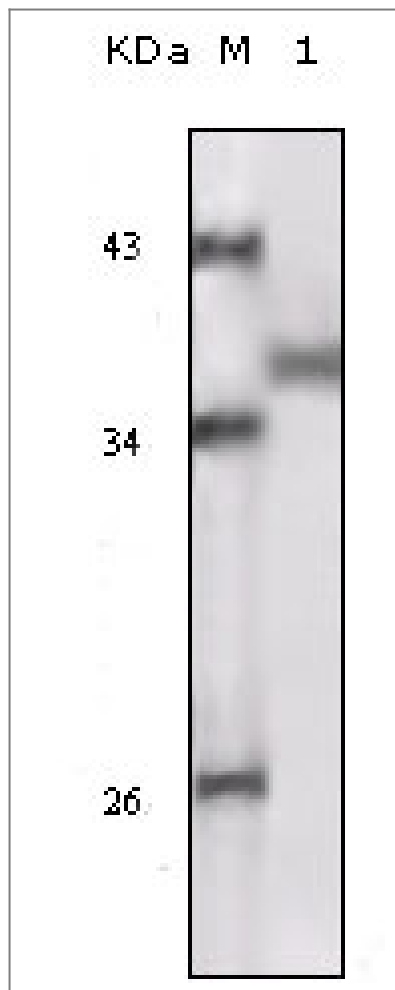
#### Specificity

Rsk-1 Monoclonal Antibody detects endogenous levels of Rsk-1 protein.

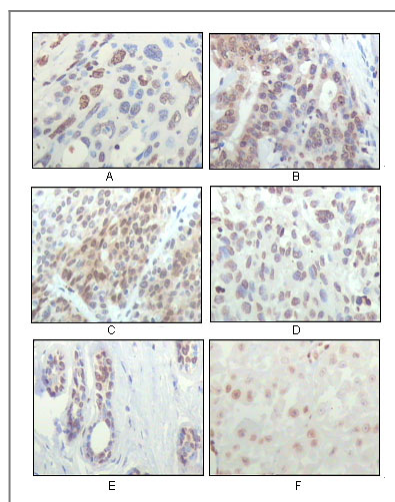
### | Target Information

Gene name	RPS6KA1 MAPKAPK1A RSK1		
Protein Name	Ribosomal protein S6 kinase alpha-1		
	Organism	Gene ID	UniProt ID
	Human	<a href="#">6195</a> ;	<a href="#">Q15418</a> ;
Cellular Localization	Nucleus. Cytoplasm.		
Tissue specificity	Colon,Epithelium,		
Function	Catalytic activity:ATP + a protein = ADP + a phosphoprotein.,Caution:The sequence shown here is derived from an Ensembl automatic analysis pipeline and should be considered as preliminary data.,cofactor:Magnesium.,enzyme regulation:Activated by multiple phosphorylations on threonine and serine residues.,Function:Serine/threonine kinase that may play a role in mediating the growth-factor and stress induced activation of the transcription factor CREB.,PTM:Autophosphorylated on Ser-380, as part of the activation process.,similarity:Belongs to the protein kinase superfamily.,similarity:Belongs to the protein kinase superfamily. AGC Ser/Thr protein kinase family. S6 kinase subfamily.,similarity:Contains 1 AGC-kinase C-terminal domain.,similarity:Contains 2 protein kinase domains.,subunit:Forms a complex with either ERK1 or ERK2 in quiescent cells. Transiently dissociates following mitogenic stimulation.,		

## | Validation Data



Western Blot analysis using Rsk-1 Monoclonal Antibody against truncated Rsk-1 recombinant protein.



Immunohistochemistry analysis of paraffin-embedded human esophageal squamous cell carcinoma (A), colon adenocarcinoma (B), liver carcinoma (C), skin carcinoma (D), breast ductal tumor (E) and brain tumor (F), showing nuclear localization with DAB staining

## Contact information

Orders: order.cn@immunoway.com  
 Support: support.cn@immunoway.com  
 Telephone: 400-8787-807(China)  
 Website: <http://www.immunoway.com.cn>  
 Address: 2200 Ringwood Ave San Jose, CA 95131 USA



Please scan the QR code to access additional product information:  
**p90RSK Mouse mAb**

