

## Ribosomal Protein S27 Mouse mAb

CatalogNo: YM0559

### | Key Features

#### Host Species

- Mouse

#### Reactivity

- Human

#### Applications

- IF,ELISA

### | Recommended Dilution Ratios

IF 1:200-1:1000

ELISA 1:10000

Not yet tested in other applications

### | Storage

#### Storage\*

-15°C to -25°C/1 year(Do not lower than -25°C)

#### Formulation

Liquid in PBS containing 50% glycerol, 0.5% BSA and 0.02% sodium azide.

### | Basic Information

#### Clonality

Monoclonal

### | Immunogen Information

#### Immunogen

Purified recombinant fragment of Ribosomal Protein S27 expressed in E. Coli.

#### Specificity

Ribosomal Protein S27 Monoclonal Antibody detects endogenous levels of Ribosomal Protein S27 protein.

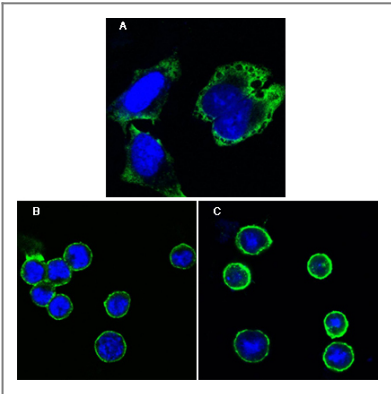
### | Target Information

#### Gene name

RPS27

<b>Protein Name</b>	40S ribosomal protein S27		
	<b>Organism</b>	<b>Gene ID</b>	<b>UniProt ID</b>
	Human	<a href="#">6232</a> ;	<a href="#">P42677</a> ;
	Mouse		<a href="#">Q6ZWU9</a> ;
<b>Cellular Localization</b>	nucleus,nucleoplasm,cytosol,ribosome,cytosolic small ribosomal subunit,		
<b>Tissue specificity</b>	Expressed in a wide variety of actively proliferating cells and tumor tissues.		
<b>Function</b>	Caution:Was originally (PubMed:8407955) thought to be a protein that could have played a role as a potentially important mediator of cellular proliferative responses to various growth factors and other environmental signals. Capable of specific binding to a cAMP response element in DNA.,cofactor:Binds 1 zinc ion per subunit .,cofactor:Binds 1 zinc ion per subunit.,similarity:Belongs to the ribosomal protein S27e family.,tissue specificity:Expressed in a wide variety of actively proliferating cells and tumor tissues.,		

Validation Data



Confocal immunofluorescence analysis of HeLa cells (A), BCBL-1 cells (B) and L1210 cells (C) using Ribosomal Protein S27 Monoclonal Antibody (green). Blue: DRAQ5 fluorescent DNA dye.

Contact information

Orders: order.cn@immunoway.com  
Support: support.cn@immunoway.com  
Telephone: 400-8787-807(China)  
Website: http://www.immunoway.com.cn  
Address: 2200 Ringwood Ave San Jose, CA 95131 USA



Please scan the QR code to access additional product information:  
**Ribosomal Protein S27 Mouse mAb**