

## Rab 10 Mouse mAb

CatalogNo: YM0544

### | Key Features

#### Host Species

- Mouse

#### Reactivity

- Human, Mouse

#### Applications

- WB, IF, ELISA

#### MW

- 23kD (Calculated)

### | Recommended Dilution Ratios

**WB 1:500-1:2000**

**IF 1:200-1:1000**

**ELISA 1:10000**

**Not yet tested in other applications.**

### | Storage

**Storage\*** -15°C to -25°C/1 year(Do not lower than -25°C)

**Formulation** Liquid in PBS containing 50% glycerol, 0.5% BSA and 0.02% sodium azide.

### | Basic Information

**Clonality** Monoclonal

### | Immunogen Information

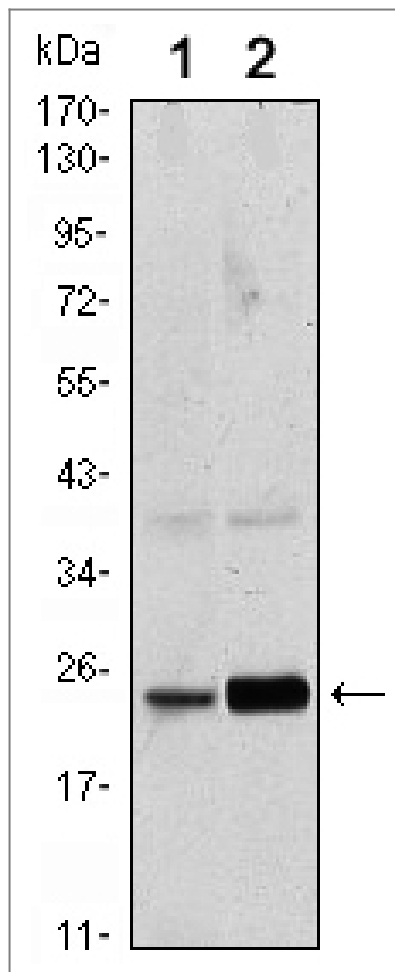
**Immunogen** Purified recombinant fragment of human Rab 10 expressed in E. Coli.

**Specificity** Rab 10 Monoclonal Antibody detects endogenous levels of Rab 10 protein.

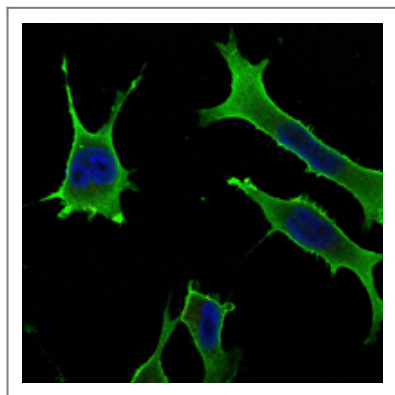
### | Target Information

Gene name	RAB10		
Protein Name	Ras-related protein Rab-10		
	Organism	Gene ID	UniProt ID
	Human	<a href="#">10890</a> ;	<a href="#">P61026</a> ;
	Mouse	<a href="#">19325</a> ;	<a href="#">P61027</a> ;
Cellular Localization	Cytoplasmic vesicle membrane ; Lipid-anchor ; Cytoplasmic side . Golgi apparatus membrane . Golgi apparatus, trans-Golgi network membrane . Endosome membrane . Recycling endosome membrane . Cytoplasmic vesicle, phagosome membrane . Cytoplasm, cytoskeleton, cilium basal body . Endoplasmic reticulum membrane . Cytoplasm, perinuclear region . Associates with SLC2A4/GLUT4 storage vesicles (PubMed:22908308). Localizes to the base of the cilium when phosphorylated by LRRK2 on Thr-73 (PubMed:20576682, PubMed:30398148). Transiently associates with phagosomes (By similarity). Localizes to the endoplasmic reticulum at domains of new tubule growth (PubMed:23263280). .		
Tissue specificity	Expressed in the hippocampus (PubMed:29562525). Expressed in neutrophils (at protein level) (PubMed:29127255). Expressed in the testis (at protein level) (PubMed:28067790).		
Function	Function:May be involved in vesicular trafficking and neurotransmitter release.,similarity:Belongs to the small GTPase superfamily. Rab family.,		

| Validation Data



Western Blot analysis using Rab 10 Monoclonal Antibody against HeLa (1) and NIH/3T3 (2) cell lysate.



Immunofluorescence analysis of LOVO cells using Rab 10 Monoclonal Antibody (green). Blue: DRAQ5 fluorescent DNA dye.

## Contact information

Orders: [order.cn@immunoway.com](mailto:order.cn@immunoway.com)  
 Support: [support.cn@immunoway.com](mailto:support.cn@immunoway.com)  
 Telephone: 400-8787-807(China)  
 Website: <http://www.immunoway.com.cn>  
 Address: 2200 Ringwood Ave San Jose, CA 95131 USA



Please scan the QR code to access additional product information:  
**Rab 10 Mouse mAb**