

## PRK2 Mouse mAb

CatalogNo: YM0534

### Key Features

#### Host Species

- Mouse

#### Reactivity

- Human, Mouse, Rat, Monkey

#### Applications

- WB, IHC, IF, FC, ELISA

#### MW

- 112kD (Calculated)

### Storage

**Storage\*** -15°C to -25°C/1 year (Do not lower than -25°C)

**Formulation** Liquid in PBS containing 50% glycerol, 0.5% BSA and 0.02% sodium azide.

### Recommended Dilution Ratios

**WB 1:500-1:2000**

**IHC 1:200-1:1000**

**Flow Cyt 1:200-1:400**

**ELISA 1:10000**

**IF 1:50-200**

### Basic Information

**Clonality** Monoclonal

**Clone Number** 4C2

### Immunogen Information

**Immunogen** Purified recombinant fragment of human PRK2 expressed in E. Coli.

**Specificity** PRK2 Monoclonal Antibody detects endogenous levels of PRK2 protein.

## Target Information

**Gene name** PKN2

**Protein Name** Serine/threonine-protein kinase N2

Organism	Gene ID	UniProt ID
Human	<a href="#">5586;</a>	<a href="#">Q16513;</a>
Mouse	<a href="#">109333;</a>	<a href="#">Q8BWW9;</a>
Rat		<a href="#">O08874;</a>

### Cellular Localization

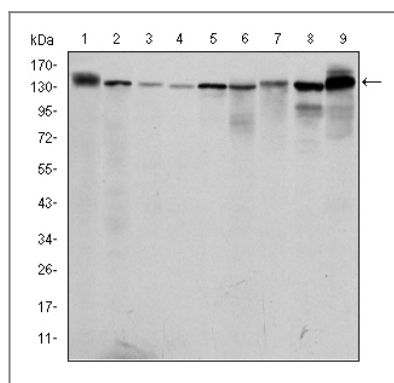
Cytoplasm . Nucleus . Membrane . Cell projection, lamellipodium . Cytoplasm, cytoskeleton . Cleavage furrow . Midbody . Cell junction . Colocalizes with PTPN13 in lamellipodia-like structures, regions of large actin turnover. Accumulates during telophase at the cleavage furrow and concentrates finally around the midbody in cytokinesis. Recruited to nascent cell-cell contacts at the apical surface of cells. In the course of viral infection, colocalizes with HCV NS5B at perinuclear region in the cytoplasm. .

**Tissue specificity** Ubiquitous. Expressed in numerous tumor cell lines, especially in bladder tumor cells.

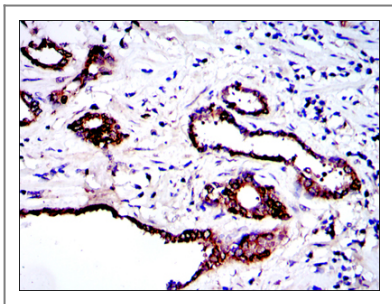
### Function

Catalytic activity:ATP + a protein = ADP + a phosphoprotein.,Domain:The C1 domain does not bind the diacylglycerol (DAG).,enzyme regulation:Activated by lipids, particularly cardiolipin and to a lesser extent by other acidic phospholipids and unsaturated fatty acids. Two specific sites, Thr-816 (activation loop of the kinase domain) and Thr-958 (turn motif), need to be phosphorylated for its full activation.,Function:Exhibits a preference for highly basic protein substrates.,PTM:Activated by limited proteolysis with trypsin.,PTM:Autophosphorylated.,similarity:Belongs to the protein kinase superfamily.,similarity:Belongs to the protein kinase superfamily. AGC Ser/Thr protein kinase family. PKC subfamily.,similarity:Contains 1 AGC-kinase C-terminal domain.,similarity:Contains 1 C2 domain.,similarity:Contains 1 protein kinase domain.,similarity:Contains 3 REM (Hr1) repeats.,

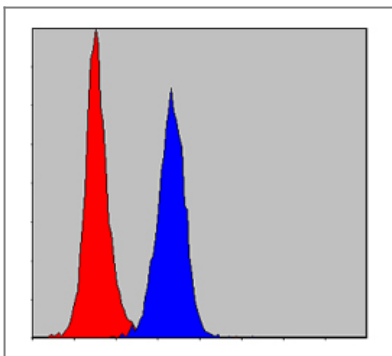
## Validation Data



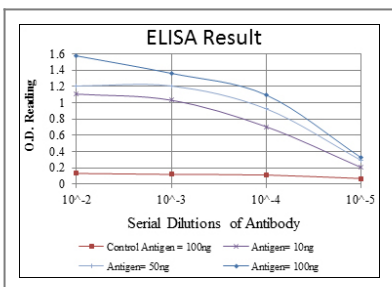
Western Blot analysis using PRK2 Monoclonal Antibody against PC-12 (1), Cos7 (2), K562 (3), Jurkat (4), HeLa (5), A431 (6), C6 (7), NIH/3T3 (8) and HEK293 (9) cell lysate.



Immunohistochemistry analysis of paraffin-embedded prostate tissues with DAB staining using PRK2 Monoclonal Antibody.



Flow cytometric analysis of NIH/3T3 cells using PRK2 Monoclonal Antibody (blue) and negative control (red).



## Contact information

Orders: order.cn@immunoway.com  
Support: support.cn@immunoway.com  
Telephone: 400-8787-807(China)  
Website: <http://www.immunoway.com.cn>  
Address: 2200 Ringwood Ave San Jose, CA 95131 USA



Please scan the QR code to access additional product information:  
**PRK2 Mouse mAb**

For Research Use Only. Not for Use in Diagnostic Procedures.

[Antibody](#) | [ELISA Kits](#) | [Protein](#) | [Reagents](#)