

p38 β Mouse mAb

CatalogNo: YM0498

| Key Features

Host Species

- Mouse

Reactivity

- Human

Applications

- WB,ELISA

MW

- 41kD (Calculated)

| Recommended Dilution Ratios

WB 1:500-1:2000

ELISA 1:10000

Not yet tested in other applications.

| Storage

Storage*

-15°C to -25°C/1 year(Do not lower than -25°C)

Formulation

Liquid in PBS containing 50% glycerol, 0.5% BSA and 0.02% sodium azide.

| Basic Information

Clonality

Monoclonal

| Immunogen Information

Immunogen

Purified recombinant fragment of p38 β (aa251-363) expressed in E. Coli.

Specificity

p38 β Monoclonal Antibody detects endogenous levels of p38 β protein.

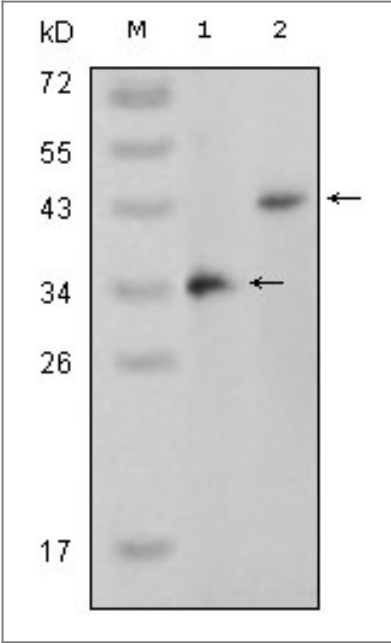
| Target Information

Gene name

MAPK11

Protein Name	Mitogen-activated protein kinase 11		
	Organism	Gene ID	UniProt ID
	Human	5600;	Q15759;
	Mouse		Q9WUI1;
Cellular Localization	Cytoplasm . Nucleus .		
Tissue specificity	Highest levels in the brain and heart. Also expressed in the placenta, lung, liver, skeletal muscle, kidney and pancreas.		
Function	Catalytic activity:ATP + a protein = ADP + a phosphoprotein.,cofactor:Magnesium.,Domain:The TXY motif contains the threonine and tyrosine residues whose phosphorylation activates the MAP kinases.,enzyme regulation:Activated by phosphorylation on threonine and tyrosine by MKK6. Inhibited by pyridinyl-imidazole related compounds.,Function:Kinase involved in a signal transduction pathway that is activated by changes in the osmolarity of the extracellular environment, by cytokines, or by environmental stress. Phosphorylates preferentially transcription factor ATF2.,PTM:Dually phosphorylated on Thr-180 and Tyr-182, which activates the enzyme.,similarity:Belongs to the protein kinase superfamily. CMGC Ser/Thr protein kinase family. MAP kinase subfamily.,similarity:Contains 1 protein kinase domain.,tissue specificity:Highest levels in the brain and heart. Also expressed in the placenta, lung, liver, skeletal muscle, kidney and pancreas.,		

Validation Data



Western Blot analysis using p38β Monoclonal Antibody against truncated p38β recombinant protein (1) and full-length p38β (aa1-363)-pcDNA3.1 transfected CHO-K1 cell lysate (2).

Contact information

Orders: order.cn@immunoway.com
Support: support.cn@immunoway.com
Telephone: 400-8787-807(China)
Website: <http://www.immunoway.com.cn>
Address: 2200 Ringwood Ave San Jose, CA 95131 USA



Please scan the QR code
to access additional
product information:
p38 β Mouse mAb

For Research Use Only. Not for Use in Diagnostic Procedures.

[Antibody](#) | [ELISA Kits](#) | [Protein](#) | [Reagents](#)