

p14ARF Mouse mAb

CatalogNo: YM0494 Orthogonal Validated 

Key Features

Host Species

- Mouse

Reactivity

- Human, Mouse, Rat

Applications

- WB, IHC, IF, ELISA

MW

- 14kD (Calculated)

Storage

Storage* -15°C to -25°C/1 year (Do not lower than -25°C)

Formulation Liquid in PBS containing 50% glycerol, 0.5% BSA and 0.02% sodium azide.

Recommended Dilution Ratios

WB 1:500-1:2000

IHC 1:200-1:1000

ELISA 1:10000

IF 1:50-200

Basic Information

Clonality Monoclonal

Clone Number 9G5

Immunogen Information

Immunogen Purified recombinant fragment of p14ARF expressed in E. Coli.

Specificity p14ARF Monoclonal Antibody detects endogenous levels of p16 protein.

| Target Information

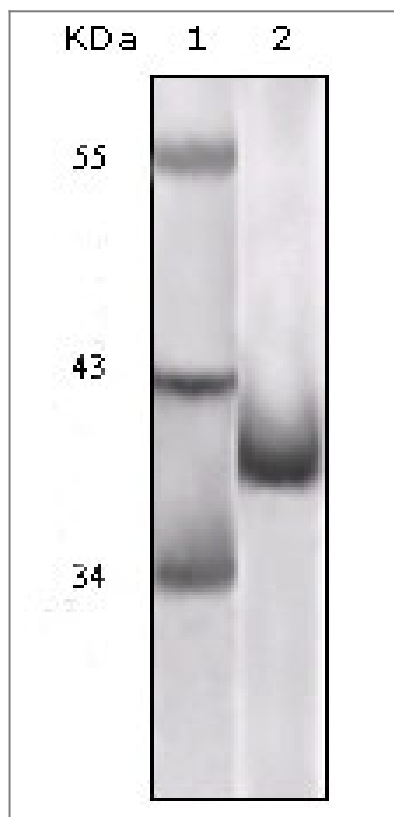
Gene name CDKN2A

Protein Name Cyclin-dependent kinase inhibitor 2A isoform 4

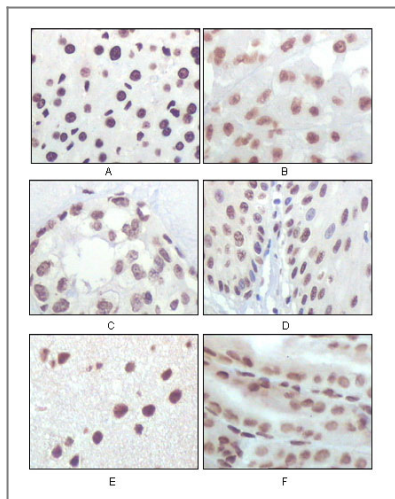
Organism	Gene ID	UniProt ID
Human	1029;	Q8N726;
Mouse	12578;	Q64364;
Rat		Q8QZZ9;

Cellular Localization Nucleus, nucleolus . Nucleus, nucleoplasm .; [Isoform smARF]: Mitochondrion .

| Validation Data



Western Blot analysis using p16 Monoclonal Antibody against truncated p16 recombinant protein.



Immunohistochemistry analysis of paraffin-embedded rat liver tissue (A), human brain tumor (B), breast cancer (C), esophageal epithelium tissue (D), mouse brain tissue (E) and stomach tissue (F), showing nuclear localization with DAB staining using p16 Mon

Contact information

Orders: order.cn@immunoway.com
Support: support.cn@immunoway.com
Telephone: 400-8787-807(China)
Website: <http://www.immunoway.com.cn>
Address: 2200 Ringwood Ave San Jose, CA 95131 USA



Please scan the QR code to access additional product information:
p14ARF Mouse mAb

For Research Use Only. Not for Use in Diagnostic Procedures.

[Antibody](#) | [ELISA Kits](#) | [Protein](#) | [Reagents](#)