

NPT1 Mouse mAb

CatalogNo: YM0481

Key Features

Host Species

- Mouse

Reactivity

- Human

Applications

- WB, ELISA

MW

- 51kD (Calculated)

Recommended Dilution Ratios

WB 1:500-1:2000

ELISA 1:10000

Not yet tested in other applications.

Storage

Storage* -15°C to -25°C/1 year (Do not lower than -25°C)

Formulation Liquid in PBS containing 50% glycerol, 0.5% BSA and 0.02% sodium azide.

Basic Information

Clonality Monoclonal

Immunogen Information

Immunogen Purified recombinant fragment of NPT1 expressed in E. Coli.

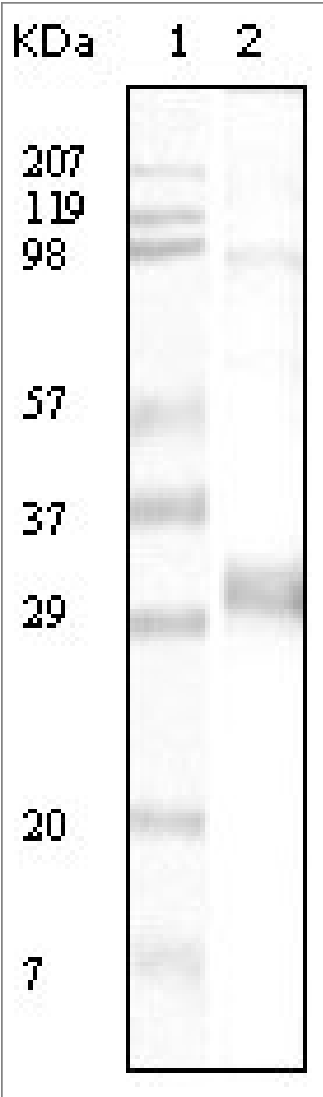
Specificity NPT1 Monoclonal Antibody detects endogenous levels of NPT1 protein.

Target Information

Gene name SLC17A1

Protein Name	Sodium-dependent phosphate transport protein 1		
	Organism	Gene ID	UniProt ID
	Human	6568 ;	Q14916 ;
	Mouse		Q61983 ;
Cellular Localization	Apical cell membrane ; Multi-pass membrane protein .		
Tissue specificity	Expressed in kidney cortex, liver and brain but not in other tissues.		
Function	Caution:It is uncertain whether Met-1 or Met-3 is the initiator.,Function:Important for the resorption of phosphate by the kidney. May be involved in actively transporting phosphate into cells via Na(+) cotransport in the renal brush border membrane.,similarity:Belongs to the major facilitator superfamily. Sodium/anion cotransporter family.,subunit:Interacts with PDZK1.,tissue specificity:Expressed in kidney cortex, liver and brain but not in other tissues.,		

| Validation Data



Western Blot analysis using NPT1 Monoclonal Antibody against truncated NPT1 recombinant protein.

| Contact information

Orders: order.cn@immunoway.com
Support: support.cn@immunoway.com
Telephone: 400-8787-807(China)
Website: <http://www.immunoway.com.cn>
Address: 2200 Ringwood Ave San Jose, CA 95131 USA



Please scan the QR code
to access additional
product information:
NPT1 Mouse mAb

For Research Use Only. Not for Use in Diagnostic Procedures.

[Antibody](#) | [ELISA Kits](#) | [Protein](#) | [Reagents](#)