

NOK Mouse mAb

CatalogNo: YM0479

Key Features

Host Species

- Mouse

Reactivity

- Human

Applications

- WB,IHC,IF,ELISA

MW

- 48kD (Calculated)

Recommended Dilution Ratios

WB 1:500-1:2000

IHC 1:200-1:1000

ELISA 1:10000

IF 1:50-200

Storage

Storage*

-15°C to -25°C/1 year(Do not lower than -25°C)

Formulation

Liquid in PBS containing 50% glycerol, 0.5% BSA and 0.02% sodium azide.

Basic Information

Clonality

Monoclonal

Immunogen Information

Immunogen

Purified recombinant fragment of NOK expressed in E. Coli.

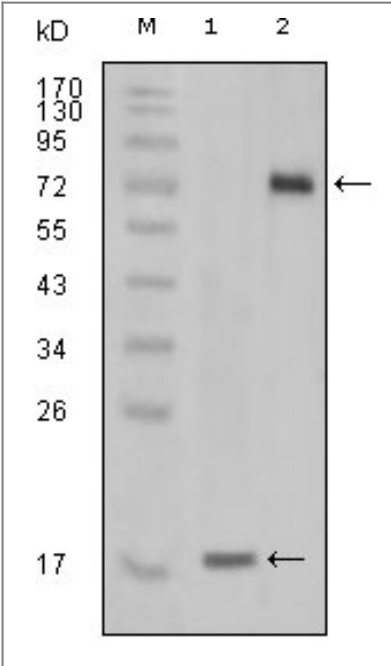
Specificity

NOK Monoclonal Antibody detects endogenous levels of NOK protein.

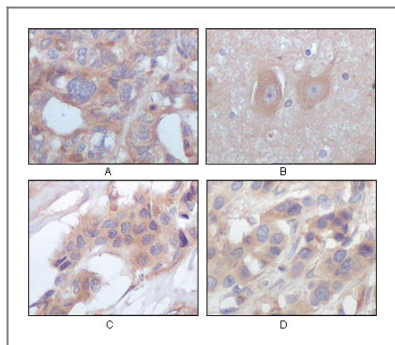
Target Information

| | | | |
|-----------------------|---|-------------------------|--------------------------|
| Gene name | STYK1 NOK | | |
| Protein Name | Tyrosine-protein kinase STYK1 | | |
| | Organism | Gene ID | UniProt ID |
| | Human | 55359 ; | Q6J9G0 ; |
| Cellular Localization | Membrane ; Single-pass membrane protein . | | |
| Tissue specificity | Widely expressed. Highly expressed in brain, placenta and prostate. Expressed in tumor cells such as hepatoma cells L-02, cervix carcinoma cells HeLa, ovary cancer cells Ho8910 and chronic myelogenous leukemia cells K-562, but not in other tumor cells such as epidermoid carcinoma (A-431). Undetectable in most normal lung tissues, widely expressed in lung cancers. | | |
| Function | Catalytic activity:ATP + a [protein]-L-tyrosine = ADP + a [protein]-L-tyrosine phosphate.,Function:Probable tyrosine protein-kinase, which has strong transforming capabilities on a variety of cell lines. When overexpressed, it can also induce tumor cell invasion as well as metastasis in distant organs. May act by activating both MAP kinase and phosphatidylinositol 3'-kinases (PI3K) pathways.,similarity:Belongs to the protein kinase superfamily. Tyr protein kinase family.,similarity:Contains 1 protein kinase domain.,tissue specificity:Widely expressed. Highly expressed in brain, placenta and prostate. Expressed in tumor cells such as hepatoma cells LO2, cervix carcinoma cells HeLa, ovary cancer cells Ho8910 and chronic myelogenous leukemia cells K562, but not in other tumor cells such as epidermoid carcinoma (A431). Undetectable in most normal lung tissues, widely expressed in lung cancers., | | |

| Validation Data



Western Blot analysis using NOK Monoclonal Antibody against truncated STYK1 recombinant protein(1) and STYK1 (aa47-422)-hlgGFc transfected CHO-K1 cell lysate (2).



Immunohistochemistry analysis of paraffin-embedded human ovary carcinoma (A), normal cerebrum tissues (B), breast infiltrating carcinoma (C) and breast infiltrating carcinoma (D), showing cytoplasmic localization with DAB staining using NOK Monoclonal Ant

Contact information

Orders: order.cn@immunoway.com
 Support: support.cn@immunoway.com
 Telephone: 400-8787-807(China)
 Website: <http://www.immunoway.com.cn>
 Address: 2200 Ringwood Ave San Jose, CA 95131 USA



Please scan the QR code
to access additional
product information:
NOK Mouse mAb

For Research Use Only. Not for Use in Diagnostic Procedures.

[Antibody](#) | [ELISA Kits](#) | [Protein](#) | [Reagents](#)