

## MEK Kinase-2 Mouse mAb

CatalogNo: YM0434

### | Key Features

#### Host Species

- Mouse

#### Reactivity

- Human

#### Applications

- WB,IF,ELISA

#### MW

- 70kD (Calculated)

### | Recommended Dilution Ratios

**WB 1:500-1:2000**

**IF 1:200-1:1000**

**ELISA 1:10000**

**Not yet tested in other applications.**

### | Storage

#### Storage\*

-15°C to -25°C/1 year(Do not lower than -25°C)

#### Formulation

Liquid in PBS containing 50% glycerol, 0.5% BSA and 0.02% sodium azide.

### | Basic Information

#### Clonality

Monoclonal

### | Immunogen Information

#### Immunogen

Purified recombinant fragment of human MEK Kinase-2 expressed in E. Coli.

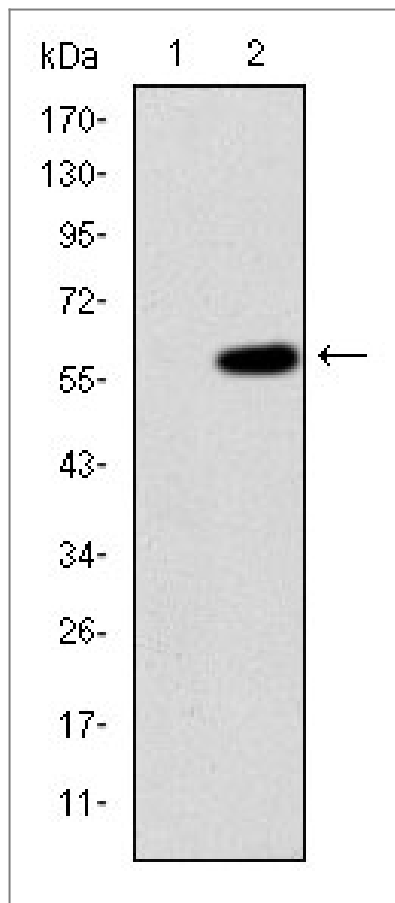
#### Specificity

MEK Kinase-2 Monoclonal Antibody detects endogenous levels of MEK Kinase-2 protein.

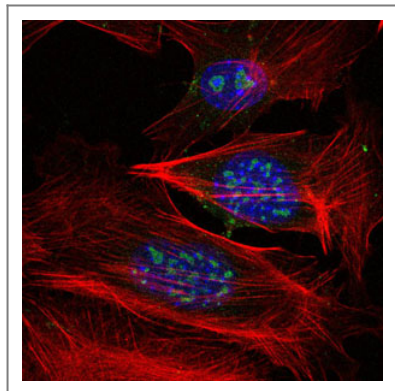
### | Target Information

Gene name	MAP3K2		
Protein Name	Mitogen-activated protein kinase kinase kinase 2		
	Organism	Gene ID	UniProt ID
	Human	<a href="#">10746</a> ;	<a href="#">Q9Y2U5</a> ;
	Mouse		<a href="#">Q61083</a> ;
Cellular Localization	Cytoplasm . Nucleus . Upon EGF stimulation, translocates into the nucleus.		
Tissue specificity	Brain,Platelet,T-cell,Teratocarcinoma,Whole embryo,		
Function	Catalytic activity:ATP + a protein = ADP + a phosphoprotein.,cofactor:Magnesium.,enzyme regulation:Activated by phosphorylation on Thr-524.,Function:Component of a protein kinase signal transduction cascade. Regulates the JNK and ERK5 pathways by phosphorylating and activating MAP2K5 and MAP2K7 (By similarity). Plays a role in caveolae kiss-and-run dynamics.,PTM:Autophosphorylated.,similarity:Belongs to the protein kinase superfamily. STE Ser/Thr protein kinase family. MAP kinase kinase kinase subfamily.,similarity:Contains 1 OPR domain.,similarity:Contains 1 protein kinase domain.,subcellular location:Upon EGF stimulation, translocates into the nucleus.,subunit:Binds both upstream activators and downstream substrates in multimolecular complexes.,		

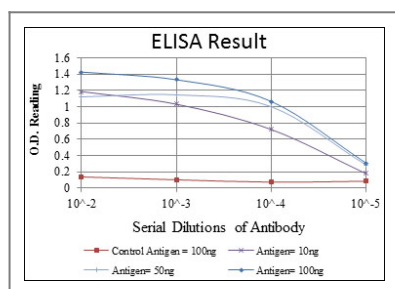
## | Validation Data



Western Blot analysis using MEK Kinase-2 Monoclonal Antibody against HEK293 (1) and MAP3K2-hlgGfC transfected HEK293 (2) cell lysate.



Immunofluorescence analysis of 3T3-L1 cells using MEK Kinase-2 Monoclonal Antibody (green). Blue: DRAQ5 fluorescent DNA dye. Red: Actin filaments have been labeled with Alexa Fluor-555 phalloidin.



## Contact information

Orders: order.cn@immunoway.com  
Support: support.cn@immunoway.com  
Telephone: 400-8787-807(China)  
Website: <http://www.immunoway.com.cn>  
Address: 2200 Ringwood Ave San Jose, CA 95131 USA



Please scan the QR code  
to access additional  
product information:  
**MEK Kinase-2  
Mouse mAb**

---

For Research Use Only. Not for Use in Diagnostic Procedures.

[Antibody](#) | [ELISA Kits](#) | [Protein](#) | [Reagents](#)