

## Mcl-1 Mouse mAb

CatalogNo: YM0430

### | Key Features

#### Host Species

- Mouse

#### Reactivity

- Human

#### Applications

- WB,IHC,IF,ELISA

#### MW

- 40kD in human,39kD in mouse and rat (Observed)

### | Recommended Dilution Ratios

**WB 1:500-1:2000**

**IHC 1:200-1:1000**

**IF 1:200-1:1000**

**ELISA 1:10000**

**Not yet tested in other applications.**

### | Storage

**Storage\*** -15°C to -25°C/1 year(Do not lower than -25°C)

**Formulation** Liquid in PBS containing 50% glycerol, 0.5% BSA and 0.02% sodium azide.

### | Basic Information

**Clonality** Monoclonal

**Clone Number** 19A5

### | Immunogen Information

**Immunogen** Purified recombinant fragment of human MCL-1 expressed in E. Coli.

**Specificity** Mcl-1 Monoclonal Antibody detects endogenous levels of Mcl-1 protein.

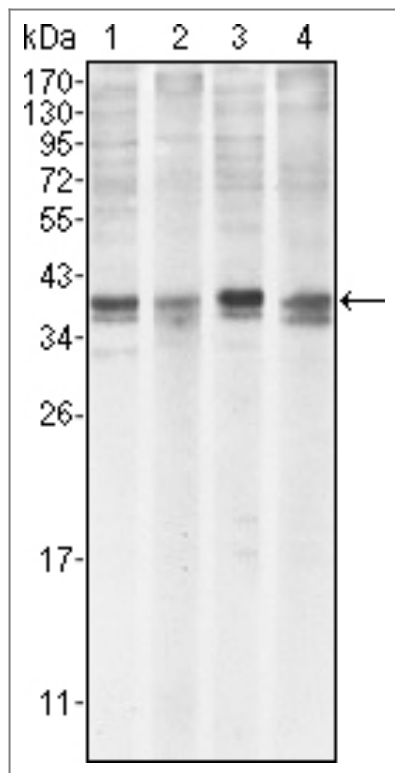
---

## | Target Information

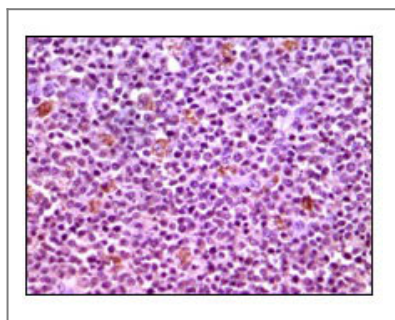
Gene name	MCL1		
Protein Name	Induced myeloid leukemia cell differentiation protein Mcl-1		
	Organism	Gene ID	UniProt ID
	Human	<a href="#">4170</a> ;	<a href="#">Q07820</a> ;
	Mouse	<a href="#">17210</a> ;	<a href="#">P97287</a> ;
Cellular Localization	Membrane ; Single-pass membrane protein . Cytoplasm. Mitochondrion. Nucleus, nucleoplasm. Cytoplasmic, associated with mitochondria.		
Tissue specificity	Ewing sarcoma,Mammary gland,Myeloid leukemia cell,Neuroblastoma,Placenta,Th		
Function	Function:Involved in the regulation of apoptosis versus cell survival, and in the maintenance of viability but not of proliferation. Mediates its effects by interactions with a number of other regulators of apoptosis. Isoform 1 inhibits apoptosis while isoform 2 promotes it.,induction:Expression increases early during phorbol-ester induced differentiation along the monocyte/macrophage pathway in myeloid leukemia cell lines ML-1. Rapidly up-regulated by CSF2 in ML-1 cells. Up-regulated by heat-shock induced differentiation. Expression increases early during retinoic acid-induced differentiation.,PTM:Cleaved by CASP3 during apoptosis. In intact cells cleavage occurs preferentially after Asp-127, yielding a pro-apoptotic 28 kDa C-terminal fragment.,PTM:Phosphorylated on Thr-163. Treatment with taxol or okadaic acid induces phosphorylation on additional sites.,PTM:Rapidly degraded in the absence of phosphorylation on Thr-163 in the PEST region.,similarity:Belongs to the Bcl-2 family.,subcellular location:Cytoplasmic, associated with mitochondria.,subunit:Interacts with BAD, BOK, BIK and BFM (By similarity). Interacts with PMAIP1. Isoform 1 interacts with BAX, BAK1, TPT1 and BCL2L11. Heterodimer of isoform 1 and isoform 2. Homodimers of isoform 1 or isoform 2 are not detected. Isoform 2 does not interact with pro-apoptototic BCL2-related proteins.,		

---

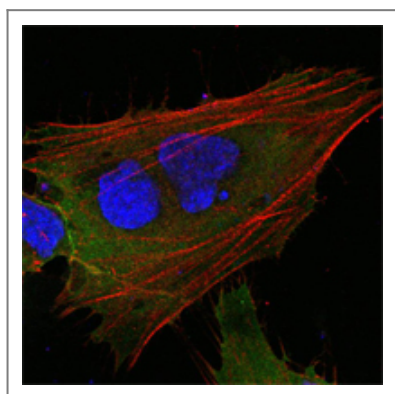
## | Validation Data



Western Blot analysis using Mcl-1 Monoclonal Antibody against HeLa (1), BCBL-1 (2), Jurkat (3) and HL60 (4) cell lysate.



Immunohistochemistry analysis of paraffin-embedded human lymphnode tissues with DAB staining using Mcl-1 Monoclonal Antibody.



Confocal immunofluorescence analysis of HepG2 cells using Mcl-1 Monoclonal Antibody (green). Red: Actin filaments have been labeled with DY-554 phalloidin. Blue: DRAQ5 fluorescent DNA dye.

## | Contact information

Orders: order.cn@immunoway.com  
Support: support.cn@immunoway.com  
Telephone: 400-8787-807(China)  
Website: <http://www.immunoway.com.cn>  
Address: 2200 Ringwood Ave San Jose, CA 95131 USA



Please scan the QR code  
to access additional  
product information:  
**Mcl-1 Mouse mAb**

