

LAL Mouse mAb

CatalogNo: YM0410

| Key Features

Host Species

- Mouse

Reactivity

- Human

Applications

- WB,ELISA

MW

- 45kD (Calculated)

| Recommended Dilution Ratios

WB 1:500-1:2000

ELISA 1:10000

Not yet tested in other applications.

| Storage

Storage*

-15°C to -25°C/1 year(Do not lower than -25°C)

Formulation

Liquid in PBS containing 50% glycerol, 0.5% BSA and 0.02% sodium azide.

| Basic Information

Clonality

Monoclonal

| Immunogen Information

Immunogen

Purified recombinant fragment of LAL expressed in E. Coli.

Specificity

LAL Monoclonal Antibody detects endogenous levels of LAL protein.

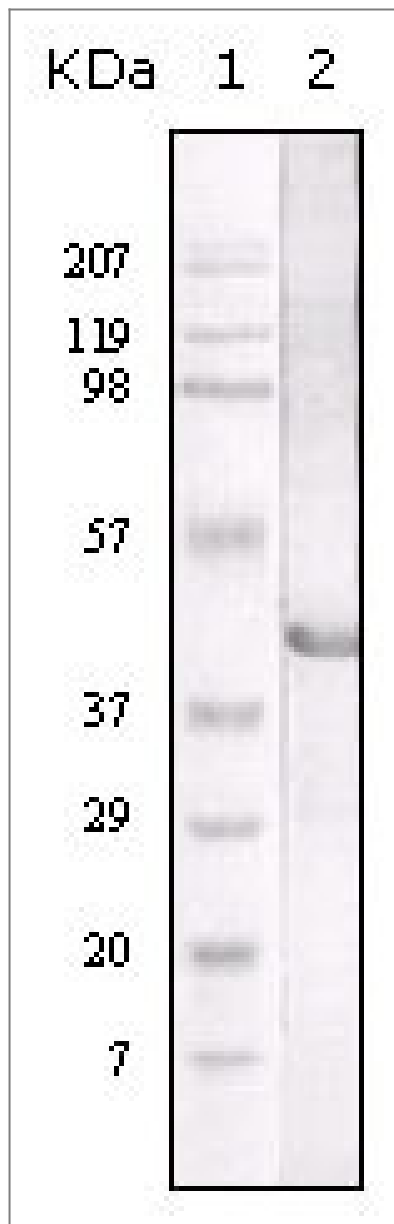
| Target Information

Gene name

LIPA

Protein Name	Lysosomal acid lipase/cholesteryl ester hydrolase		
	Organism	Gene ID	UniProt ID
	Human	3988 ;	P38571 ;
	Mouse		Q9Z0M5 ;
Cellular Localization	Lysosome .		
Tissue specificity	Most abundantly expressed in brain, lung, kidney and mammary gland, a moderate expression seen in placenta and expressed at low levels in the liver and heart.		
Function	<p>Catalytic activity:A steryl ester + H(2)O = a sterol + a fatty acid.,Disease:Defects in LIPA are the cause of cholesteryl ester storage disease (CESD) [MIM:278000]. CESD is a mild manifestation of LIPA deficiency, leading to the accumulation of cholesteryl esters and triglycerides in most tissues of the body. It is characterized by late-onset.,Disease:Defects in LIPA are the cause of Wolman disease (WOD) [MIM:278000]. WOD is a severe manifestation of LIPA deficiency, leading to the accumulation of cholesteryl esters and triglycerides in most tissues of the body. WOD occurs in infancy and is nearly always fatal before the age of 1 year.,Function:Crucial for the intracellular hydrolysis of cholesteryl esters and triglycerides that have been internalized via receptor-mediated endocytosis of lipoprotein particles. Important in mediating the effect of LDL (low density lipoprotein) uptake on suppression of hydroxymethylglutaryl-CoA reductase and activation of endogenous cellular cholesteryl ester formation.,similarity:Belongs to the AB hydrolase superfamily. Lipase family.,</p>		

| Validation Data



Western Blot analysis using LAL Monoclonal Antibody against LAL recombinant protein.

Contact information

Orders: order.cn@immunoway.com
 Support: support.cn@immunoway.com
 Telephone: 400-8787-807(China)
 Website: <http://www.immunoway.com.cn>
 Address: 2200 Ringwood Ave San Jose, CA 95131 USA



Please scan the QR code to access additional product information:
LAL Mouse mAb