

IL-6 Mouse mAb

CatalogNo: YM0372

Key Features

Host Species

- Mouse

Reactivity

- Human

Applications

- WB, ELISA

MW

- 24kD (Calculated)

Recommended Dilution Ratios

WB 1:500-1:2000

ELISA 1:10000

Not yet tested in other applications.

Storage

Storage* -15°C to -25°C/1 year (Do not lower than -25°C)

Formulation Liquid in PBS containing 50% glycerol, 0.5% BSA and 0.02% sodium azide.

Basic Information

Clonality Monoclonal

Clone Number 20H9

Immunogen Information

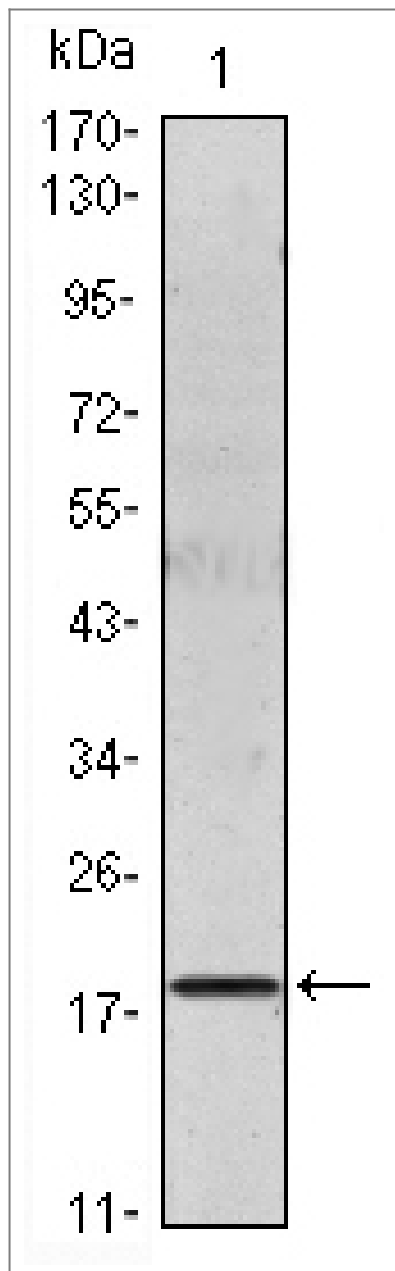
Immunogen Purified recombinant fragment of human IL-6 expressed in E. Coli.

Specificity IL-6 Monoclonal Antibody detects endogenous levels of IL-6 protein.

Target Information

Gene name	IL6		
Protein Name	Interleukin-6		
	Organism	Gene ID	UniProt ID
	Human	3569 ;	P05231 ;
	Mouse		P08505 ;
Cellular Localization	Secreted .		
Tissue specificity	Produced by skeletal muscle.		
Function	<p>Disease:At least 1 polymorphism in the IL6 gene renders HIV-infected men susceptible to Kaposi sarcoma [MIM:148000]. Kaposi sarcoma is a sarcoma of spindle cells mixed with angiomatous tissue. A relatively rare malignant skin tumor that results in multifocal purplish coloured papules or plaques that eventually form nodules. Most commonly seen in patients who suffer from AIDS.,Disease:Genetic variations in IL6 are associated with susceptibility to systemic juvenile rheumatoid arthritis [MIM:604302]. Systemic juvenile rheumatoid arthritis is juvenile chronic arthritis associated with severe, debilitating, extraarticular features, and occasionally fatal complications. Despite medical treatment, many children still experience early joint destruction, necessitating surgical replacement.,Function:IL-6 is a cytokine with a wide variety of biological functions: it plays an essential role in the final differentiation of B-cells into Ig-secreting cells, it induces myeloma and plasmacytoma growth, it induces nerve cells differentiation, in hepatocytes it induces acute phase reactants.,online information:Interleukin-6 entry,online information:The Singapore human mutation and polymorphism database,polymorphism:Genetic variations in IL6 may be correlated with bone mineral density (BMD). Low BMD is a risk factor for osteoporotic fracture. Osteoporosis is characterized by reduced bone mineral density, disruption of bone microarchitecture, and the alteration of the amount and variety of non-collagenous proteins in bone. Osteoporotic bones are more at risk of fracture.,PTM:N- and O-glycosylated.,similarity:Belongs to the IL-6 superfamily.,</p>		

| Validation Data



Western Blot analysis using IL-6 mouse mAb against IL-6 recombinant protein.

Contact information

Orders: order.cn@immunoway.com
 Support: support.cn@immunoway.com
 Telephone: 400-8787-807(China)
 Website: <http://www.immunoway.com.cn>
 Address: 2200 Ringwood Ave San Jose, CA 95131 USA



Please scan the QR code
to access additional
product information:
IL-6 Mouse mAb