

FGFR-4 Mouse mAb

CatalogNo: YM0267

Key Features

Host Species

- Mouse

Reactivity

- Human

Applications

- WB,IF,ELISA

MW

- 88kD (Calculated)

Recommended Dilution Ratios

WB 1:500-1:2000

IF 1:200-1:1000

ELISA 1:10000

Not yet tested in other applications.

Storage

Storage*

-15°C to -25°C/1 year(Do not lower than -25°C)

Formulation

Liquid in PBS containing 50% glycerol, 0.5% BSA and 0.02% sodium azide.

Basic Information

Clonality

Monoclonal

Immunogen Information

Immunogen

Purified recombinant extracellular fragment of human FGFR-4 fused with hIgGfc tag expressed in HEK293 cell line.

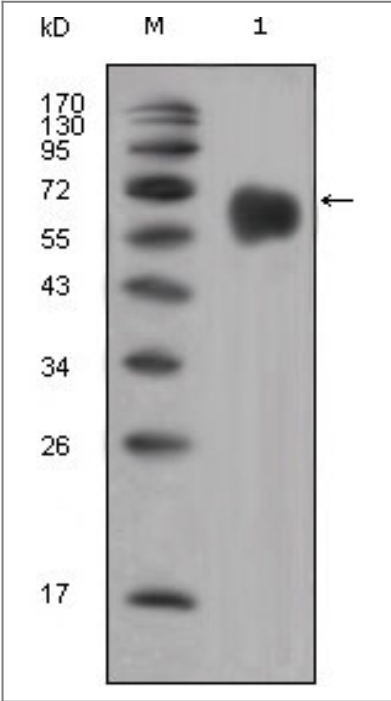
Specificity

FGFR-4 Monoclonal Antibody detects endogenous levels of FGFR-4 protein.

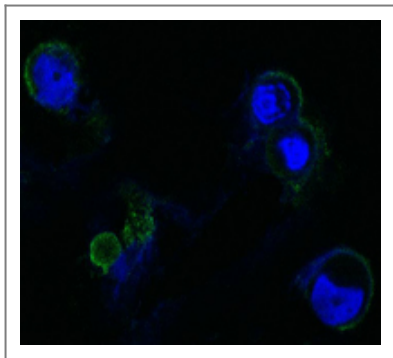
Target Information

Gene name	FGFR4		
Protein Name	Fibroblast growth factor receptor 4		
	Organism	Gene ID	UniProt ID
	Human	2264 ;	P22455 ;
	Mouse		Q03142 ;
Cellular Localization	Cell membrane; Single-pass type I membrane protein. Endosome. Endoplasmic reticulum. Internalized from the cell membrane to recycling endosomes, and from there back to the cell membrane.; [Isoform 2]: Secreted.; [Isoform 3]: Cytoplasm .		
Tissue specificity	Expressed in gastrointestinal epithelial cells, pancreas, and gastric and pancreatic cancer cell lines.		
Function	Catalytic activity:ATP + a [protein]-L-tyrosine = ADP + a [protein]-L-tyrosine phosphate.,Function:Receptor for acidic fibroblast growth factor. Does not bind to basic fibroblast growth factor. Binds FGF19.,PTM:Glycosylated (By similarity). Phosphorylated on tyrosine residue (By similarity). Phosphorylation requires the presence of a functional (phosphorylated) FGFR1 and not necessarily by means of FGFR heterodimerization.,similarity:Belongs to the protein kinase superfamily. Tyr protein kinase family.,similarity:Belongs to the protein kinase superfamily. Tyr protein kinase family. Fibroblast growth factor receptor subfamily.,similarity:Contains 1 protein kinase domain.,similarity:Contains 3 Ig-like C2-type (immunoglobulin-like) domains.,subcellular location:Isoform 2 may be secreted.,subunit:Interacts with KLB.,tissue specificity:Expressed in gastrointestinal epithelial cells, pancreas, and gastric and pancreatic cancer cell lines.,		

Validation Data



Western Blot analysis using FGFR-4 Monoclonal Antibody against extracellular domain of human FGFR-4 (aa22-369).



Confocal immunofluorescence analysis of methanol-fixed HEK293 cells trasfected with FGFR4-hlgGfC using FGFR-4 Monoclonal Antibody (green), showing membrane localization. Blue: DRAQ5 fluorescent DNA dye.

Contact information

Orders: order.cn@immunoway.com
Support: support.cn@immunoway.com
Telephone: 400-8787-807(China)
Website: <http://www.immunoway.com.cn>
Address: 2200 Ringwood Ave San Jose, CA 95131 USA



Please scan the QR code
to access additional
product information:
FGFR-4 Mouse mAb

For Research Use Only. Not for Use in Diagnostic Procedures.

[Antibody](#) | [ELISA Kits](#) | [Protein](#) | [Reagents](#)