

## ERK 3 Mouse mAb

CatalogNo: YM0246

### | Key Features

#### Host Species

- Mouse

#### Reactivity

- Human

#### Applications

- WB,FC,ELISA

#### MW

- 83kD (Calculated)

### | Recommended Dilution Ratios

**WB 1:500-1:2000**

**Flow Cyt 1:200-1:400**

**ELISA 1:10000**

**Not yet tested in other applications.**

### | Storage

#### Storage\*

-15°C to -25°C/1 year(Do not lower than -25°C)

#### Formulation

Liquid in PBS containing 50% glycerol, 0.5% BSA and 0.02% sodium azide.

### | Basic Information

#### Clonality

Monoclonal

### | Immunogen Information

#### Immunogen

Purified recombinant fragment of human ERK 3 expressed in E. Coli.

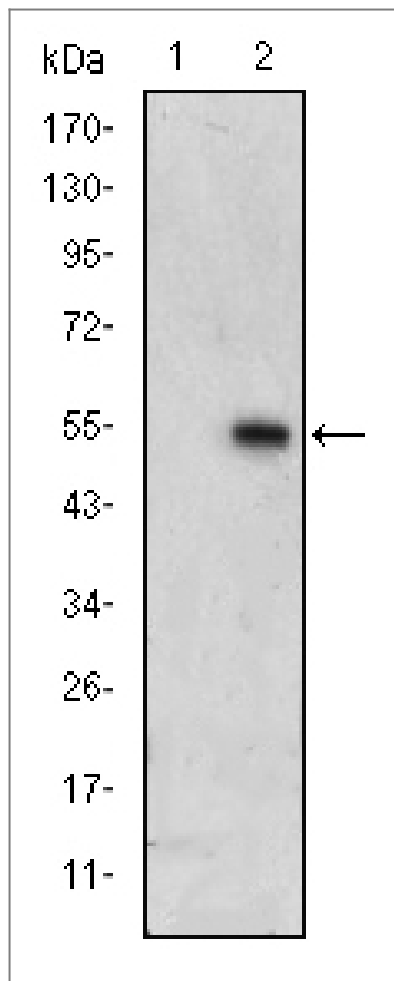
#### Specificity

ERK 3 Monoclonal Antibody detects endogenous levels of ERK 3 protein.

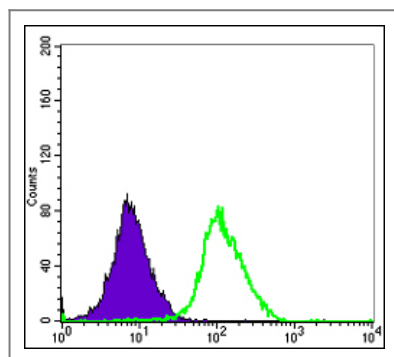
### | Target Information

Gene name	MAPK6		
Protein Name	Mitogen-activated protein kinase 6		
	Organism	Gene ID	UniProt ID
	Human	<a href="#">5597</a> ;	<a href="#">Q16659</a> ;
Cellular Localization	Cytoplasm . Nucleus . Translocates to the cytoplasm following interaction with MAPKAPK5. .		
Tissue specificity	Highest expression in the skeletal muscle, followed by the brain. Also found in heart, placenta, lung, liver, pancreas, kidney and skin fibroblasts.		
Function	Catalytic activity:ATP + a protein = ADP + a phosphoprotein.,cofactor:Magnesium.,Domain:The TXY motif contains the threonine and tyrosine residues whose phosphorylation activates the MAP kinases.,enzyme regulation:Activated by threonine and tyrosine phosphorylation.,Function:Phosphorylates microtubule-associated protein 2 (MAP2). May promote entry in the cell cycle.,PTM:Dually phosphorylated on Thr-626 and Tyr-628, which activates the enzyme.,similarity:Belongs to the protein kinase superfamily. CMGC Ser/Thr protein kinase family. MAP kinase subfamily.,similarity:Contains 1 protein kinase domain.,tissue specificity:Highest expression in the skeletal muscle, followed by the brain. Also found in heart, placenta, lung, liver, pancreas, kidney and skin fibroblasts.,		

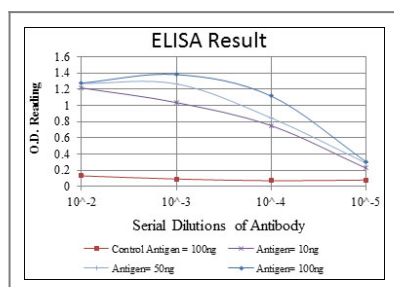
## | Validation Data



Western Blot analysis using ERK 3 Monoclonal Antibody against HEK293 (1) and ERK3-hlgFc transfected HEK293 (2) cell lysate.



Flow cytometric analysis of Hela cells using ERK 3 Monoclonal Antibody (green) and negative control (purple).



## Contact information

Orders: order.cn@immunoway.com  
Support: support.cn@immunoway.com  
Telephone: 400-8787-807(China)  
Website: <http://www.immunoway.com.cn>  
Address: 2200 Ringwood Ave San Jose, CA 95131 USA



Please scan the QR code  
to access additional  
product information:  
**ERK 3 Mouse mAb**

---

For Research Use Only. Not for Use in Diagnostic Procedures.

[Antibody](#) | [ELISA Kits](#) | [Protein](#) | [Reagents](#)