

Emt Mouse mAb

CatalogNo: YM0218

Key Features

Host Species

- Mouse

Reactivity

- Human

Applications

- WB,IF,FC,ELISA

MW

- 72kD (Calculated)

Recommended Dilution Ratios

WB 1:500-1:2000

IF 1:200-1:1000

Flow Cyt 1:200-1:400

ELISA 1:10000

Not yet tested in other applications.

Storage

Storage* -15°C to -25°C/1 year(Do not lower than -25°C)

Formulation Liquid in PBS containing 50% glycerol, 0.5% BSA and 0.02% sodium azide.

Basic Information

Clonality Monoclonal

Immunogen Information

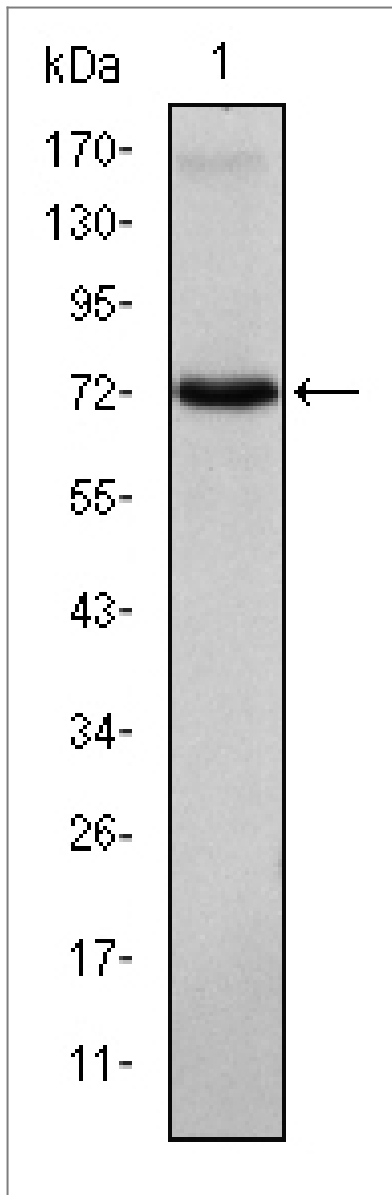
Immunogen Purified recombinant fragment of human Emt expressed in E. Coli.

Specificity Emt Monoclonal Antibody detects endogenous levels of Emt protein.

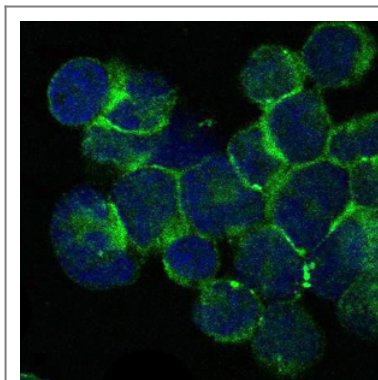
Target Information

Gene name	ITK EMT LYK		
Protein Name	Tyrosine-protein kinase ITK/TSK		
	Organism	Gene ID	UniProt ID
	Human	3702;	Q08881;
Cellular Localization	Cytoplasm . Nucleus . Localizes in the vicinity of cell surface receptors in the plasma membrane after receptor stimulation.		
Tissue specificity	T-cell lines and natural killer cell lines.		
Function	Catalytic activity:ATP + a [protein]-L-tyrosine = ADP + a [protein]-L-tyrosine phosphate.,cofactor:Binds 1 zinc ion per subunit.,Function:Plays a role in T-cell proliferation and differentiation.,induction:By interleukin-2.,similarity:Belongs to the protein kinase superfamily. Tyr protein kinase family. TEC subfamily.,similarity:Contains 1 Btk-type zinc finger.,similarity:Contains 1 PH domain.,similarity:Contains 1 protein kinase domain.,similarity:Contains 1 SH2 domain.,similarity:Contains 1 SH3 domain.,subcellular location:Localizes to cell surface receptors in the plasma membrane after stimulation with respective receptors (TCR, CD28, CD2) in T-cells.,tissue specificity:T-cell lines and natural killer cell lines.,		

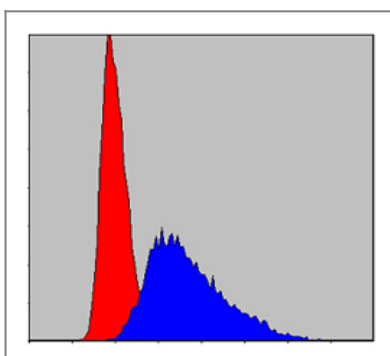
| Validation Data



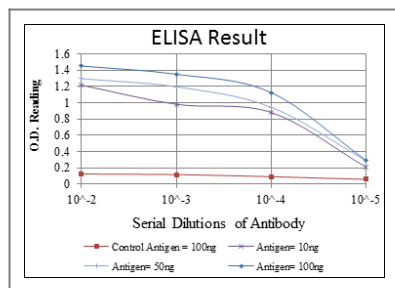
Western Blot analysis using Emt Monoclonal Antibody against Jurkat cell lysate.



Immunofluorescence analysis of Jurkat cells using Emt Monoclonal Antibody (green). Blue: DRAQ5 fluorescent DNA dye.



Flow cytometric analysis of Jurkat cells using Emt Monoclonal Antibody (blue) and negative control (red).



Contact information

Orders: order.cn@immunoway.com
 Support: support.cn@immunoway.com
 Telephone: 400-8787-807(China)
 Website: <http://www.immunoway.com.cn>
 Address: 2200 Ringwood Ave San Jose, CA 95131 USA



Please scan the QR code
 to access additional
 product information:
Emt Mouse mAb

For Research Use Only. Not for Use in Diagnostic Procedures.

[Antibody](#) | [ELISA Kits](#) | [Protein](#) | [Reagents](#)