

DDX4 Mouse mAb

CatalogNo: YM0196

| Key Features

Host Species

- Mouse

Reactivity

- Human

Applications

- WB,IHC,IF,FC,ELISA

MW

- 79kD (Calculated)

| Recommended Dilution Ratios

WB 1:500-1:2000

IHC 1:200-1:1000

IF 1:200-1:1000

Flow Cyt 1:200-1:400

ELISA 1:10000

Not yet tested in other applications.

| Storage

Storage* -15°C to -25°C/1 year(Do not lower than -25°C)

Formulation Liquid in PBS containing 50% glycerol, 0.5% BSA and 0.02% sodium azide.

| Basic Information

Clonality Monoclonal

Clone Number 12D4

| Immunogen Information

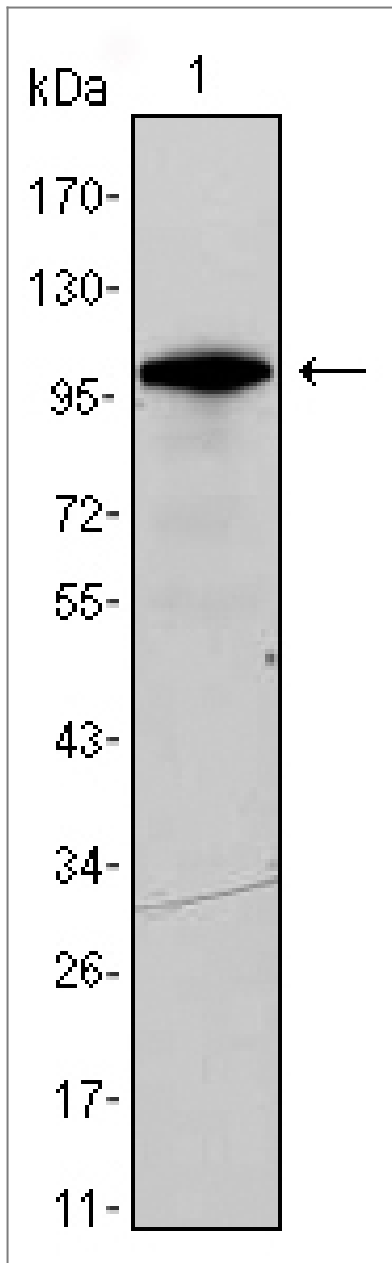
Immunogen Purified recombinant fragment of human DDX4 expressed in E. Coli

Specificity DDX4 Monoclonal Antibody detects endogenous levels of DDX4 protein.

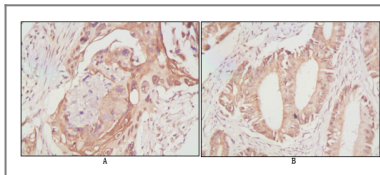
| Target Information

Gene name	DDX4		
Protein Name	Probable ATP-dependent RNA helicase DDX4		
	Organism	Gene ID	UniProt ID
	Human	54514 ;	Q9NQI0 ;
	Mouse		Q61496 ;
Cellular Localization	Cytoplasm . Cytoplasm, perinuclear region . Component of the meiotic nuage, also named P granule, a germ-cell-specific organelle required to repress transposon activity during meiosis. .		
Tissue specificity	Expressed only in ovary and testis. Expressed in migratory primordial germ cells in the region of the gonadal ridge in both sexes.		
Function	Function:May play a role in germ cell development.,similarity:Belongs to the DEAD box helicase family.,similarity:Belongs to the DEAD box helicase family. DDX4/VASA subfamily.,similarity:Contains 1 helicase ATP-binding domain.,similarity:Contains 1 helicase C-terminal domain.,subunit:N-terminus interacts with RANBP9. Interacts with PIWIL2 and MAEL.,tissue specificity:Expressed only in ovary and testis. Expressed in migratory primordial germ cells in the region of the gonadal ridge in both sexes.,		

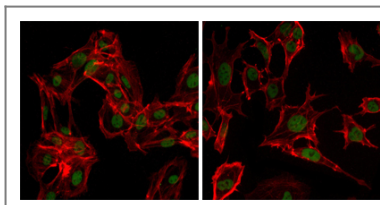
| Validation Data



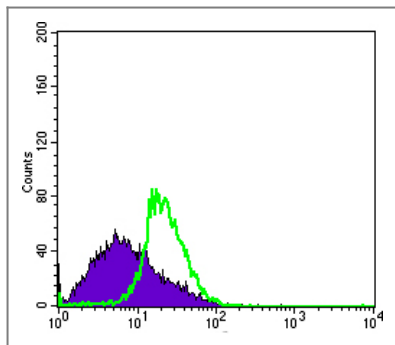
Western Blot analysis using DDX4 Monoclonal Antibody against DDX4-hIgGFc transfected HEK293 cell lysate.



Immunohistochemistry analysis of paraffin-embedded human lung cancer (A) and rectal cancer (B), showing cytoplasmic localization with DAB staining using DDX4 Monoclonal Antibody.



Immunofluorescence analysis of MSCs (left) and NTERA-2 (right) cells using DDX4 Monoclonal Antibody (green). Red: Actin filaments have been labeled with DY-554 phalloidin.



Flow cytometric analysis of MSCS cells using DDX4 Monoclonal Antibody (green) and negative control (purple).

Contact information

Orders: order.cn@immunoway.com
Support: support.cn@immunoway.com
Telephone: 400-8787-807(China)
Website: <http://www.immunoway.com.cn>
Address: 2200 Ringwood Ave San Jose, CA 95131 USA



Please scan the QR code
to access additional
product information:
DDX4 Mouse mAb

For Research Use Only. Not for Use in Diagnostic Procedures.

[Antibody](#) | [ELISA Kits](#) | [Protein](#) | [Reagents](#)