

CIB1 Mouse mAb

CatalogNo: YM0155

| Key Features

Host Species

- Mouse

Reactivity

- Human

Applications

- WB,IHC,IF,ELISA

MW

- 22kD (Calculated)

| Recommended Dilution Ratios

WB 1:500-1:2000

IHC 1:200-1:1000

ELISA 1:10000

IF 1:50-200

| Storage

Storage*

-15°C to -25°C/1 year(Do not lower than -25°C)

Formulation

Liquid in PBS containing 50% glycerol, 0.5% BSA and 0.02% sodium azide.

| Basic Information

Clonality

Monoclonal

Clone Number

1E12

| Immunogen Information

Immunogen

Purified recombinant fragment of CIB1 expressed in E. Coli.

Specificity

CIB1 Monoclonal Antibody detects endogenous levels of CIB1 protein.

| Target Information

Gene name CIB1

Protein Name Calcium and integrin-binding protein 1

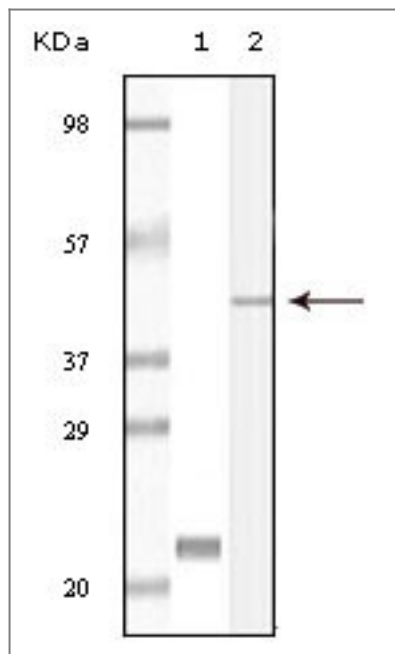
Organism	Gene ID	UniProt ID
Human	10519 ;	Q99828 ;
Mouse		Q9Z0F4 ;

Cellular Localization Membrane; Lipid-anchor. Cell membrane, sarcolemma. Cell membrane. Apical cell membrane. Cell projection, ruffle membrane. Cell projection, filopodium tip. Cell projection, growth cone . Cell projection, lamellipodium . Cytoplasm. Cytoplasm, cytoskeleton. Cytoplasm, cytoskeleton, microtubule organizing center, centrosome. Cytoplasm, perinuclear region. Nucleus . Cell projection, neuron projection . Perikaryon . Colocalized with PPP3R1 at the cell membrane of cardiomyocytes in the hypertrophic heart (By similarity). Colocalized with NBR1 to the perinuclear region. Colocalizes with TAS1R2 in apical regions of taste receptor cells. Colocalized with RAC3 in the perinuclear area and at the cell periphery. Colocalized with PAK1 within membrane ruffles during cell spreading upon readhesion to fibronectin. Redistributed to the cytoskeleton upon platelet aggregation. Translocates from the cytosol to the plasma membrane in a calcium-dependent manner. Colocalized with PLK3 at centrosomes in ductal breast carcinoma cells. .; [Isoform 2]: Cytoplasm, perinuclear region . Golgi apparatus, trans-Golgi network .

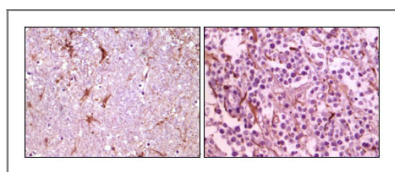
Tissue specificity Ubiquitously expressed. Expressed in the epidermis, hair follicles and keratinocytes (PubMed:30068544). Detected in platelets and in cell lines of megakaryocytic and erythrocytic lineages. Both isoform 1 and isoform 2 are detected in various cancer cell lines, with isoform 2 being the predominant form (at protein level).

Function Function:May convert the inactive conformation of integrin alpha-IIb/beta3 to an active form through the binding to the integrin cytoplasmic domain.,similarity:Contains 2 EF-hand domains.,subunit:Monomer. Interacts with the heterodimeric integrin alpha-IIb/beta3. Interacts with the protein kinases PLK2/SNK and with the region immediately upstream of the kinase domain of DNA-PK. Interacts with PSEN2. Interacts with MYO1C.,tissue specificity:Ubiquitous.,

| Validation Data



Western Blot analysis using CIB1 Monoclonal Antibody against truncated CIB1 recombinant protein (1) and A431 cell lysate (2).



Immunohistochemistry analysis of paraffin-embedded human thalamus (left) and glioma (right) tissue, showing membrane localization with DAB staining using CIB1 Monoclonal Antibody.

Contact information

Orders: order.cn@immunoway.com
 Support: support.cn@immunoway.com
 Telephone: 400-8787-807(China)
 Website: <http://www.immunoway.com.cn>
 Address: 2200 Ringwood Ave San Jose, CA 95131 USA



Please scan the QR code
to access additional
product information:
CIB1 Mouse mAb

For Research Use Only. Not for Use in Diagnostic Procedures.

[Antibody](#) | [ELISA Kits](#) | [Protein](#) | [Reagents](#)