

## CBX1 Mouse mAb

CatalogNo: YM0097

### Key Features

#### Host Species

- Mouse

#### Reactivity

- Human,Monkey

#### Applications

- WB,IF,FC,ELISA

#### MW

- 21kD (Calculated)

### Storage

**Storage\*** -15°C to -25°C/1 year (Do not lower than -25°C)

**Formulation** Liquid in PBS containing 50% glycerol, 0.5% BSA and 0.02% sodium azide.

### Recommended Dilution Ratios

**WB 1:500-1:2000**

**IF 1:200-1:1000**

**Flow Cyt 1:200-1:400**

**ELISA 1:10000**

**Not yet tested in other applications.**

### Basic Information

**Clonality** Monoclonal

**Clone Number** 2D2

### Immunogen Information

**Immunogen** Purified recombinant fragment of human CBX1 expressed in E. Coli.

**Specificity** CBX1 Monoclonal Antibody detects endogenous levels of CBX1 protein.

## Target Information

**Gene name** CBX1

**Protein Name** Chromobox protein homolog 1

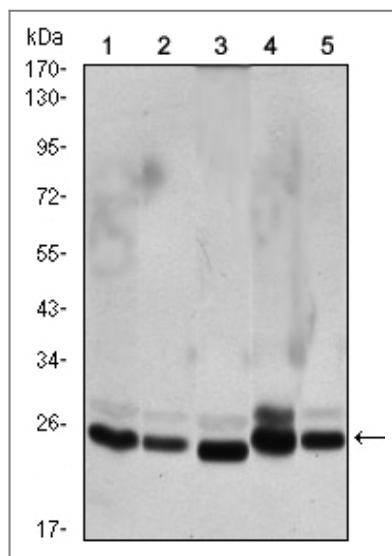
Organism	Gene ID	UniProt ID
Human	<a href="#">10951</a> ;	<a href="#">P83916</a> ;
Mouse		<a href="#">P83917</a> ;

**Cellular Localization** Nucleus . Unassociated with chromosomes during mitosis.

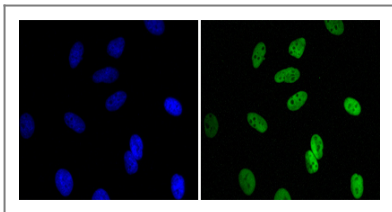
**Tissue specificity** Expressed in all adult and embryonic tissues.

**Function** Function:Component of heterochromatin. Recognizes and binds histone H3 tails methylated at 'Lys-9' , leading to epigenetic repression. Interaction with lamin B receptor (LBR) can contribute to the association of the heterochromatin with the inner nuclear membrane. ,online information:Heterochromatin protein 1 entry ,PTM:Not phosphorylated. ,similarity:Contains 2 chromo domains. ,subcellular location:Unassociated with chromosomes during mitosis. ,subunit:Homodimer. Interacts directly with CHAF1A , EMSY , LBR , TIF1/TIF1A and TRIM28/TIF1B PXVXL motif via the chromoshadow domain. Interacts directly with histone H3 methylated at 'Lys-9' via the chromo domain. Interacts with SUV39H1 and SETDB1 , SUV420H1 and SUV420H2. Interacts with PRDM6. ,tissue specificity:In all adult and embryonic tissues. ,

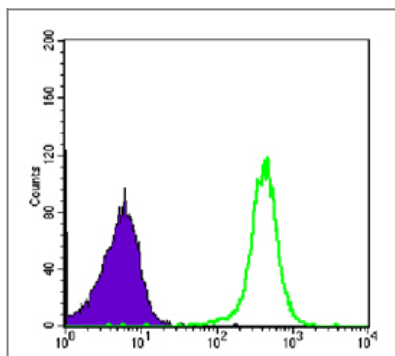
## Validation Data



Western Blot analysis using CBX1 Monoclonal Antibody against HeLa (1), COS7 (2), NIH/3T3 (3), A431 (4),and C6 (5) cell lysate.



Immunofluorescence analysis of HeLa cells using CBX1 Monoclonal Antibody (green). Blue: DRAQ5 fluorescent DNA dye.



Flow cytometric analysis of COS7 cells using CBX1 Monoclonal Antibody (green) and negative control (purple).

## Contact information

Orders: [order.cn@immunoway.com](mailto:order.cn@immunoway.com)  
Support: [support.cn@immunoway.com](mailto:support.cn@immunoway.com)  
Telephone: 400-8787-807(China)  
Website: <http://www.immunoway.com.cn>  
Address: 2200 Ringwood Ave San Jose, CA 95131 USA



Please scan the QR code to access additional product information:  
**CBX1 Mouse mAb**

For Research Use Only. Not for Use in Diagnostic Procedures.

[Antibody](#) | [ELISA Kits](#) | [Protein](#) | [Reagents](#)