

Bmx Mouse mAb

CatalogNo: YM0076

| Key Features

Host Species

- Mouse

Reactivity

- Human

Applications

- WB,ELISA

MW

- 78kD (Calculated)

| Recommended Dilution Ratios

WB 1:500-1:2000

ELISA 1:10000

Not yet tested in other applications.

| Storage

Storage* -15°C to -25°C/1 year(Do not lower than -25°C)

Formulation Liquid in PBS containing 50% glycerol, 0.5% BSA and 0.02% sodium azide.

| Basic Information

Clonality Monoclonal

| Immunogen Information

Immunogen Purified recombinant fragment of human Bmx expressed in E. Coli.

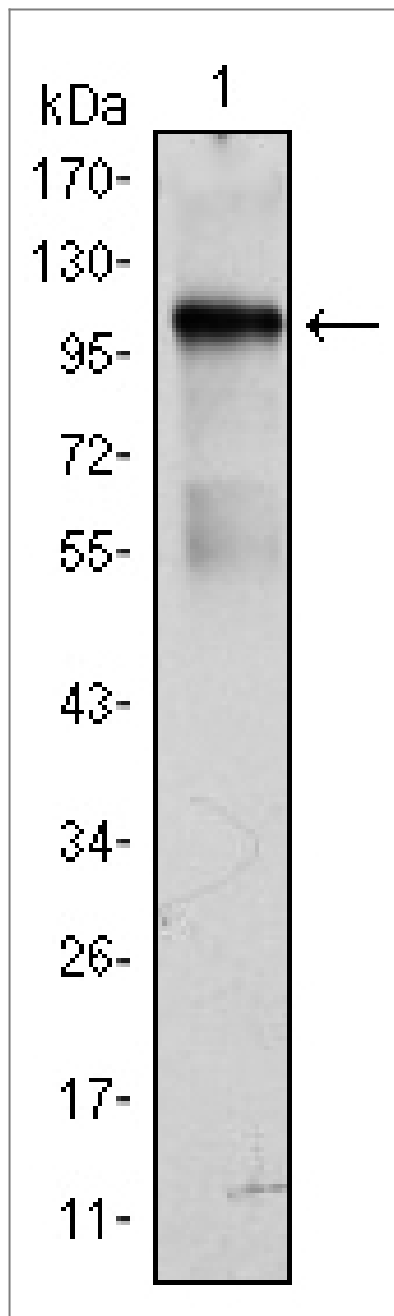
Specificity Bmx Monoclonal Antibody detects endogenous levels of Bmx protein.

| Target Information

Gene name BMX

Protein Name	Cytoplasmic tyrosine-protein kinase BMX		
	Organism	Gene ID	UniProt ID
	Human	660 ;	P51813 ;
	Mouse		P97504 ;
Cellular Localization	Cytoplasm . Localizes to the edges of spreading cells when complexed with BCAR1.		
Tissue specificity	Highly expressed in cells with great migratory potential, including endothelial cells and metastatic carcinoma cell lines.		
Function	Catalytic activity:ATP + a [protein]-L-tyrosine = ADP + a [protein]-L-tyrosine phosphate.,cofactor:Binds 1 zinc ion per subunit.,Domain:SH2 domain mediates interaction with RUFY1.,Function:Activity is required for interleukin 6 (IL-6) induced differentiation. May play a role in the growth and differentiation of hematopoietic cells. May be involved in signal transduction in endocardial and arterial endothelial cells.,induction:Activated by IL-6 through phosphatidylinositol 3-kinase (PI3-kinase) pathway. It is likely that activation occurs through binding of phosphoinositides to the PH domain.,similarity:Belongs to the protein kinase superfamily. Tyr protein kinase family. TEC subfamily.,similarity:Contains 1 Btk-type zinc finger.,similarity:Contains 1 PH domain.,similarity:Contains 1 protein kinase domain.,similarity:Contains 1 SH2 domain.,subunit:Interacts with RUFY1 and RUFY2.,tissue specificity:Preferentially expressed in epithelial and endothelial cells.,		

Validation Data



Western Blot analysis using Bmx Monoclonal Antibody against BMX-hlgGfc transfected HEK293 cell lysate.

Contact information

Orders: order.cn@immunoway.com
Support: support.cn@immunoway.com
Telephone: 400-8787-807(China)
Website: <http://www.immunoway.com.cn>
Address: 2200 Ringwood Ave San Jose, CA 95131 USA



Please scan the QR code
to access additional
product information:
Bmx Mouse mAb