

BDH1 Mouse mAb

CatalogNo: YM0059

| Key Features

Host Species

- Mouse

Reactivity

- Human, Mouse

Applications

- WB, IHC, IF, ELISA

MW

- 38kD (Calculated)

| Recommended Dilution Ratios

WB 1:500-1:2000

IHC 1:200-1:1000

ELISA 1:10000

IF 1:50-200

| Storage

Storage*

-15°C to -25°C/1 year (Do not lower than -25°C)

Formulation

Liquid in PBS containing 50% glycerol, 0.5% BSA and 0.02% sodium azide.

| Basic Information

Clonality

Monoclonal

| Immunogen Information

Immunogen

Purified recombinant fragment of human BDH1 expressed in E. Coli.

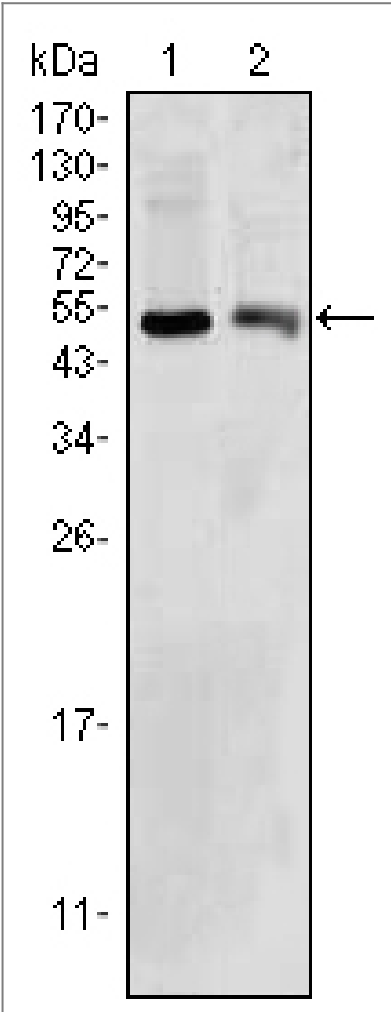
Specificity

BDH1 Monoclonal Antibody detects endogenous levels of BDH1 protein.

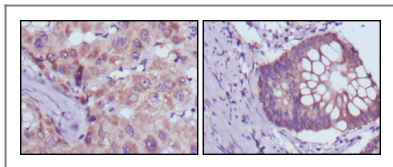
| Target Information

Gene name	BDH1		
Protein Name	D-beta-hydroxybutyrate dehydrogenase, mitochondrial		
	Organism	Gene ID	UniProt ID
	Human	622;	Q02338;
	Mouse	71911;	Q80XN0;
Cellular Localization	Mitochondrion inner membrane . Mitochondrion matrix .		
Tissue specificity	Heart,Lung,Ovary,		
Function	Catalytic activity:(R)-3-hydroxybutanoate + NAD(+) = acetoacetate + NADH.,enzyme regulation:Requires phosphatidylcholine as an allosteric activator for enzymatic activity.,similarity:Belongs to the short-chain dehydrogenases/reductases (SDR) family.,subunit:Homotetramer.,		

| Validation Data



Western Blot analysis using BDH1 Monoclonal Antibody against HepG2 (1) and NIH/3T3 (2) cell lysate.



Immunohistochemistry analysis of paraffin-embedded human liver cancer (left) and colorectal cancer tissues (right) with DAB staining using BDH1 Monoclonal Antibody.

| Contact information

Orders: order.cn@immunoway.com
Support: support.cn@immunoway.com
Telephone: 400-8787-807(China)
Website: <http://www.immunoway.com.cn>
Address: 2200 Ringwood Ave San Jose, CA 95131 USA



Please scan the QR code
to access additional
product information:
BDH1 Mouse mAb

For Research Use Only. Not for Use in Diagnostic Procedures.

[Antibody](#) | [ELISA Kits](#) | [Protein](#) | [Reagents](#)