

## SP3 (Acetyl Lys551) Rabbit pAb

CatalogNo: YK0170

### Key Features

#### Host Species

- Rabbit

#### Reactivity

- Human, Mouse

#### Applications

- WB, IHC

#### MW

- 85kD (Observed)

#### Isotype

- IgG

### Storage

**Storage\*** -15°C to -25°C/1 year (Do not lower than -25°C)

**Formulation** Liquid in PBS containing 50% glycerol, 0.5% BSA and 0.02% sodium azide.

### Recommended Dilution Ratios

**WB 1:500-2000**

**IHC 1:50-300**

### Basic Information

**Clonality** Polyclonal

### Immunogen Information

**Immunogen** Synthesized peptide derived from human Sp3 (Acetyl Lys551)

**Specificity** This antibody detects endogenous levels of Human, Mouse Sp3 (Acetyl Lys551). The name of modified sites may be influenced by many factors, such as species (the modified site was not originally found in human samples) and the change of protein sequence (the previous protein sequence is incomplete, and the protein sequence may be prolonged with the development of protein sequencing technology). When naming, we will use the "numbers" in historical reference to keep the sites consistent with the reports. The antibody binds to the following modification sequence (lowercase letters are modification sites): RIKEE

## Target Information

**Gene name** SP3

**Protein Name** Sp3 (Acetyl Lys551)

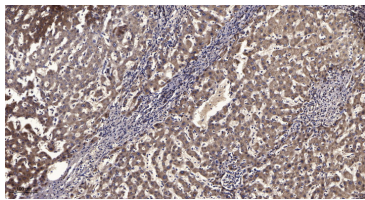
Organism	Gene ID	UniProt ID
Human	<a href="#">6670</a> ;	<a href="#">Q02447</a> ;
Mouse	<a href="#">20687</a> ;	<a href="#">O70494</a> ;

**Cellular Localization** Nucleus. Nucleus, PML body. Localizes to the nuclear periphery and in nuclear dots when sumoylated. Some localization in PML nuclear bodies.

**Tissue specificity** Ubiquitously expressed.

**Function** Function:Transcriptional factor that can act as an activator or repressor, probably in a isoform-specific manner. Binds to GT and GC boxes promoters elements.,similarity:Belongs to the Sp1 C2H2-type zinc-finger protein family.,similarity:Contains 3 C2H2-type zinc fingers.,tissue specificity:Ubiquitously expressed.,

## Validation Data



Immunohistochemical analysis of paraffin-embedded human liver cancer. 1, Antibody was diluted at 1:200(4° overnight). 2, Tris-EDTA,pH9.0 was used for antigen retrieval. 3,Secondary antibody was diluted at 1:200(room temperature, 45min).

## Contact information

Orders: [order.cn@immunoway.com](mailto:order.cn@immunoway.com)  
Support: [support.cn@immunoway.com](mailto:support.cn@immunoway.com)  
Telephone: 400-8787-807(China)  
Website: <http://www.immunoway.com.cn>  
Address: 2200 Ringwood Ave San Jose, CA 95131 USA



Please scan the QR code to access additional product information:  
**SP3 (Acetyl Lys551)**  
**Rabbit pAb**