

## MYH (pan) (Acetyl Lys505) Rabbit pAb

CatalogNo: YK0162

### Key Features

#### Host Species

- Rabbit

#### Reactivity

- Human,Mouse,Rat

#### Applications

- WB,ELISA,IHC

#### MW

- 77kD (Observed)

#### Isotype

- IgG

### Storage

**Storage\*** -15°C to -25°C/1 year(Do not lower than -25°C)

**Formulation** Liquid in PBS containing 50% glycerol, 0.5% BSA and 0.02% sodium azide.

### Recommended Dilution Ratios

**WB 1:500-2000**

**IHC 1:50-300**

**ELISA 1:2000-20000**

### Basic Information

**Clonality** Polyclonal

### Immunogen Information

**Immunogen** Synthesized peptide derived from human MYH-pan (Acetyl Lys505)

**Specificity** This antibody detects endogenous levels of Human,Mouse,Rat MYH-pan (Acetyl Lys505).The name of modified sites may be influenced by many factors, such as species (the modified site was not originally found in human samples) and the change of protein sequence (the previous protein sequence is incomplete, and the protein sequence may be prolonged with the development of protein sequencing technology). When naming, we will use the "numbers" in historical reference to keep the sites consistent with the reports. The antibody binds to the following modification sequence (lowercase letters are modification sites):EYkKE

## Target Information

**Gene name** MYH1/MYH2/MYH3/PTPRJ/MYH6/MYH7/MYH8

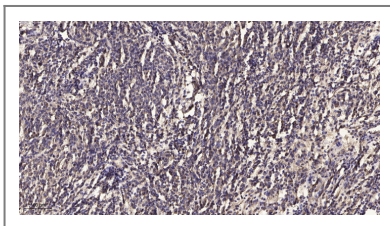
**Protein Name** MYH-pan (Acetyl Lys505)

Organism	Gene ID	UniProt ID
Human	<a href="#">4619</a> ; <a href="#">4620</a> ; <a href="#">4621</a> ; <a href="#">5795</a> ; <a href="#">4624</a> ; <a href="#">4625</a> ; <a href="#">4626</a> ;	<a href="#">P12882</a> ; <a href="#">Q9UKX2</a> ; <a href="#">P11055</a> ; <a href="#">Q9Y623</a> ; <a href="#">P13533</a> ; <a href="#">P12883</a> ; <a href="#">P13535</a> ;
Mouse	<a href="#">17879</a> ;	<a href="#">Q5SX40</a> ;
Rat	<a href="#">24583</a> ; <a href="#">360543</a> ;	<a href="#">P12847</a> ; <a href="#">Q29RW1</a> ;

**Cellular Localization** Cytoplasm, myofibril. Thick filaments of the myofibrils.

**Function** Domain:The rodlike tail sequence is highly repetitive, showing cycles of a 28-residue repeat pattern composed of 4 heptapeptides, characteristic for alpha-helical coiled coils.,Function:Muscle contraction.,miscellaneous:Each myosin heavy chain can be split into 1 light meromyosin (LMM) and 1 heavy meromyosin (HMM). It can later be split further into 2 globular subfragments (S1) and 1 rod-shaped subfragment (S2).,similarity:Contains 1 IQ domain.,similarity:Contains 1 myosin head-like domain.,subcellular location:Thick filaments of the myofibrils.,subunit:Muscle myosin is a hexameric protein that consists of 2 heavy chain subunits (MHC), 2 alkali light chain subunits (MLC) and 2 regulatory light chain subunits (MLC-2).,

## Validation Data



Immunohistochemical analysis of paraffin-embedded human meningioma. 1, Antibody was diluted at 1:200(4° overnight). 2, Tris-EDTA,pH9.0 was used for antigen retrieval. 3,Secondary antibody was diluted at 1:200(room temperature, 45min).

## Contact information

Orders: [order.cn@immunoway.com](mailto:order.cn@immunoway.com)  
Support: [support.cn@immunoway.com](mailto:support.cn@immunoway.com)  
Telephone: 400-8787-807(China)  
Website: <http://www.immunoway.com.cn>  
Address: 2200 Ringwood Ave San Jose, CA 95131 USA



Please scan the QR code to access additional product information:  
**MYH (pan) (Acetyl Lys505) Rabbit pAb**

