

KLF13 (Acetyl Lys166) Rabbit pAb

CatalogNo: YK0152

Key Features

Host Species

- Rabbit

Reactivity

- Human, Mouse

Applications

- WB, IHC

MW

- 32kD (Observed)

Isotype

- IgG

Storage

Storage* -15°C to -25°C/1 year (Do not lower than -25°C)

Formulation Liquid in PBS containing 50% glycerol, 0.5% BSA and 0.02% sodium azide.

Recommended Dilution Ratios

WB 1:500-2000

IHC 1:50-300

Basic Information

Clonality Polyclonal

Immunogen Information

Immunogen Synthesized peptide derived from human KLF13 (Acetyl Lys166)

Specificity This antibody detects endogenous levels of Human, Mouse KLF13 (Acetyl Lys166). The name of modified sites may be influenced by many factors, such as species (the modified site was not originally found in human samples) and the change of protein sequence (the previous protein sequence is incomplete, and the protein sequence may be prolonged with the development of protein sequencing technology). When naming, we will use the "numbers" in historical reference to keep the sites consistent with the reports. The antibody binds to the following modification sequence (lowercase letters are modification sites): QRKHK

Target Information

Gene name KLF13 BTEB3 NSLP1

Protein Name KLF13 (Acetyl Lys166)

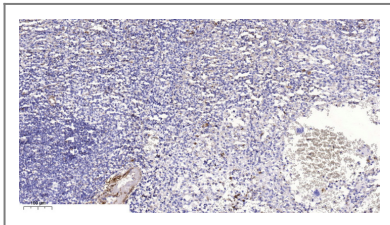
Organism	Gene ID	UniProt ID
Human	51621 ;	Q9Y2Y9 ;
Mouse	50794 ;	Q9JJZ6 ;

Cellular Localization Nucleus.

Tissue specificity Ubiquitous.

Function Domain:The Ala/Pro-rich domain may contain discrete activation and repression subdomains and also can mediate protein-protein interactions.,Function:Represses transcription by binding to the BTE site, a GC-rich DNA element, in competition with the activator SP1. It also represses transcription by interacting with the corepressor Sin3A and HDAC1. Activates RANTES expression in T-cells.,PTM:Phosphorylated.,similarity:Belongs to the Sp1 C2H2-type zinc-finger protein family.,similarity:Contains 3 C2H2-type zinc fingers.,tissue specificity:Ubiquitous.,

Validation Data



Immunohistochemical analysis of paraffin-embedded human spleen. 1, Antibody was diluted at 1:200(4° overnight). 2, Tris-EDTA,pH9.0 was used for antigen retrieval. 3,Secondary antibody was diluted at 1:200(room temperature, 45min).

Contact information

Orders: order.cn@immunoway.com
Support: support.cn@immunoway.com
Telephone: 400-8787-807(China)
Website: <http://www.immunoway.com.cn>
Address: 2200 Ringwood Ave San Jose, CA 95131 USA



Please scan the QR code to access additional product information:
KLF13 (Acetyl Lys166) Rabbit pAb