

## E2F-3 (Acetyl Lys168) Rabbit pAb

CatalogNo: YK0075

### Key Features

#### Host Species

- Rabbit

#### Reactivity

- Human:K168,Mouse:K160,Rat:K161

#### Applications

- WB,ELISA

#### MW

- 50kD (Observed)

#### Isotype

- IgG

### Storage

**Storage\*** -15°C to -25°C/1 year(Do not lower than -25°C)

**Formulation** PBS, pH 7.4, containing 0.02% sodium azide as Preservative and 50% Glycerol.

### Recommended Dilution Ratios

**WB 1:500-10000**

**ELISA 1:10000**

### Basic Information

**Clonality** Polyclonal

### Immunogen Information

**Immunogen** Synthesized acetyl-peptide from human protein at AA range: 130-200

**Specificity** This antibody detects endogenous levels of E2F-3 at Human:K168;Mouse:K160;Rat:K161, It doesn't react with total protein. The name of modified sites may be influenced by many factors, such as species (the modified site was not originally found in human samples) and the change of protein sequence (the previous protein sequence is incomplete, and the protein sequence may be prolonged with the development of protein sequencing technology). When naming, we will use the "numbers" in historical reference to keep the sites consistent with the reports. The antibody binds to the following modification sequence (lowercase letters are modification sites):SPkTP

## Target Information

**Gene name** E2F3 KIAA0075

**Protein Name** E2F transcription factor 3

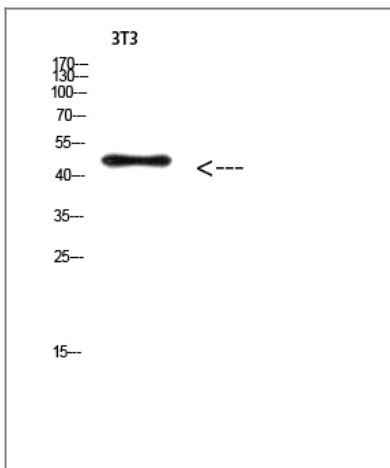
Organism	Gene ID	UniProt ID
Human	<a href="#">1871</a> ;	<a href="#">O00716</a> ;
Mouse		<a href="#">O35261</a> ;

**Cellular Localization** Nucleus.

**Tissue specificity** Bone marrow,PCR rescued clones,Placenta,Pre-B cell,Rectum tumor,Uterus,

**Function** Function:Transcription activator that binds DNA cooperatively with DP proteins through the E2 recognition site, 5'-TTTC[CG]CGC-3' found in the promoter region of a number of genes whose products are involved in cell cycle regulation or in DNA replication. The DRTF1/E2F complex functions in the control of cell-cycle progression from G1 to S phase. E2F-3 binds specifically to RB1 protein, in a cell-cycle dependent manner.,similarity:Belongs to the E2F/DP family.,subunit:Component of the DRTF1/E2F transcription factor complex. Binds cooperatively with DP-1 to E2F sites. Interacts with retinoblastoma protein RB1 and related proteins (such as RBL1) that inhibit the E2F transactivation domain. Binds EAPP.,

## Validation Data



Western Blot analysis of 3T3 cells using Antibody diluted at 500. Secondary antibody(catalog#:RS0002) was diluted at 1:20000

## Contact information

Orders: order.cn@immunoway.com  
Support: support.cn@immunoway.com  
Telephone: 400-8787-807(China)  
Website: http://www.immunoway.com.cn  
Address: 2200 Ringwood Ave San Jose, CA 95131 USA



Please scan the QR code  
to access additional  
product information:  
**E2F-3 (Acetyl  
Lys168) Rabbit pAb**

---

For Research Use Only. Not for Use in Diagnostic Procedures.

[Antibody](#) | [ELISA Kits](#) | [Protein](#) | [Reagents](#)