

## E2F-1 (Acetyl Lys120) Rabbit pAb

CatalogNo: YK0074

### Key Features

#### Host Species

- Rabbit

#### Reactivity

- Human:K120,Mouse:K115,Rat:K118

#### Applications

- WB,ELISA

#### MW

- 60kD (Observed)

#### Isotype

- IgG

### Storage

**Storage\*** -15°C to -25°C/1 year(Do not lower than -25°C)

**Formulation** PBS, pH 7.4, containing 0.02% sodium azide as Preservative and 50% Glycerol.

### Recommended Dilution Ratios

**WB 1:500-10000**

**ELISA 1:10000**

### Basic Information

**Clonality** Polyclonal

### Immunogen Information

**Immunogen** Synthesized acetyl-peptide from human protein at AA range: 100-170

**Specificity** This antibody detects endogenous levels of E2F-1 at Human:K120;Mouse:K115;Rat:K118, It doesn't react with total protein. The name of modified sites may be influenced by many factors, such as species (the modified site was not originally found in human samples) and the change of protein sequence (the previous protein sequence is incomplete, and the protein sequence may be prolonged with the development of protein sequencing technology). When naming, we will use the "numbers" in historical reference to keep the sites consistent with the reports. The antibody binds to the following modification sequence (lowercase letters are modification sites):GVkSP

## Target Information

**Gene name** E2F1 RBBP3

**Protein Name** E2F transcription factor 1

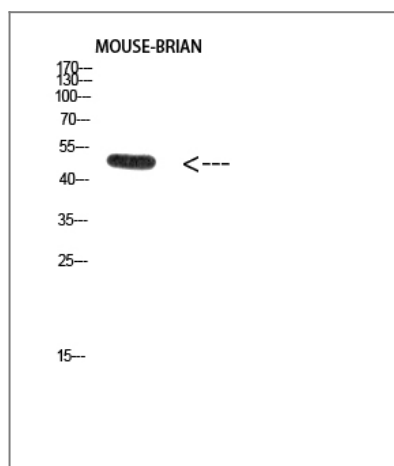
Organism	Gene ID	UniProt ID
Human	<a href="#">1869;</a>	<a href="#">Q01094;</a>
Mouse		<a href="#">Q61501;</a>
Rat		<a href="#">O09139;</a>

**Cellular Localization** Nucleus .

**Tissue specificity** Brain,Epithelium,Pancreas,Skin,

**Function** Function:Transcription activator that binds DNA cooperatively with dp proteins through the E2 recognition site, 5'-TTTC[CG]CGC-3' found in the promoter region of a number of genes whose products are involved in cell cycle regulation or in DNA replication. The DRTF1/E2F complex functions in the control of cell-cycle progression from G1 to S phase. E2F-1 binds preferentially RB1 protein, in a cell-cycle dependent manner. It can mediate both cell proliferation and p53-dependent apoptosis.,PTM:Phosphorylated by CDK2 and cyclin A-CDK2 in the S-phase.,similarity:Belongs to the E2F/DP family.,subunit:Component of the DRTF1/E2F transcription factor complex. Forms heterodimers with DP family members. The E2F-1 complex binds specifically hypophosphorylated retinoblastoma protein RB1. During the cell cycle, RB1 becomes phosphorylated in mid-to-late G1 phase, detaches from the DRTF1/E2F complex, rendering E2F transcriptionally active. Viral oncoproteins, notably E1A, T-antigen and HPV E7, are capable of sequestering RB protein, thus releasing the active complex. Interacts with TRRAP, which probably mediates its interaction with histone acetyltransferase complexes, leading to transcription activation. Binds TOPBP1 and EAPP. Interacts with ARID3A.,

## Validation Data



Western Blot analysis of MOUSE-BRIAN cells using Antibody diluted at 2000. Secondary antibody(catalog#:RS0002) was diluted at 1:20000

## | Contact information

Orders: order.cn@immunoway.com  
Support: support.cn@immunoway.com  
Telephone: 400-8787-807(China)  
Website: <http://www.immunoway.com.cn>  
Address: 2200 Ringwood Ave San Jose, CA 95131 USA



Please scan the QR code  
to access additional  
product information:  
**E2F-1 (Acetyl  
Lys120) Rabbit pAb**

---

For Research Use Only. Not for Use in Diagnostic Procedures.

[Antibody](#) | [ELISA Kits](#) | [Protein](#) | [Reagents](#)