

## NF-E4 (Acetyl Lys43) Rabbit pAb

CatalogNo: YK0049

### Key Features

#### Host Species

- Rabbit

#### Reactivity

- Human

#### Applications

- WB,ELISA,IHC

#### MW

- 19kD (Observed)

#### Isotype

- IgG

### Storage

**Storage\*** -15°C to -25°C/1 year(Do not lower than -25°C)

**Formulation** Liquid in PBS containing 50% glycerol, 0.5% BSA and 0.02% sodium azide.

### Recommended Dilution Ratios

**WB 1:500-2000**

**IHC 1:50-300**

**ELISA 1:2000-20000**

### Basic Information

**Clonality** Polyclonal

### Immunogen Information

**Immunogen** Synthesized acetyl-peptide derived from the human NF-E4 around the acetylation site of K43.

**Specificity** Acetyl-NF-E4 (K43) Polyclonal AntibodySynthesized peptide derived from the human NF-E4 around the acetylation site of K43.The name of modified sites may be influenced by many factors, such as species (the modified site was not originally found in human samples) and the change of protein sequence (the previous protein sequence is incomplete, and the protein sequence may be prolonged with the development of protein sequencing technology). When naming, we will use the "numbers" in historical reference to keep the sites consistent with the reports. The antibody binds to the following modification sequence (lowercase letters are modification sites):PRkQA

## Target Information

**Gene name** NFE4

**Protein Name** Transcription factor NF-E4

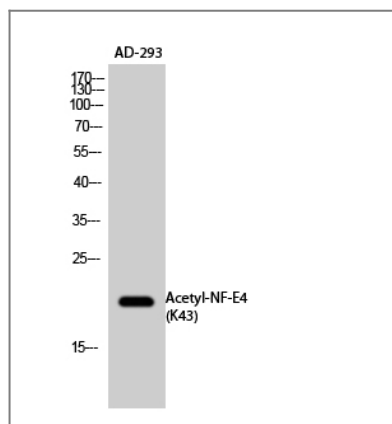
Organism	Gene ID	UniProt ID
Human	<a href="#">58160</a> ;	<a href="#">Q86UQ8</a> ;

**Cellular Localization** Nucleus .

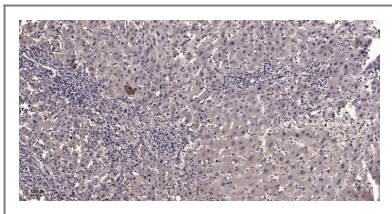
**Tissue specificity** Specifically expressed in fetal liver, cord blood and bone marrow. Also expressed in the K562 and HEL cell lines, which constitutively express the fetal globin genes.

**Function** Function:Functions as part of the SSP (stage selector protein) complex, a complex that contributes to the preferential expression of the gamma-gene in fetal erythroid cells by facilitating the interaction of the gamma-globin genes with enhancer elements contained in the locus control region (LCR). The complex binds to the stage selector element (SSE) in the proximal gamma-globin promoter. In contrast, isoform 2 acts as a repressor of gamma-globin gene expression by preventing NFE2 and RNA polymerase II recruitment to the promoter.,PTM:Acetylation at Lys-43 prolongs the protein half-life by preventing ubiquitin-mediated degradation and reduces the interaction between NF-E4 and HDAC1, potentially maximizing the activating ability of the factor at the gamma-promoter.,PTM:Ubiquitinated; leading to its degradation by the proteasome. Acetylation at Lys-43 prevents ubiquitination.,sequence Caution:Unusual initiator. The initiator methionine is coded by a non-canonical CTG leucine codon.,subunit:Component of the SSP (stage selector protein) complex, which appears to be a heteromer of TFCP2 and 2 copies of NFE4. Interacts with HDAC1 and PCAF. Isoform 2 interacts with TFCP2.,tissue specificity:Specifically expressed in fetal liver, cord blood and bone marrow. Also expressed in the K562 and HEL cell lines, which constitutively express the fetal globin genes.,

## Validation Data



Western Blot analysis of AD-293 cells using Acetyl-NF-E4 (K43) Polyclonal Antibody. Secondary antibody(catalog#:RS0002) was diluted at 1:20000



Immunohistochemical analysis of paraffin-embedded human liver cancer. 1, Antibody was diluted at 1:200(4° overnight). 2, Tris-EDTA,pH9.0 was used for antigen retrieval. 3,Secondary antibody was diluted at 1:200(room temperature, 45min).

## | Contact information

Orders: [order.cn@immunoway.com](mailto:order.cn@immunoway.com)  
Support: [support.cn@immunoway.com](mailto:support.cn@immunoway.com)  
Telephone: 400-8787-807(China)  
Website: <http://www.immunoway.com.cn>  
Address: 2200 Ringwood Ave San Jose, CA 95131 USA



Please scan the QR code to access additional product information:  
**NF-E4 (Acetyl Lys43) Rabbit pAb**

For Research Use Only. Not for Use in Diagnostic Procedures.

[Antibody](#) | [ELISA Kits](#) | [Protein](#) | [Reagents](#)